

HUNTERS[®]

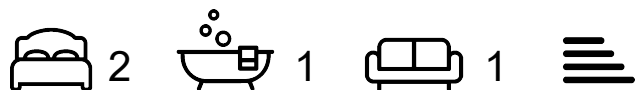
HERE TO GET *you* THERE



Clissold Crescent

Hackney, N16 9BE

£2,495 Per Month



A lovely two bedroom period conversion with the benefit a sunny roof terrace, located just moments from Stoke Newington Church Street and the nearby Newington Green Village.

The property comprises of a semi open plan kitchen and reception room which leads to a private terrace, a master bedroom, a further second double bedroom and a modern bathroom.

Clissold Road is a quiet, tree lined residential street, within very close proximity to the array of coffee shops, trendy bars and restaurants of Stoke Newington Church Street and Newington Green. Clissold Park, with it's vast green spaces is within a short walking distance.

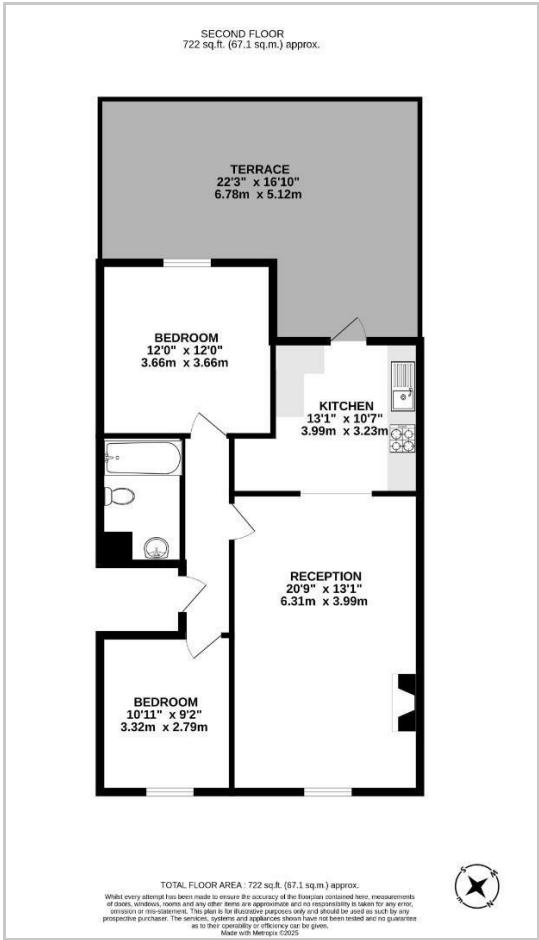
Transport links to The City and The West End are provided by numerous and frequent bus routes. Rail links are served by Canonbury Station (overground) and Dalston Kingsland & Junction (overground).



Area Map



Floor Plans



Energy Efficiency Graph



These particulars are intended to give a fair and reliable description of the property but no responsibility for any inaccuracy or error can be accepted and do not constitute an offer or contract. We have not tested any services or appliances (including central heating if fitted) referred to in these particulars and the purchasers are advised to satisfy themselves as to the working order and condition. If a property is unoccupied at any time there may be reconnection charges for any switched off/disconnected or drained services or appliances - All measurements are approximate.

THINKING OF SELLING? If you are thinking of selling your home or just curious to discover the value of your property, Hunters would be pleased to provide free, no obligation sales and marketing advice. Even if your home is outside the area covered by our local offices we can arrange a Market Appraisal through our national network of Hunters estate agents.