

# HUNTERS<sup>®</sup>

HERE TO GET *you* THERE



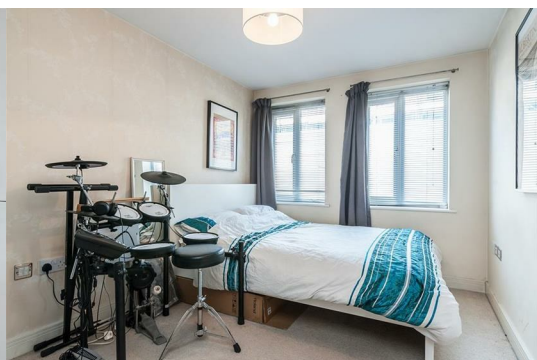
## Defoe Road

London, N16 0EG

£2,195 Per Month



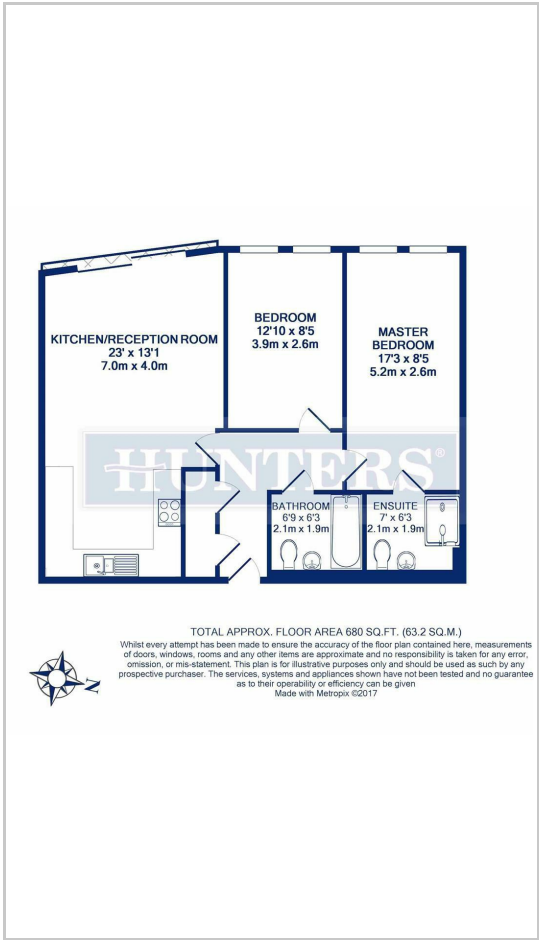
This superb two bedroom apartment is presented to the highest standards boasting high end fixtures and fitting, off street secure parking and fantastic location. The property is set over the ground floor and comprises, open plan kitchen/reception room, master bedroom with en-suite and fitted wardrobes, double guest bedroom with fitted wardrobes, modern bathroom and storage. Defoe Road is a quiet residential tree lined street situated seconds from the many shops, bars, restaurants and coffee houses of Stoke Newington Church Street. Transport links include, Stoke Newington Station (National Rail) and a variety of Bus routes in to The City and West End.



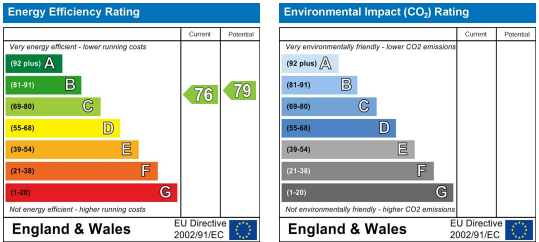
Area Map



Floor Plans



Energy Efficiency Graph



These particulars are intended to give a fair and reliable description of the property but no responsibility for any inaccuracy or error can be accepted and do not constitute an offer or contract. We have not tested any services or appliances (including central heating if fitted) referred to in these particulars and the purchasers are advised to satisfy themselves as to the working order and condition. If a property is unoccupied at any time there may be reconnection charges for any switched off/disconnected or drained services or appliances - All measurements are approximate.

**THINKING OF SELLING?** If you are thinking of selling your home or just curious to discover the value of your property, Hunters would be pleased to provide free, no obligation sales and marketing advice. Even if your home is outside the area covered by our local offices we can arrange a Market Appraisal through our national network of Hunters estate agents.