

HUNTERS[®]

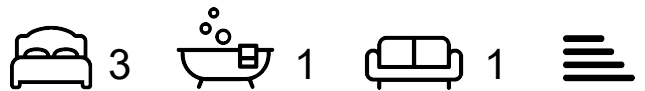
HERE TO GET *you* THERE



Stoke Newington Church Street

London, N16 9JH

£3,395 Per Month



Newly refurbished This large three bedroom maisonette enjoys a central location overlooking Clissold Park. Boasting over 1000sq ft, The property comprises exceptionally bright reception room, modern kitchen, master bedroom, two further double bedrooms, bathroom and ample storage.

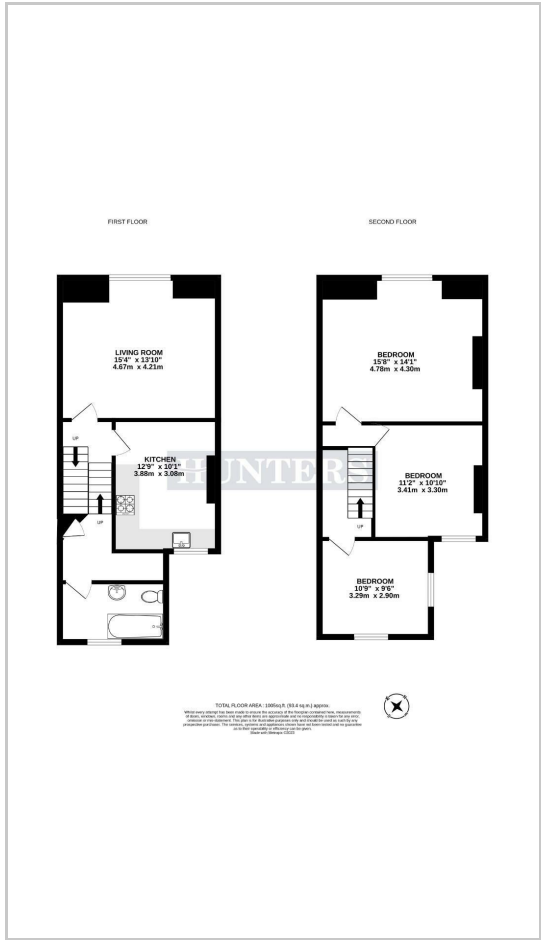
Stoke Newington Church Street has wide range of bars, restaurants and coffee houses and moments from trendy Newington Green and Dalston. Transport links include, Canonbury Station (National Rail), Dalston Kingsland Station (Overground and East London Line) and a variety of bus routes into The City and West End are also available.



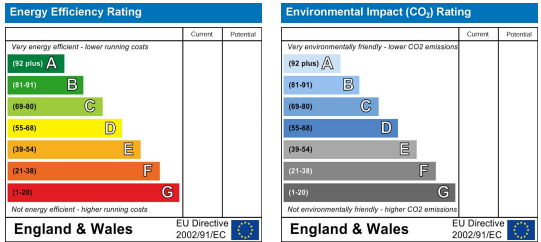
Area Map



Floor Plans



Energy Efficiency Graph



These particulars are intended to give a fair and reliable description of the property but no responsibility for any inaccuracy or error can be accepted and do not constitute an offer or contract. We have not tested any services or appliances (including central heating if fitted) referred to in these particulars and the purchasers are advised to satisfy themselves as to the working order and condition. If a property is unoccupied at any time there may be reconnection charges for any switched off/disconnected or drained services or appliances - All measurements are approximate. **THINKING OF SELLING?** If you are thinking of selling your home or just curious to discover the value of your property, Hunters would be pleased to provide free, no obligation sales and marketing advice. Even if your home is outside the area covered by our local offices we can arrange a Market Appraisal through our national network of Hunters estate agents.