

HUNTERS®

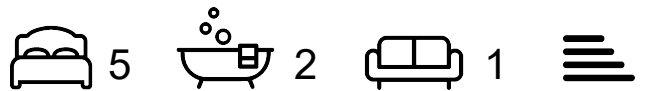
HERE TO GET *you* THERE



Osidge Lane

London, N14 5JG

£3,500 Per Month



*** ALL BILLS INCLUDED ***

Rarely available to the market is this imposing end of terrace house offering almost 2000 sq. ft. of internal accommodation. The property is located just minutes walk away from the stunning Brunswick Park in Southgate.

Available to view by appointment only, the property is arranged on three levels. It consists of a large reception/kitchen/diner leading to a private garden, four double bedrooms, an additional smaller bedroom that can be used as a study, two bathrooms, a separate W/C and off street parking.

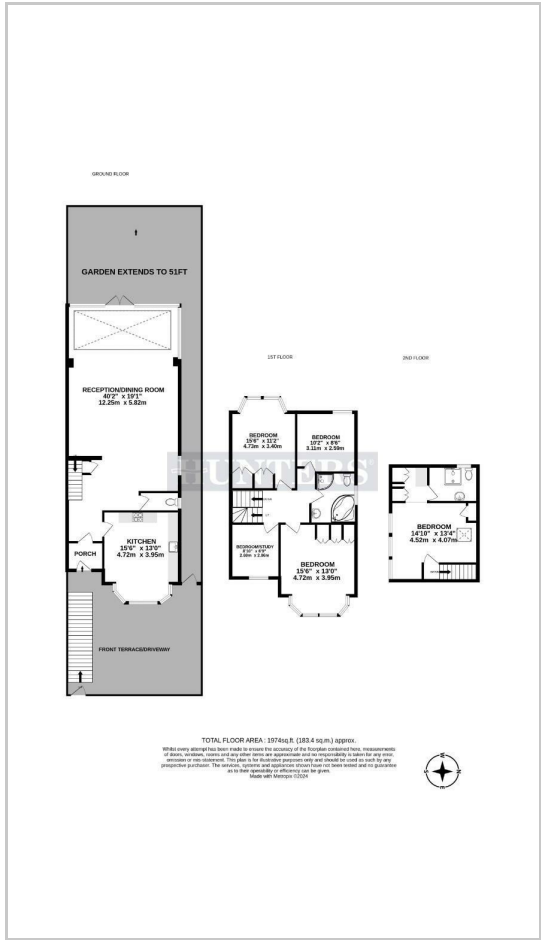
The property is within walking distance to Southgate and a variety of Bus routes into The City & West End.



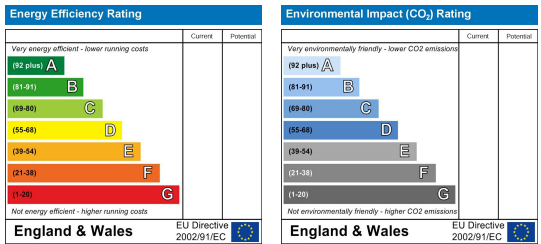
Area Map



Floor Plans



Energy Efficiency Graph



These particulars are intended to give a fair and reliable description of the property but no responsibility for any inaccuracy or error can be accepted and do not constitute an offer or contract. We have not tested any services or appliances (including central heating if fitted) referred to in these particulars and the purchasers are advised to satisfy themselves as to the working order and condition. If a property is unoccupied at any time there may be reconnection charges for any switched off/disconnected or drained services or appliances - All measurements are approximate. **THINKING OF SELLING?** If you are thinking of selling your home or just curious to discover the value of your property, Hunters would be pleased to provide free, no obligation sales and marketing advice. Even if your home is outside the area covered by our local offices we can arrange a Market Appraisal through our national network of Hunters estate agents.