



Globe Street, Thetford, Norfolk, IP26 4PQ

£190,000

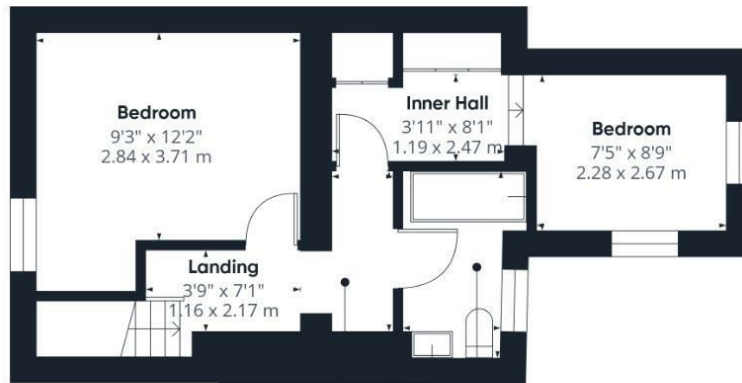
A beautiful mid-terraced two bedroom cottage situated within a non-estate position close to the centre of this popular Norfolk village. Having been greatly improved by the current owners the property is well presented throughout and enjoys modern kitchen and bathroom and sealed unit double glazing.

- MID TERRACED COTTAGE
- DINING ROOM
- TWO BEDROOMS
- SEALED UNIT DOUBLE GLAZING
- OFF ROAD PARKING TO REAR
- LOUNGE
- MODERN KITCHEN
- OIL FIRED HEATING
- COURTYARD GARDEN PLUS ADDITIONAL GARDEN
- VIEWING RECOMMENDED





Ground Floor



Floor 1

Approximate total area⁽¹⁾
721 ft²
66.8 m²

(1) Excluding balconies and terraces

Calculations reference the RICS IPMS 3C standard. Measurements are approximate and not to scale. This floor plan is intended for illustration only.

GIRAFFE360

