



## Malsters Close, Thetford, Norfolk, IP26 5HJ

**Rent - £1,000 PCM      Deposit - £1,153**

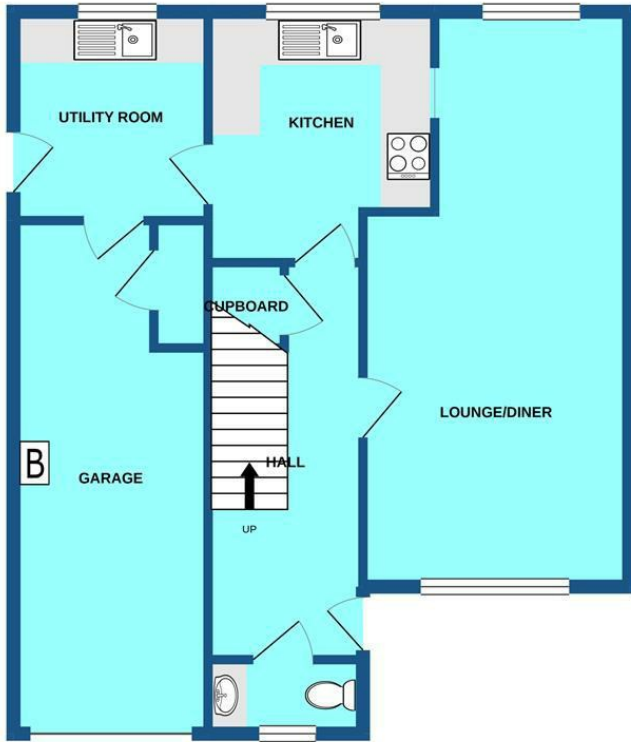
Modern semi-detached three bedroom home is immediately available to rent, offers an excellent opportunity to applicants seeking a home in such a popular village. Viewing highly recommended. Available Now!

- WELL PRESENTED SEMI-DETACHED HOUSE
- SPACIOUS LOUNGE/DINER
- BATHROOM PLUS CLOAKROOM
- GARAGE
- VIEWINGS RECOMMENDED
- 3 BEDROOMS
- POPULAR VILLAGE
- RECENTLY INSTALLED GAS BOILER
- DRIVEWAY
- AVAILABLE NOW

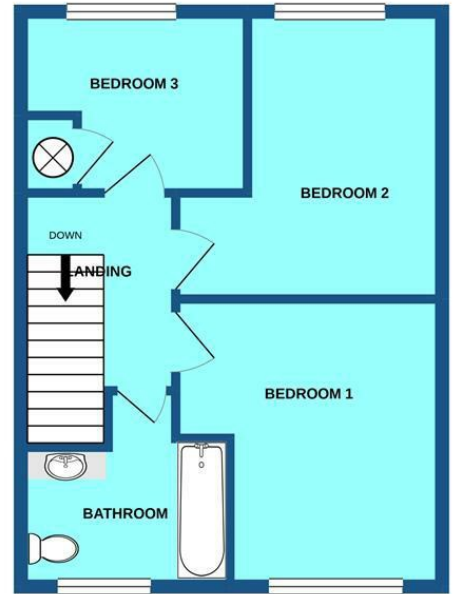




GROUND FLOOR  
706 sq.ft. (65.6 sq.m.) approx.



1ST FLOOR  
422 sq.ft. (39.2 sq.m.) approx.



TOTAL FLOOR AREA : 1127 sq.ft. (104.7 sq.m.) approx.

Whilst every attempt has been made to ensure the accuracy of the floorplan contained here, measurements of doors, windows, rooms and any other items are approximate and no responsibility is taken for any error, omission or mis-statement. This plan is for illustrative purposes only and should be used as such by any prospective purchaser. The services, systems and appliances shown have not been tested and no guarantee as to their operability or efficiency can be given.  
Made with Metropix ©2021

