



Gorse Close, Brandon, IP27 9DE

Rent - £950 PCM

Deposit - £1,096

Nestled in the charming area of Gorse Close, Lakenheath, this delightful end-terrace bungalow offers a perfect blend of comfort and modern living. The property boasts a contemporary kitchen that is well-equipped for all your culinary needs, making it an ideal space for both cooking and entertaining.

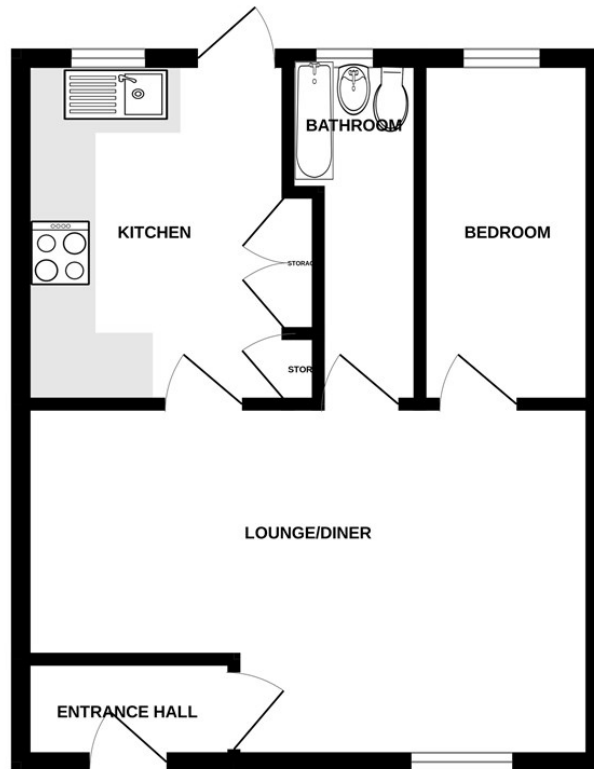
The spacious lounge/diner provides a welcoming atmosphere, perfect for relaxation or hosting friends and family. With one generously sized bedroom, this bungalow is well-suited for individuals or couples seeking a tranquil retreat. The modern electric heating ensures a warm and cosy environment throughout the year.

- ENTRANCE LOBBY
- MODERN KITCHEN
- BATHROOM
- FRONT AND REAR GARDEN
- LOUNGE/DINER
- BEDROOM
- ALLOCATED PARKING
- VIEWING RECOMMENDED.



Council Tax Band: A - EPC Rating: E 47

GROUND FLOOR



Whilst every attempt has been made to ensure the accuracy of the floorplan contained here, measurements of doors, windows, rooms and any other items are approximate and no responsibility is taken for any error, omission or mis-statement. This plan is for illustrative purposes only and should be used as such by any prospective purchaser. The services, systems and appliances shown have not been tested and no guarantee as to their operability or efficiency can be given.
Made with Metroplan C5025

