





Room, 16a Alfreton Road, Arboretum, Nottingham, NG7 3NG

£125 Per Week

- Available Academic Year 2024/25
- inc gas, electric, water, internet, TV license and TV package subject to a fair usage policy
- 5 minute walk to NTU City Campus
- Available from 1st August 2024
- Council Tax Band A
- £125 pppw for a standard room or £135pppw for a studio
- Duplex apartment
- Rent due in instalments
- 48 week tenancy
- EPC C

20 Regent Street, Nottingham, Nottinghamshire, NG1 5BQ

students@tassisalettings.co.uk

www.tassisalettings.co.uk



Directions

Above the running horse pub - accessed via black door on Cromwell st few limited time parking spaces on Cromwell St - no parking for tenants - cant obtain a parking permit as classed as Alfreton Road and not Cromwell St

Viewings

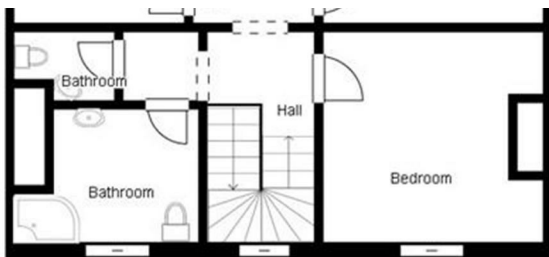
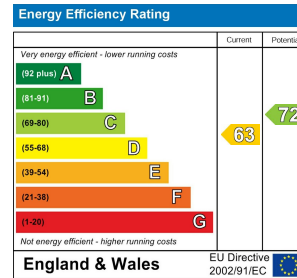
Viewings by arrangement only. Call to make an appointment.

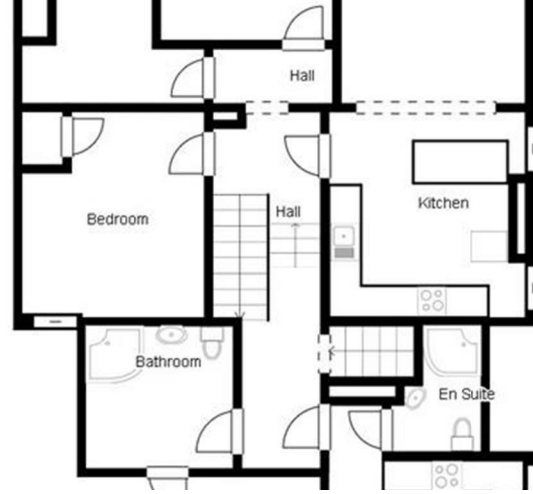
Council Tax Band:

A

EPC Rating:

D





20 Regent Street, Nottingham, Nottinghamshire, NG1 5BQ

students@tassisalettings.co.uk
www.tassisalettings.co.uk