



Woodstock

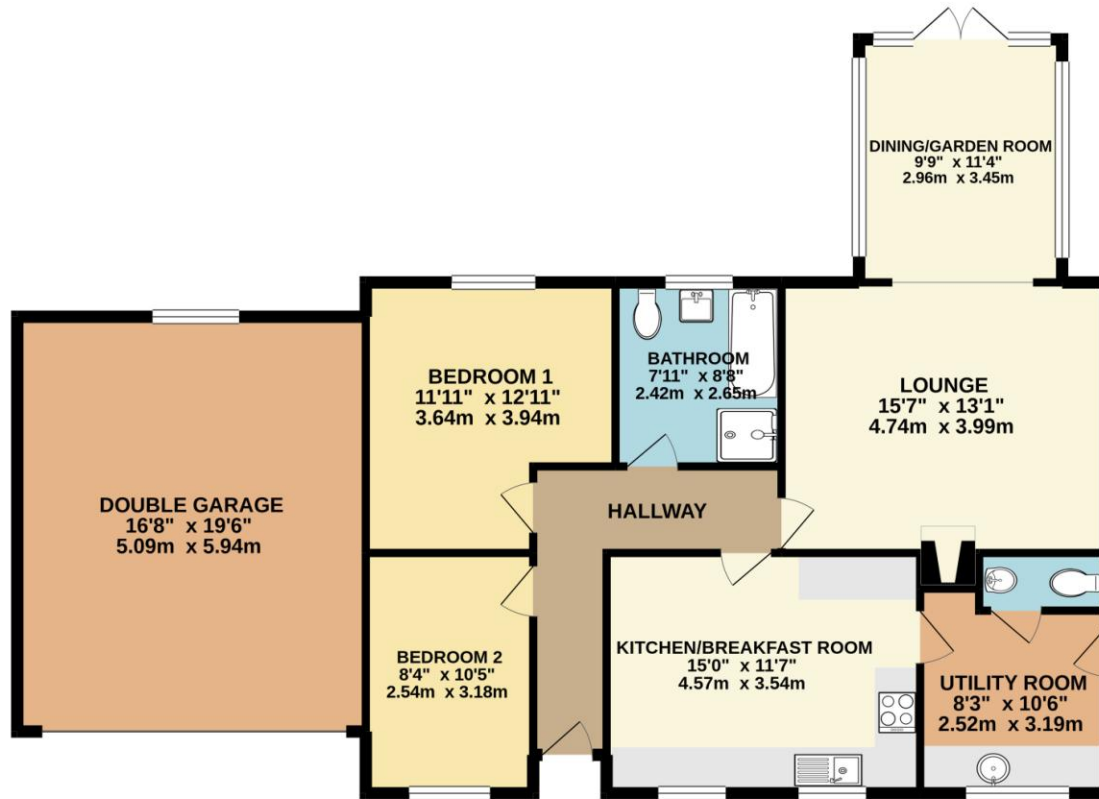
Dereham Road, Westfield, Dereham  
NR19 1QG

£425,000

This elegant abode could be your new escape from the modern world! This wonderful two bed detached bungalow commands a semi-rural location with a double garage. Luxury touches such as the open plan lounge/garden room, kitchen and modern bathroom enhance this featured studded home! Don't miss out!



**GROUND FLOOR**  
1294 sq.ft. (120.2 sq.m.) approx.



TOTAL FLOOR AREA: 1294 sq.ft. (120.2 sq.m.) approx.  
Whilst every attempt has been made to ensure the accuracy of the floorplan contained here, measurements of doors, windows, rooms and any other items are approximate and no responsibility is taken for any error, omission or mis-statement. This plan is for illustrative purposes only and should be used as such by any prospective purchaser. The services, systems and appliances shown have not been tested and no guarantee as to their operability or efficiency can be given.  
Made with Metropix ©2021



Energy Efficiency Rating		Current	Potential
Very energy efficient - lower running costs			
(92-100)	<b>A</b>		
(81-91)	<b>B</b>		
(69-80)	<b>C</b>		77
(55-68)	<b>D</b>		
(39-54)	<b>E</b>	41	
(21-38)	<b>F</b>		
(1-20)	<b>G</b>		
Not energy efficient - higher running costs			
England, Scotland & Wales		EU Directive 2002/91/EC	

01362 694 800

[www.attikestateagents.co.uk](http://www.attikestateagents.co.uk)

[enquiries@attikestateagents.co.uk](mailto:enquiries@attikestateagents.co.uk)

**Agents Note:** Whilst every care has been taken to prepare these sales particulars, they are for guidance purposes only. All measurements are approximate and for general guidance purposes only and whilst every care has been taken to ensure their accuracy, they should not be relied upon and potential buyers are advised to recheck the measurements