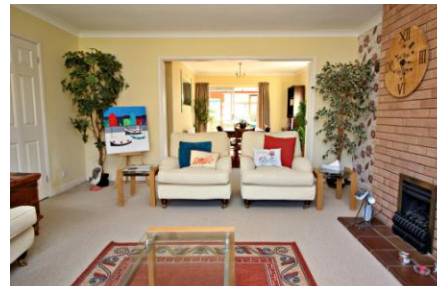


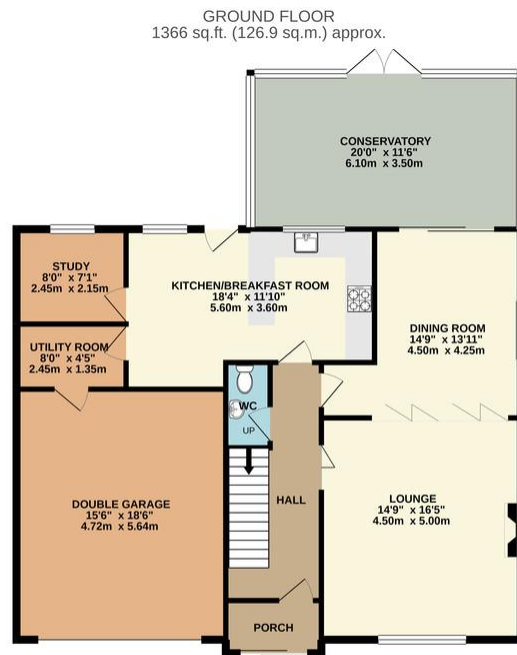


17 Beechbank Drive, Thorpe End, Norwich, NR13 5BW

****VENDORS HAVE FOUND* *GUIDE PRICE £425,000-
£450,000****

ATTIK are delighted to present this very spacious, detached, four double bedroom house situated on a corner plot in an attractive, individually designed cul-de-sac in the sought after Norwich Garden Village of Thorpe End. Comprising a lovely open plan living/dining area, large conservatory, kitchen/breakfast room, study, four good sized double bedrooms with ensuite bathroom to master, enclosed rear garden, double garage and ample driveway parking, this is the perfect family home. Call the team now to avoid disappointment.

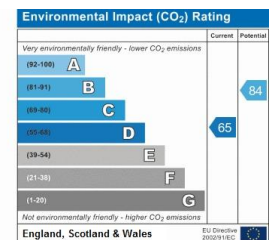
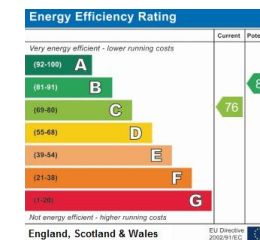




TOTAL FLOOR AREA : 2229 sq.ft. (207.1 sq.m.) approx.

Whilst every attempt has been made to ensure the accuracy of the floorplan contained here, measurements of doors, windows, rooms and any other items are approximate and no responsibility is taken for any error, omission or mis-statement. This plan is for illustrative purposes only and should be used as such by any prospective purchaser. The services, systems and appliances shown have not been tested and no guarantee as to their operability or efficiency can be given.

Made with Metropix ©2020



01362 694 800

www.attikestateagents.co.uk

enquiries@attikestateagents.co.uk

Agents Note: Whilst every care has been taken to prepare these sales particulars, they are for guidance purposes only. All measurements are approximate and for general guidance purposes only and whilst every care has been taken to ensure their accuracy, they should not be relied upon and potential buyers are advised to recheck the measurements.