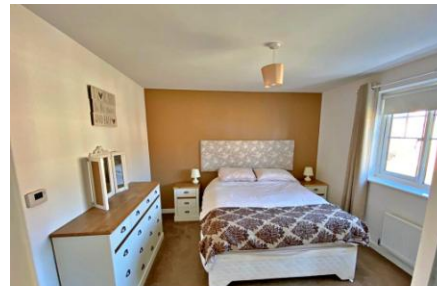




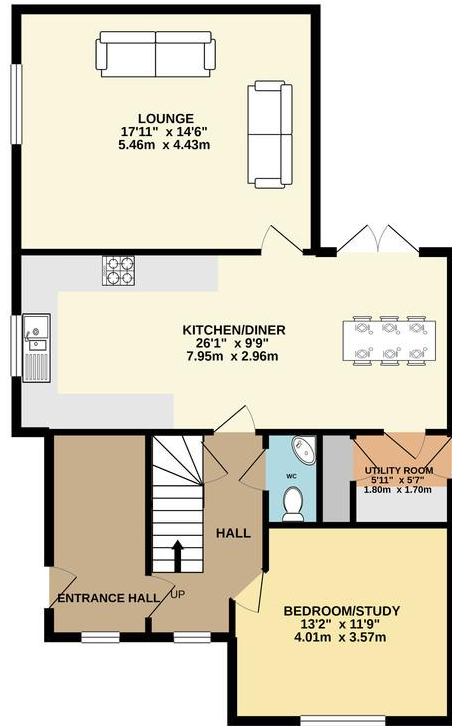
17 Reeve Way, Wymondham, NR18
0GL

£400,000

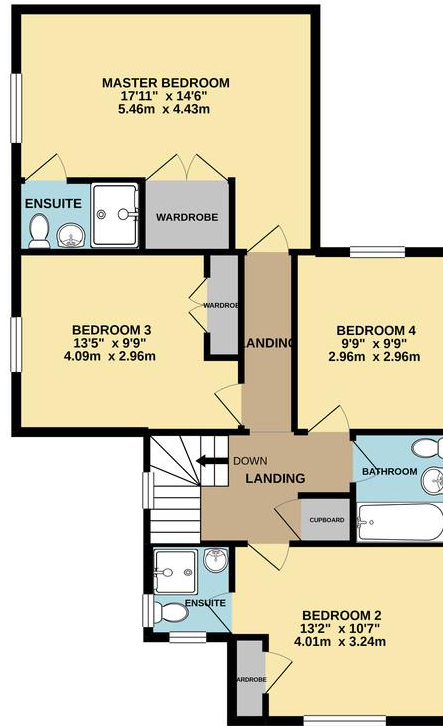
****GUIDE PRICE £400000 - £425000**** ATTIK are delighted to bring to the market this immaculate and spacious, extended detached five bedroom house on the outskirts of Wymondham. Featuring a stunning kitchen/diner, two en-suites, Nest Security and Heating System, garage and ample off road parking we are sure this will be a popular property.



GROUND FLOOR
904 sq.ft. (84.0 sq.m.) approx.

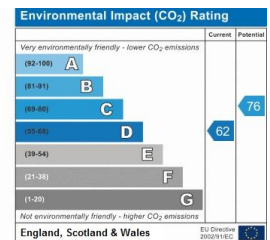
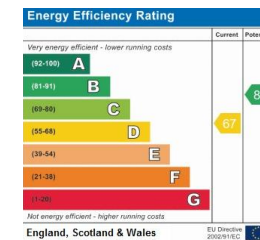


1ST FLOOR
831 sq.ft. (77.2 sq.m.) approx.



TOTAL FLOOR AREA: 1734 sq.ft. (161.1 sq.m.) approx.

Whilst every attempt has been made to ensure the accuracy of the floorplan contained here, measurements of doors, windows, rooms and any other items are approximate and no responsibility is taken for any error, omission or mis-statement. This plan is for illustrative purposes only and should be used as such by any prospective purchaser. The services, systems and appliances shown have not been tested and no guarantee as to their operability or efficiency can be given.
Made with Metropix ©2020



01362 694 800

www.attikestateagents.co.uk

enquiries@attikestateagents.co.uk

Agents Note: Whilst every care has been taken to prepare these sales particulars, they are for guidance purposes only. All measurements are approximate and for general guidance purposes only and whilst every care has been taken to ensure their accuracy, they should not be relied upon and potential buyers are advised to recheck the measurements