



TK International  
020 7794 8700  
www.t-k.co.uk

Residential Sales  
Residential Lettings  
Property Management

Sales Office:  
9 Heath Street  
Hampstead  
London NW3 6TP  
E: sales@t-k.co.uk

Lettings Office:  
16-18 Heath Street  
Hampstead  
London NW3 6TE  
E: lettings@t-k.co.uk

tk.international  
@tk\_int  
TK International  
TK International



## **St. John's Wood Park St. John's Wood NW8**

A recently refurbished three bedroom apartment on the fourth floor of this purpose built block. The property benefits from a bright and spacious reception room with an open plan kitchen, two en suite bedrooms, a further bedroom and separate shower room.

The apartment is conveniently positioned for the amenities of Swiss Cottage as well as St John's Wood (Jubilee and Metropolitan Lines).

EPC Rating: D

\*Tenant Fees Apply\* please see the Tenant Costs Guide on our website:  
<http://www.t-k.co.uk/rent/tenants-charges>

**£1,100 Per Week**





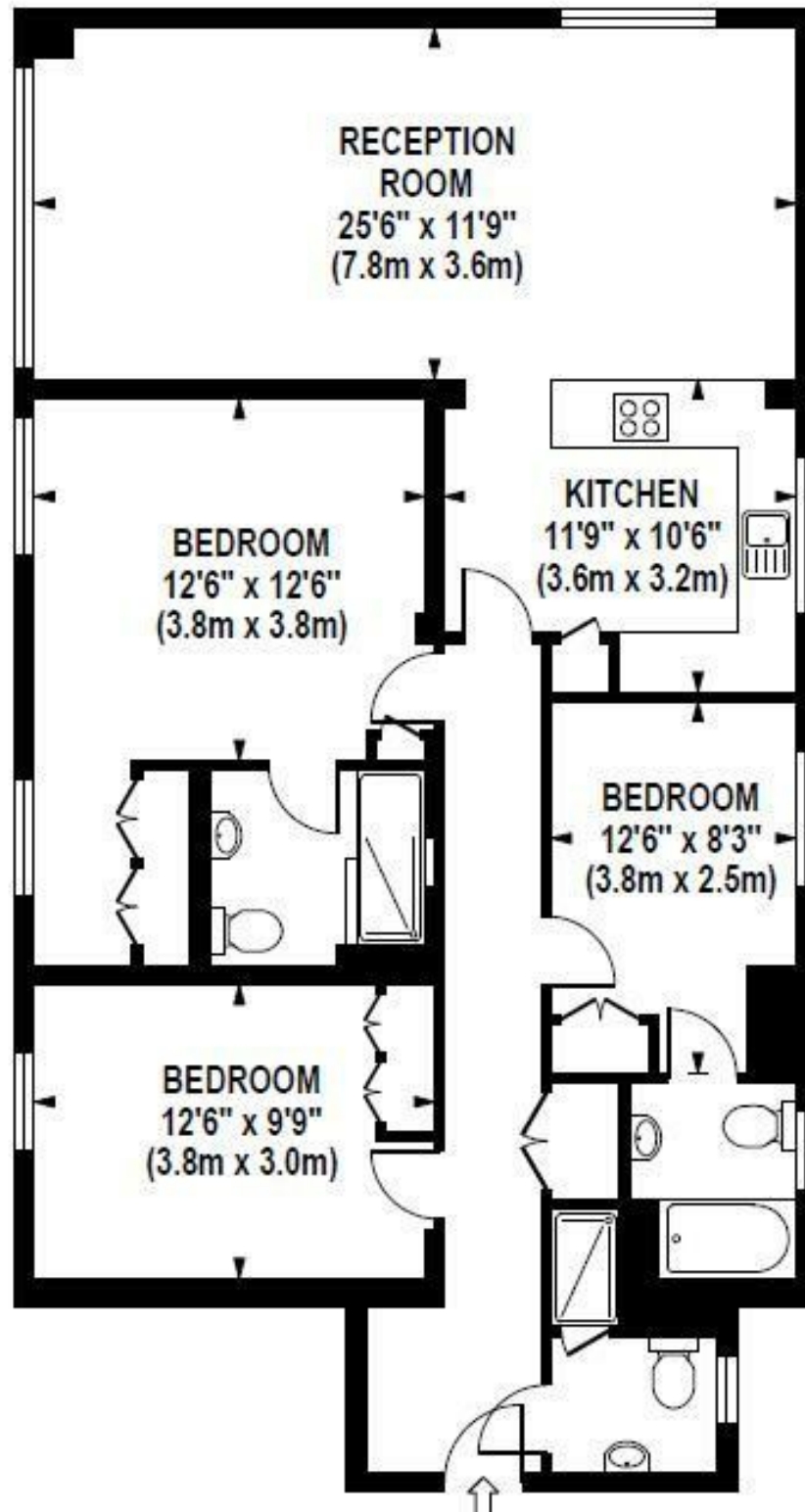






# BOYDELL COURT

Approximate Gross Internal Area 1150 sq ft / 106.8 sq m



**FOURTH FLOOR  
GROSS INTERNAL  
FLOOR AREA 1150 SQ FT**

Although every attempt has been made to ensure accuracy, all measurements are approximate. The floor plan's for illustrative purposes only and not to scale. Measured in accordance to RICS standards.