



TK International
020 7794 8700
www.t-k.co.uk

Residential Sales
Residential Lettings
Property Management

Sales Office:
9 Heath Street
Hampstead
London NW3 6TP
E: sales@t-k.co.uk

Lettings Office:
16-18 Heath Street
Hampstead
London NW3 6TE
E: lettings@t-k.co.uk

tk.international
TK International
TK International

Est.
1998



Finchley Road London NW8

A 2-bedroom, 2-bathroom apartment on the 5th floor of a conveniently located portered building, directly opposite St John's Wood Underground Station (Jubilee Line) and moments from the shops on the High Street. The apartment features a double reception room, a spacious kitchen/breakfast room, a double bedroom, a single bedroom, and two bathrooms (one en-suite). Additional benefits include a lift, porter service, and heating and hot water included in the rent.

£3,500 Per Month

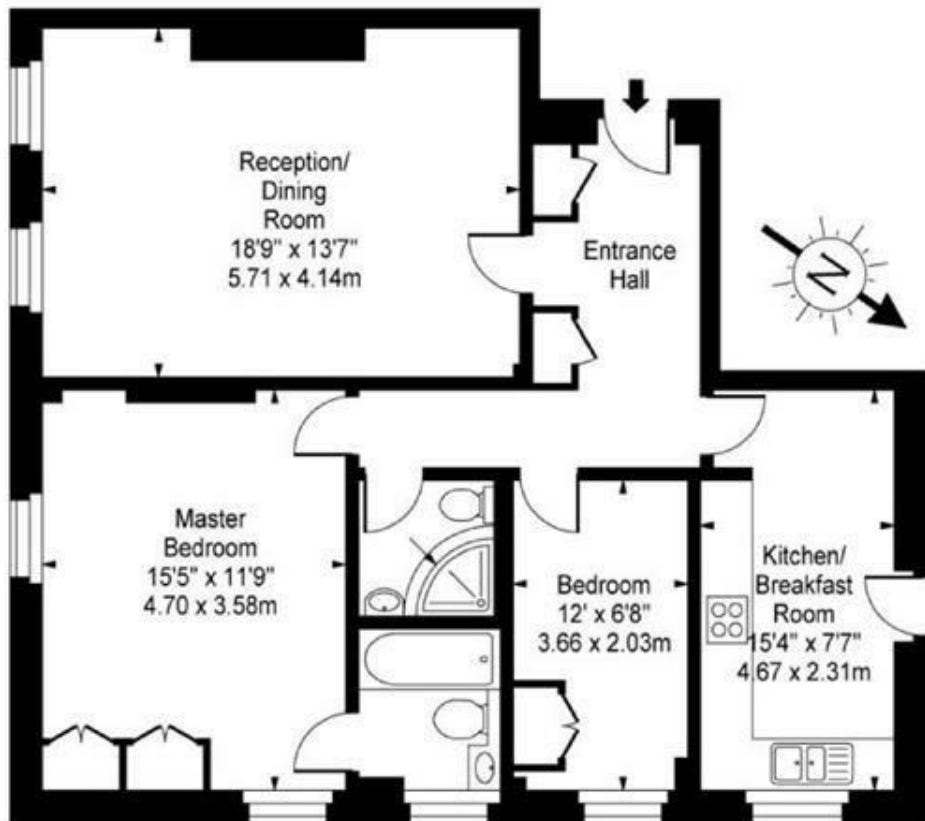
SOLE AGENT







**Eyre Court,
Finchley Road, NW8**



Fifth Floor

Approx Gross Internal Area 842 Sq Ft - 78.22 Sq M

For Illustration Purposes Only - Not To Scale Floor Plan by www.nogaphotostudio.com Ref: No.26143

This floor plan should be used as a general outline for guidance only. Any intending purchaser or lessee should satisfy themselves by inspection, searches, enquiries and full survey as to the correctness of each statement. Any areas, measurements or distances quoted are approximate and should not be used to value a property or be the basis of any sale or let.