



TK International
020 7794 8700
www.t-k.co.uk

Residential Sales
Residential Lettings
Property Management

Sales Office:
9 Heath Street
Hampstead
London NW3 6TP
E: sales@t-k.co.uk

Lettings Office:
16-18 Heath Street
Hampstead
London NW3 6TE
E: lettings@t-k.co.uk

tk.international
TK International
TK International

Est.
1998



Corringham Road Golders Green NW11

A delightful and well presented semi-detached four bedroom family house, situated in this attractive sought after road in Golders Green, just bordering Hampstead Garden Suburb and a short walk to the Heath Extension.

The accommodation enjoys 2,913sqft / 271sqm (gross) over three floors with the ground floor boasting a 23' reception room open to a 22' dining room, large kitchen/breakfast room, separate bay fronted family room and guest WC.

The first floor provides a three double bedrooms and two bathrooms (one en-suite) with the principal bedroom suite comprising bathroom & dressing room on the second floor together with plenty of loft storage.

This wonderful home also offers a beautiful 73' rear garden and off street parking for two cars.

Ideally situated within a short walk of Golders Green underground station (Northern Line), the bus terminal and the wide choice of local shops, cafes and restaurants.

£2,450,000

SOLE AGENT

Freehold

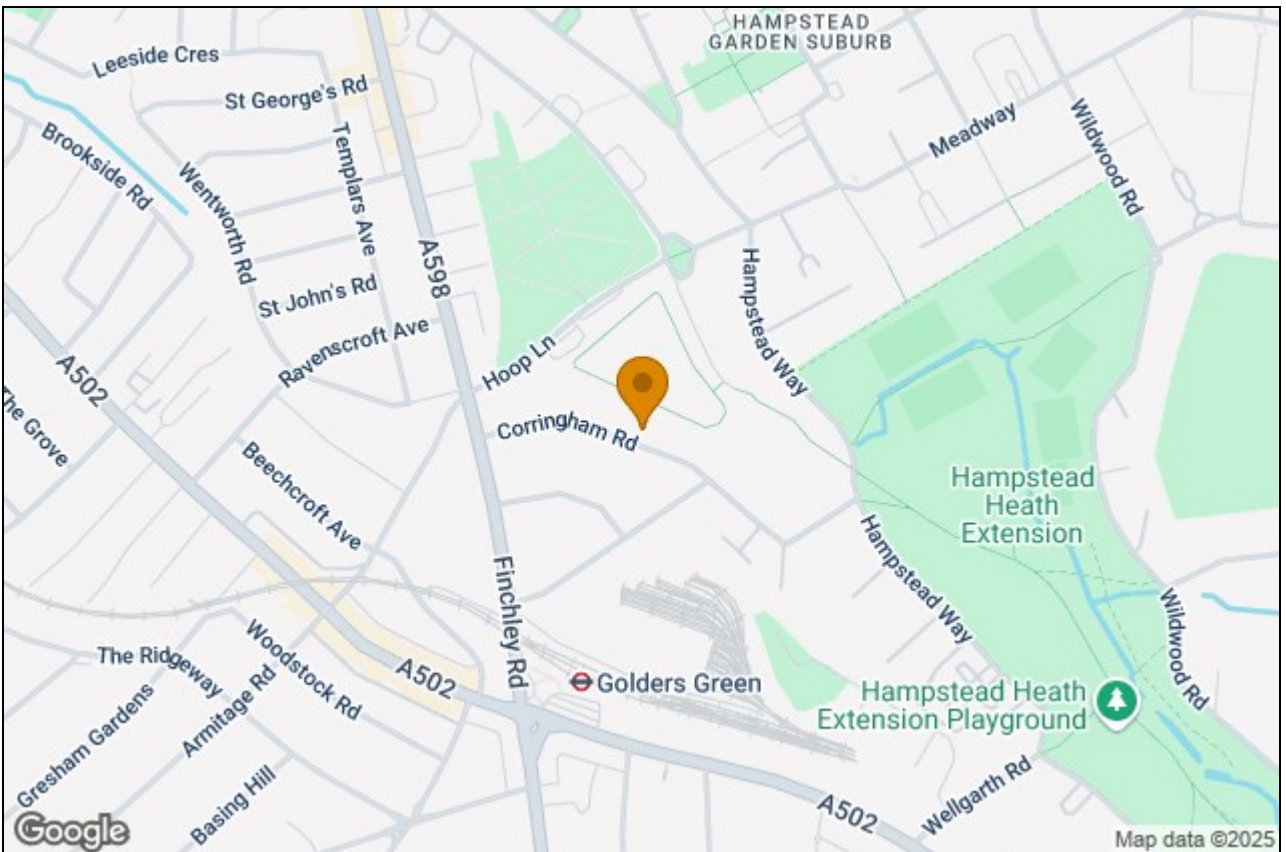














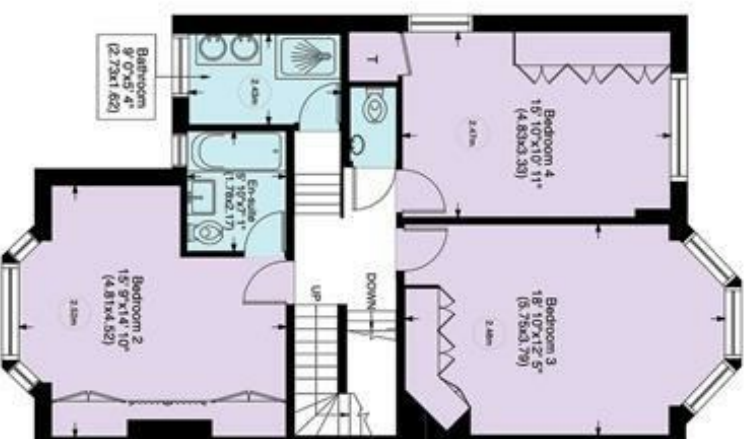
Corringham Road NW11

Gross internal area (approx.)

271 Sq m (2913 Sq ft) Including under 1.5m

259 Sq m (2785 Sq ft) Excluding under 1.5m

For Identification only, Not to Scale



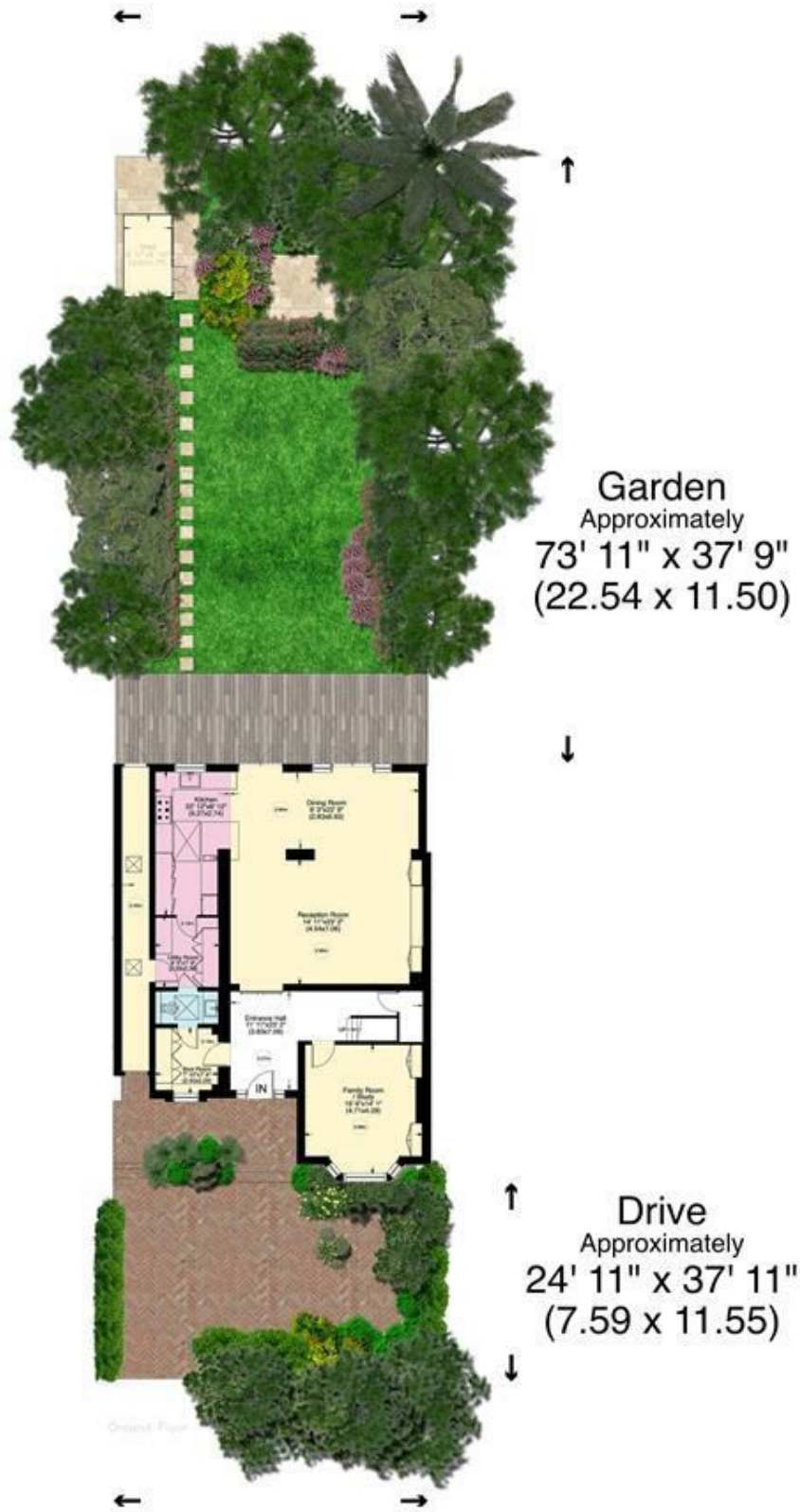
Not to Scale, for guidance only and must not be relied upon as a statement to fact. All measurements areas are approximate only (and have been prepared in accordance with the current edition of the RICS Code of Measuring Practice).

www.WilliamSalisburyPhotography

Corringham Road NW11

Acre 0.13 (approx.)

For identification only, Not to Scale



www.WilliamSalisbury.Photography

Not to Scale, for guidance only and must not be relied upon as a statement to fact. All measurements areas are approximate only (and have been prepared in accordance with the current edition of the RICS Code of Measuring Practice).