



TK International  
020 7794 8700  
www.t-k.co.uk

Residential Sales  
Residential Lettings  
Property Management

Sales Office:  
9 Heath Street  
Hampstead  
London NW3 6TP  
E: sales@t-k.co.uk

Lettings Office:  
16-18 Heath Street  
Hampstead  
London NW3 6TE  
E: lettings@t-k.co.uk

tk.international  
TK International  
TK International

Est.  
1998



## Heath Street London NW3

Superbly positioned on Heath Street in the heart of Hampstead Village, this four-bedroom upper duplex apartment offers over 1,300 sq ft of internal living space, complemented by a large south-facing terrace with far-reaching views across London. The accommodation includes a bright reception room, separate kitchen, principal bedroom with en-suite bathroom and dressing area, three additional bedrooms, and a shower room. With its stunning outlook and well-balanced layout, this four-bedroom, two-bathroom home is a standout in the current market.

Ideally located just a short walk from Hampstead Underground Station (Northern Line) and with numerous bus routes nearby, the property benefits from excellent transport links. The area is also rich in amenities, including restaurants, cafés, schools, and a boutique gym and fitness centre.

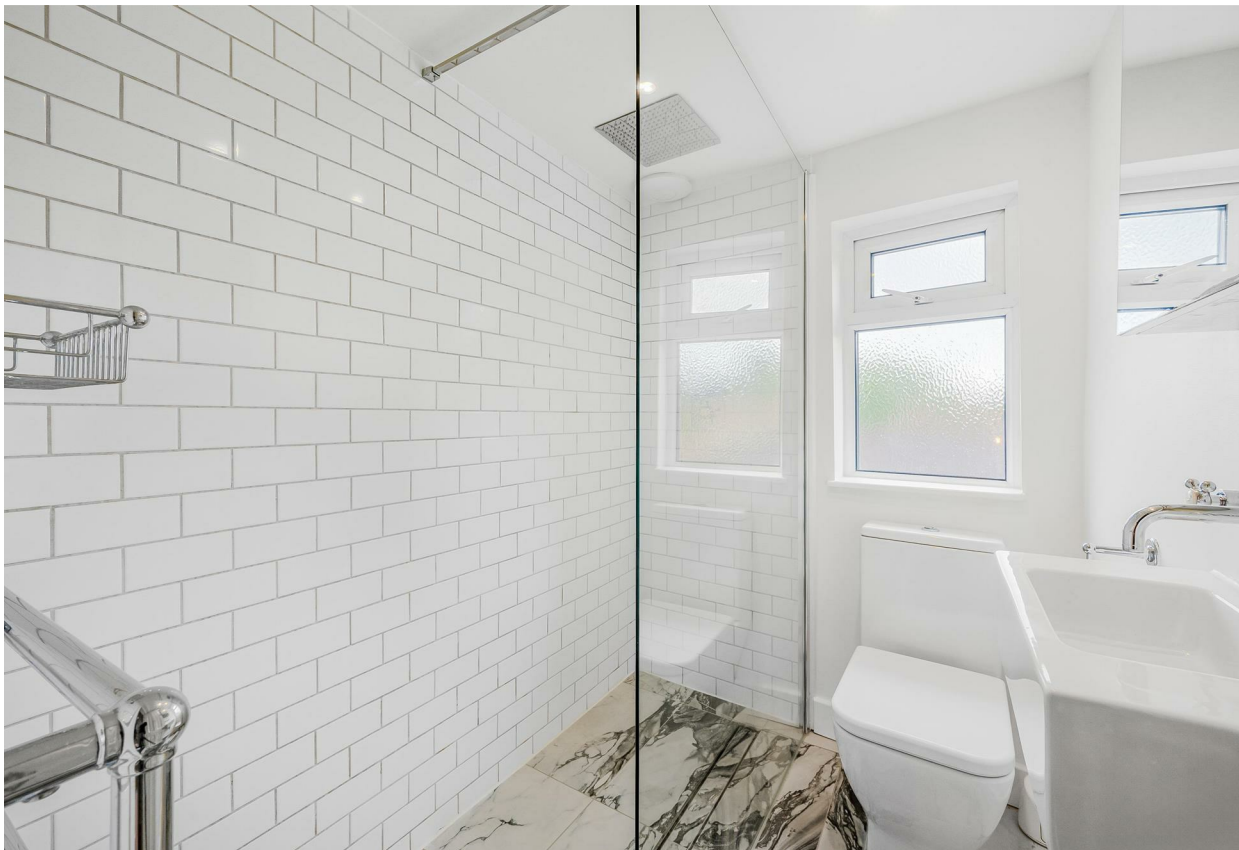
**£6,500 Per Month**

**SOLE AGENT**







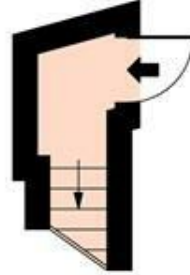




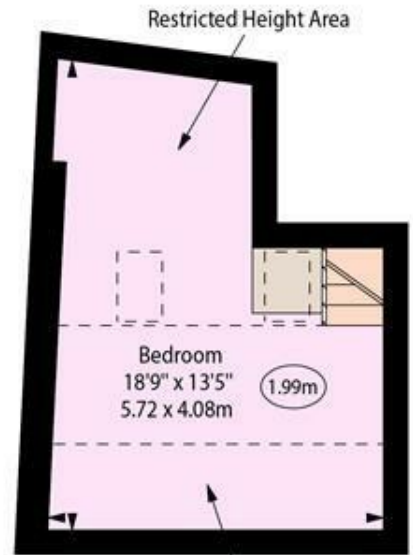
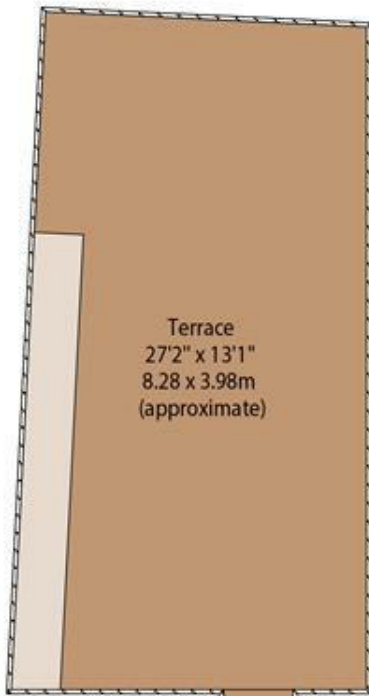
Heath Street, NW3



○ - Ceiling Height

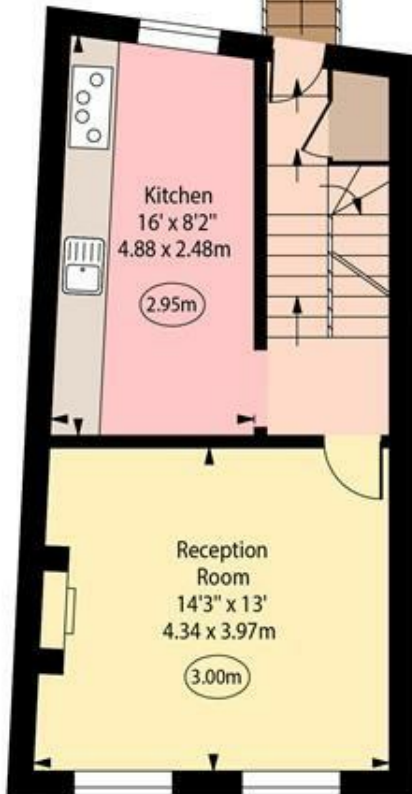


Ground Floor  
Entrance

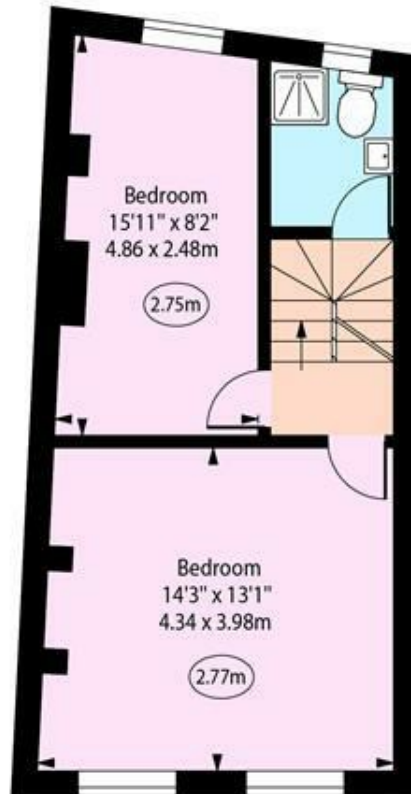


Restricted Height Area

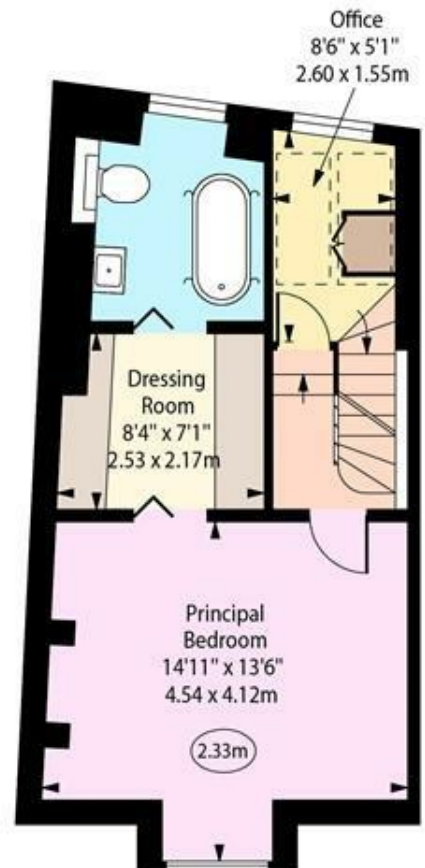
Fourth Floor



First Floor



Second Floor



Third Floor

Approx Gross Internal Area 1235 Sq Ft - 114.73 Sq M

Approx. Floor Area Including Restricted Heights 1375 Sq Ft - 127.74 Sq M

Every attempt has been made to ensure the accuracy of the floor plan shown.

However, all measurements, fixtures, fittings, and data shown are approximate interpretations and for illustrative purposes only.

Measured according to the RICS IPMS 2. Not To Scale.

[www.goldlens.co.uk](http://www.goldlens.co.uk)

Prepared for TK International

Ref. No. 027986R