



TK International  
020 7794 8700  
www.t-k.co.uk

Residential Sales  
Residential Lettings  
Property Management

Sales Office:  
9 Heath Street  
Hampstead  
London NW3 6TP  
E: sales@t-k.co.uk

Lettings Office:  
16-18 Heath Street  
Hampstead  
London NW3 6TE  
E: lettings@t-k.co.uk

tk.international  
TK International  
TK International

Est.  
1998



## Oakhill Avenue Hampstead NW3

A gracious, attractive and lateral double fronted detached five bedroom family house, discretely set back from the road behind a gated carriage driveway, and located at the upper end of this exclusive avenue close to the junction with Redington Road.

The internal accommodation is arranged over three floors and presented for sale in very good decorative order throughout. As you enter the house you are immediately struck by the elegant vaulted entrance lobby which leads into the drawing room with French doors leading on to the rear garden. The ground floor also provides a sitting room, dining room, study and garden room as well as a kitchen/breakfast room, utility room and guest WC.

The first floor offers a principal bedroom suite with en-suite dressing room & bathroom plus two further bedroom suites with en-suite bathrooms & dressing areas, with the second floor offering a fourth bedroom and fourth bathroom and a 24' x 22' studio which could easily be turned into a large bedroom 5/guest suite.

To the rear is a beautifully mature and private 54' x 35' lawned garden with flowering borders and to the front there is off street parking for two/three cars plus a single integral garage.

This wonderful family home is conveniently located within a short walk of the shops, cafes and underground station (Northern Line) in Hampstead Village.

**£7,950,000**

**JOINT SOLE AGENT**

**Freehold**



































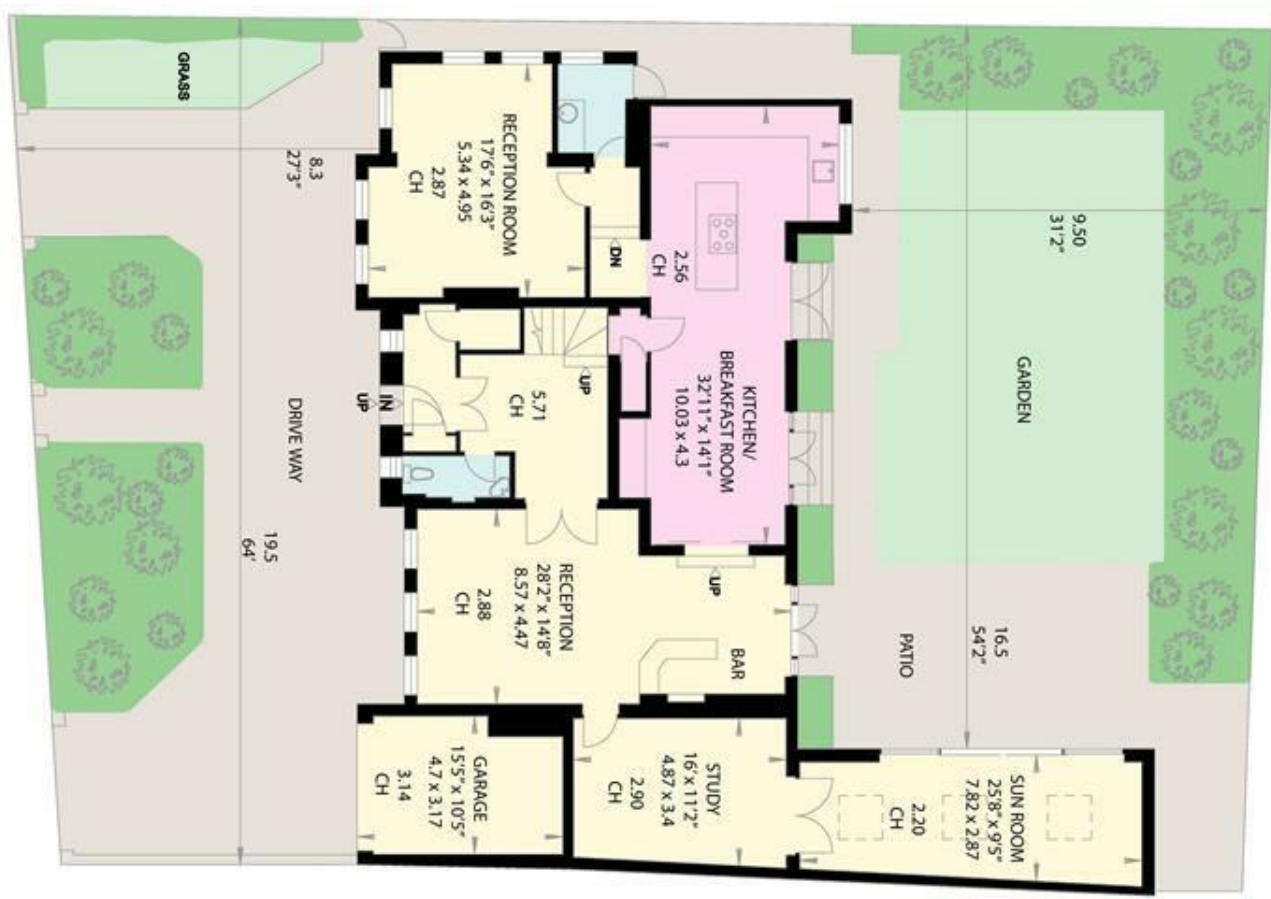




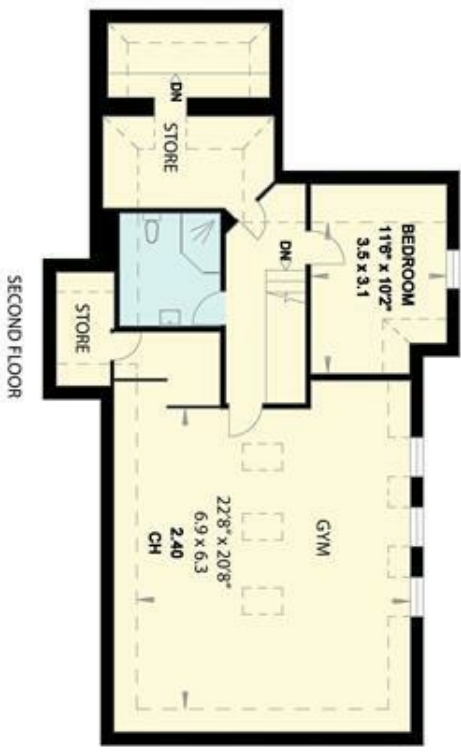
OAKHILL AVENUE  
LONDON NW3

Gross Internal Area = 414.4 sq metres  
(Excluding Restricted Heights) 4461 sq feet

Gross Internal Area = 443.5 sq metres  
(Including Restricted Heights) 4774 sq feet



GROUND FLOOR



SECOND FLOOR



FIRST FLOOR