



TK International
020 7794 8700
www.t-k.co.uk

Residential Sales
Residential Lettings
Property Management

Sales Office:
9 Heath Street
Hampstead
London NW3 6TP
E: sales@t-k.co.uk

Lettings Office:
16-18 Heath Street
Hampstead
London NW3 6TE
E: lettings@t-k.co.uk

tk.international
TK International
TK International

Est.
1998



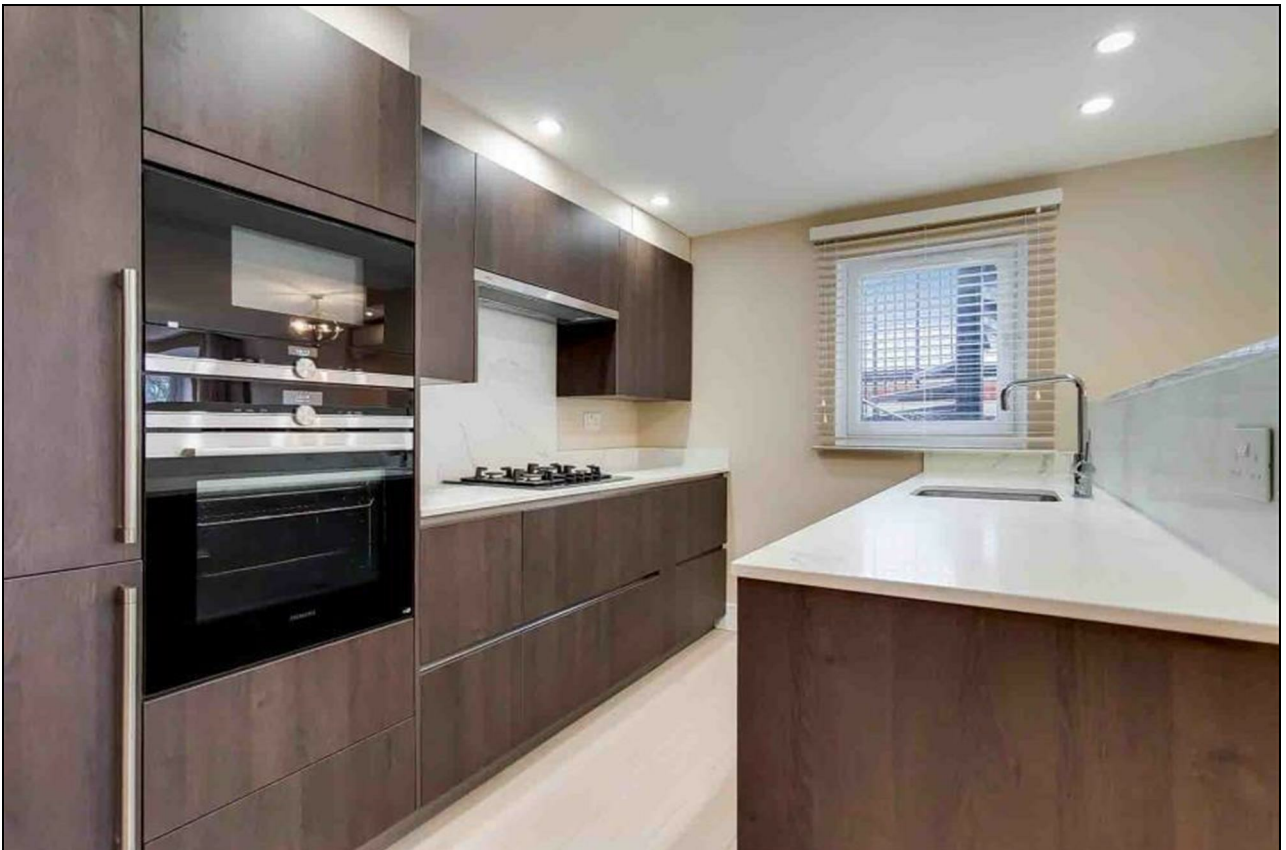
Fitzjohns Avenue London NW3

A well presented two double bedroom, two bathroom apartment set on the third floor of this period property benefiting from a spacious reception room, fully fitted integrated kitchen appliances, fully-tiled bathrooms, wood floors throughout, large windows, direct access to a private balcony and access to the very well tended communal garden.

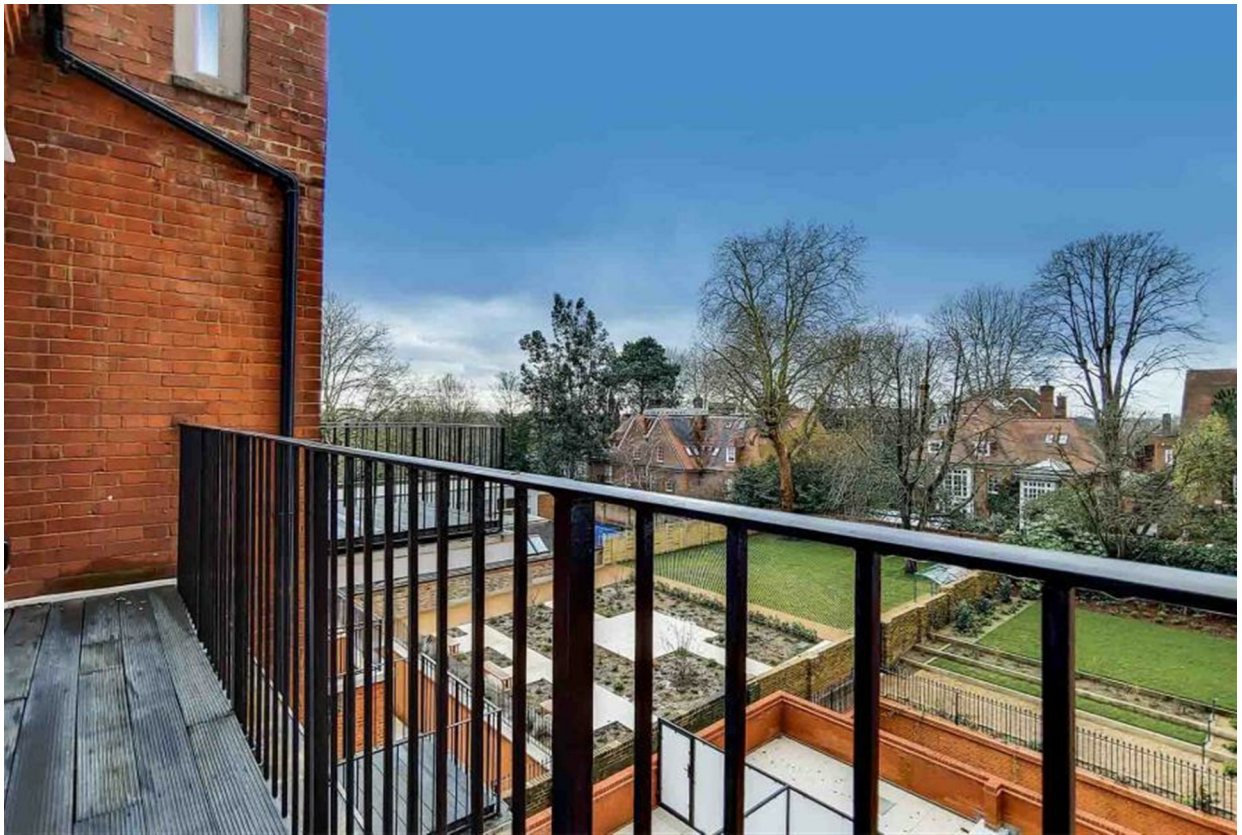
The property is conveniently located for the shops, restaurants, schools and transport facilities of Hampstead Village (Northern Line) and Swiss Cottage (Jubilee Line).

£1,200 Per Week

SOLE AGENT







Fitzjohns Avenue, NW3

CAPTURE DATE 28/01/2021 LASER SCAN POINTS 2,756,226

GROSS INTERNAL AREA

91.34 sqm / 983.18 sqft



— Third Floor



GROSS INTERNAL AREA (GIA)
The floor area of the property

91.34 sqm / 983.18 sqft



NET INTERNAL AREA (NIA)
Excludes walls and external features
Includes work rooms, residential head height

84.90 sqm / 913.86 sqft



EXTERNAL STRUCTURAL FEATURES
Balconies, terraces, verandas etc.

6.73 sqm / 72.44 sqft



RESTRICTED HEAD HEIGHT
Limited use areas under 1.5m

0.00 sqm / 0.00 sqft