



TK International
020 7794 8700
www.t-k.co.uk

Residential Sales
Residential Lettings
Property Management

Sales Office:
9 Heath Street
Hampstead
London NW3 6TP
E: sales@t-k.co.uk

Lettings Office:
16-18 Heath Street
Hampstead
London NW3 6TE
E: lettings@t-k.co.uk

tk.international
TK International
TK International

Est.
1998



Fitzjohns Avenue Hampstead NW3

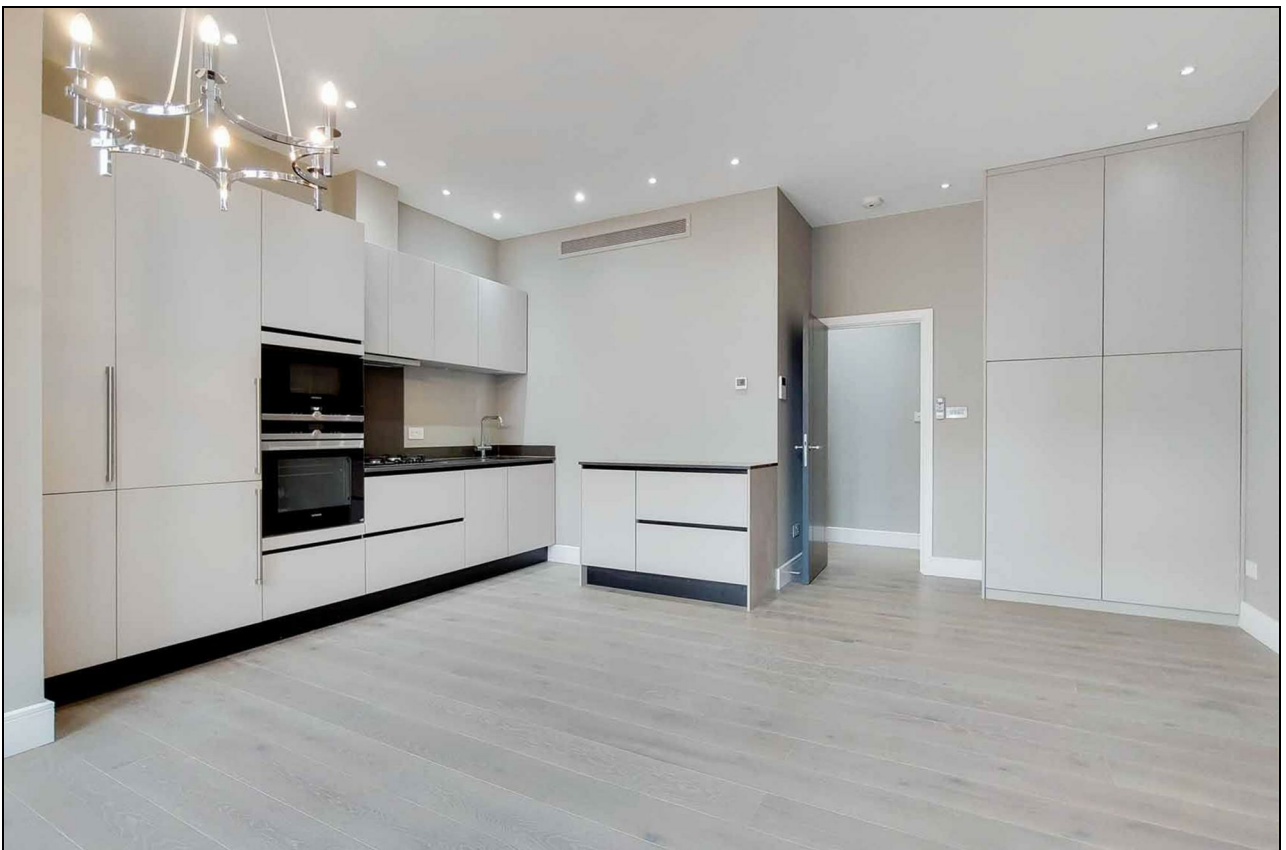
A newly presented one bedroom apartment located on the first floor of this stylish Victorian house conversion in Hampstead.

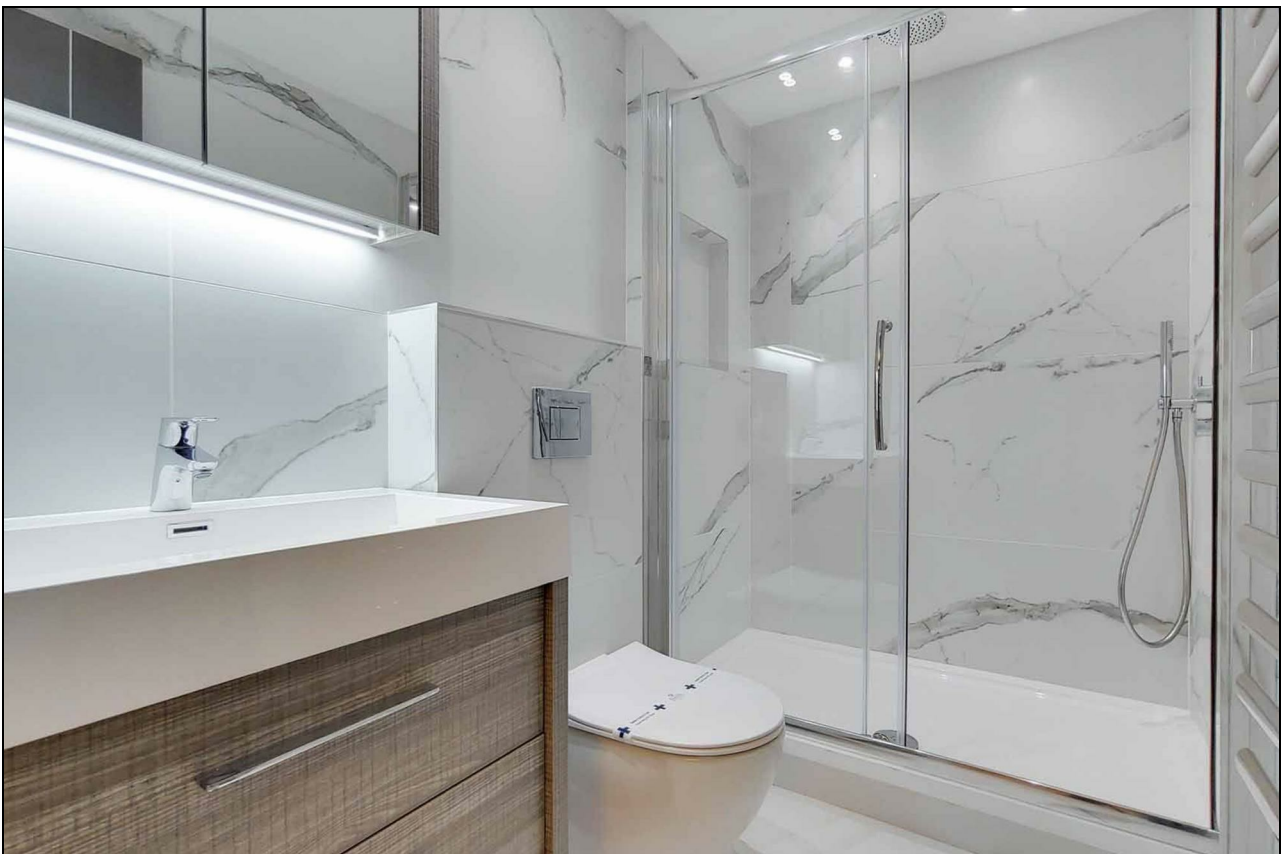
The apartment boasts a bright reception room, modern kitchen, bedroom with en suite bathroom, a further guest WC.

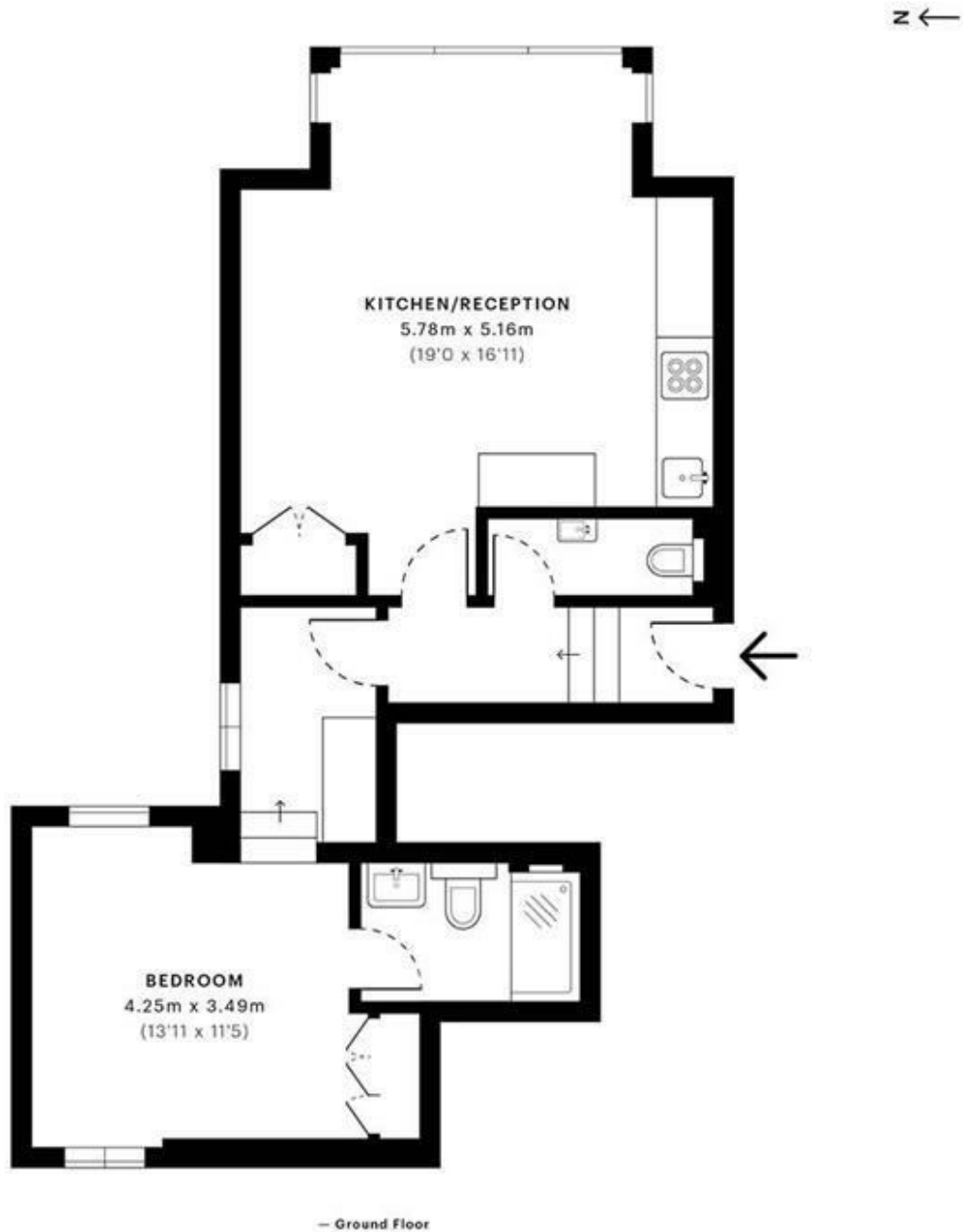
The property is situated within walking distance to Swiss Cottage and Hampstead underground stations, close to all the amenities of Hampstead Village.

EPC Rating: C

£695 Per Week







GROSS INTERNAL AREA (GIA)
The footprint of the property
51.96 sqm / 559.29 sqft

NET INTERNAL AREA (NIA)
Excludes walls and external features
Includes washrooms, restricted head height
49.68 sqm / 534.75 sqft

EXTERNAL STRUCTURAL FEATURES
Balconies, terraces, verandas etc.
0.00 sqm / 0.00 sqft

RESTRICTED HEAD HEIGHT
Limited use area under 1.5 m
0.00 sqm / 0.00 sqft



Spec Verified floor plans are produced in accordance with Royal Institution of Chartered Surveyors' Property Measurement Standards. Plots and gardens are illustrative only and excluded from all area calculations. Due to rounding, numbers may not add up precisely. All measurements shown for the individual room lengths and widths are the maximum points of measurements captured in the scan.

IPMS 3B RESIDENTIAL 54.19 sqm / 583.30 sqft
IPMS 3C RESIDENTIAL 52.19 sqm / 561.77 sqft

SPEC ID: 5f3513c07fe290dbad68f58