



TK International
020 7794 8700
www.t-k.co.uk

Residential Sales
Residential Lettings
Property Management

Sales Office:
9 Heath Street
Hampstead
London NW3 6TP
E: sales@t-k.co.uk

Lettings Office:
16-18 Heath Street
Hampstead
London NW3 6TE
E: lettings@t-k.co.uk

tk.international
TK International
TK International

Est.
1998



St. Johns Wood Park St. Johns Wood NW8

A brand newly refurbished, four-bedroom townhouse that has been interior designed and furnished to an exquisitely high standard with a magnificently landscaped garden/patio, which is set within a gated development with 24-hour portage.

The ground floor comprises a bright and spacious open-plan kitchen / reception room which has direct access to a rear garden, a further reception room / study and shower room. The first floor is occupied by the spacious master bedroom suite with a dressing area and an additional shower room. Three further double bedrooms and a family bathroom occupy the top floor of this beautiful townhouse.

The property further benefits from excellent amount of storage (including a shed in the garden), alarm and video entry system, fully air conditioned, underfloor heating, stone flooring on the ground floor and wood floors in the bedrooms.

The area benefits from excellent transport amenities from Swiss Cottage Underground Station (Jubilee line) and South Hampstead Station (overground), and also from local retail and leisure facilities on St Johns Wood High Street.

EPC Rating: D

£2,950 Per Week

SOLE AGENT



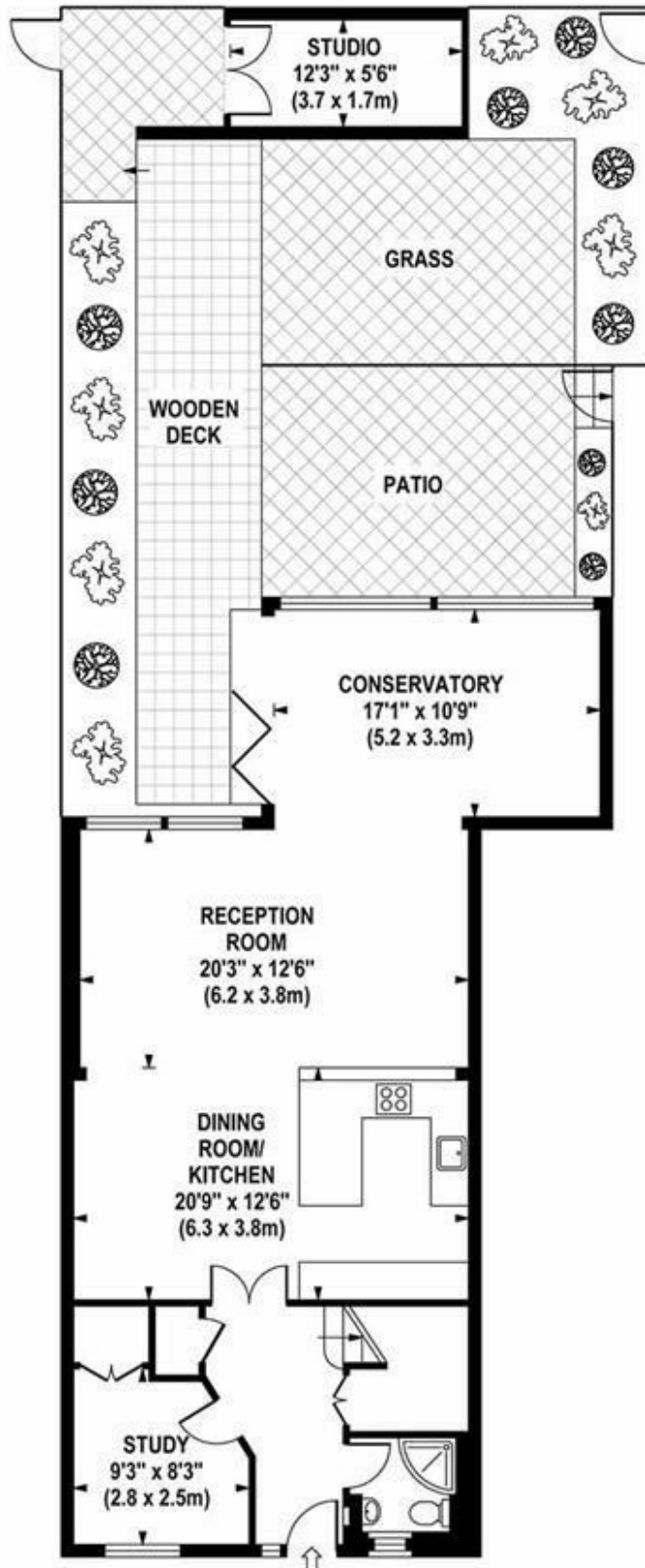




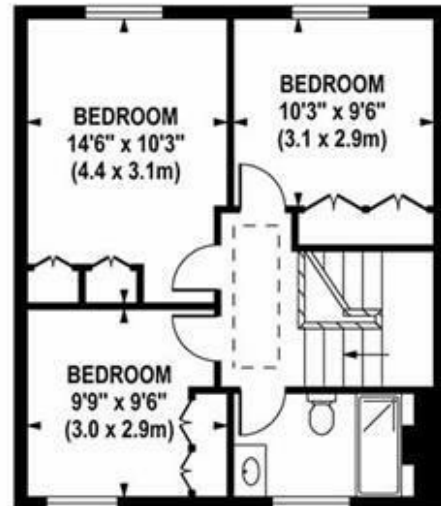
COURT HOUSE

Approximate Gross Internal Area 2024 sq ft / 188.0 sq m
(Including Studio)

Approximate Gross Internal Area 1956 sq ft / 181.7 sq m
(Excluding Studio)



GROUND FLOOR
GROSS INTERNAL
FLOOR AREA 952 SQ FT



SECOND FLOOR
GROSS INTERNAL
FLOOR AREA 502 SQ FT



FIRST FLOOR
GROSS INTERNAL
FLOOR AREA 502 SQ FT

Although every attempt has been made to ensure accuracy, all measurements are approximate.
The floor plan's for illustrative purposes only and not to scale. Measured in accordance to RICS standards.