



TK International  
020 7794 8700  
www.t-k.co.uk

Residential Sales  
Residential Lettings  
Property Management

Sales Office:  
9 Heath Street  
Hampstead  
London NW3 6TP  
E: sales@t-k.co.uk

Lettings Office:  
16-18 Heath Street  
Hampstead  
London NW3 6TE  
E: lettings@t-k.co.uk

tk.international  
TK International  
TK International

Est.  
1998



**Wildwood Road  
Hampstead Garden Suburb  
NW11**

Situated on one of the Suburb's most sought after roads, directly opposite the Heath extension, is this attractive detached, three storey, six bedroom house.

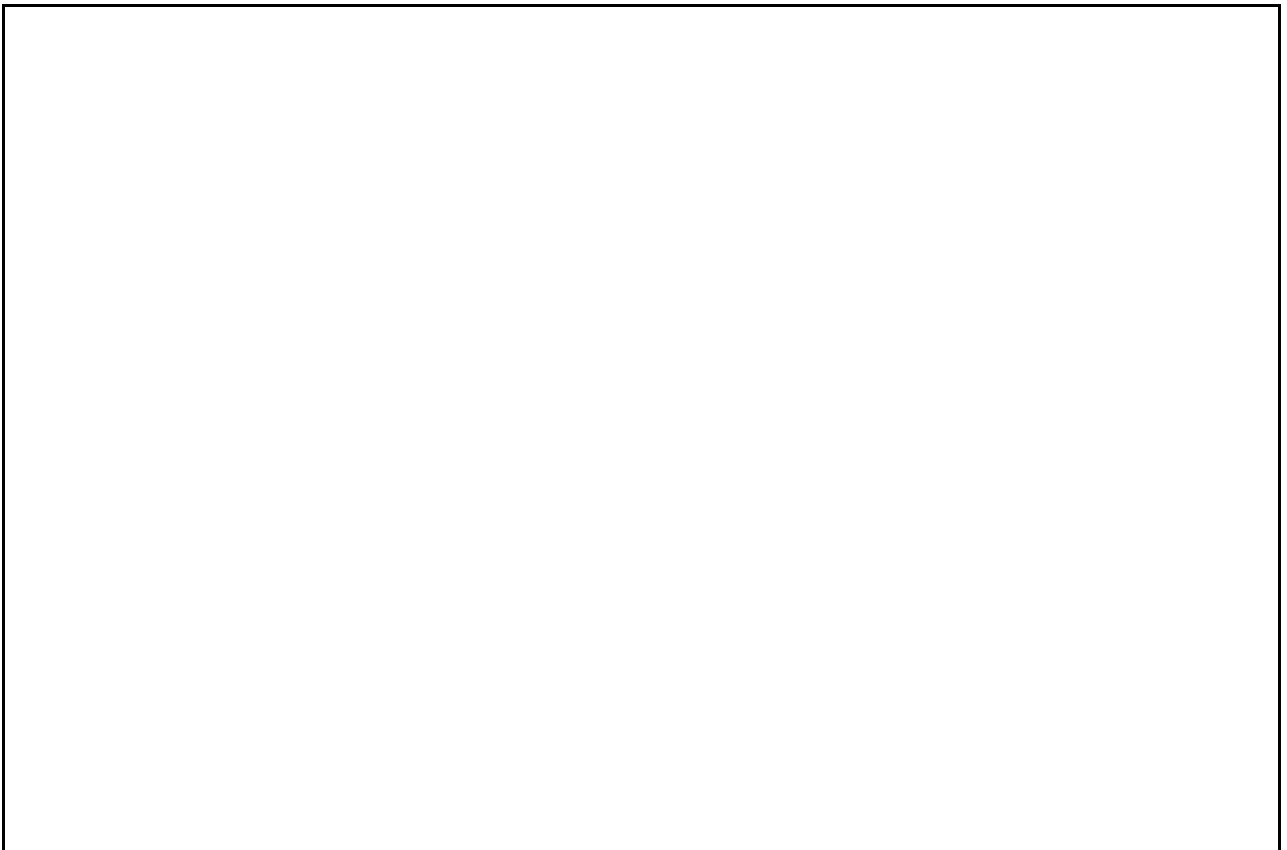
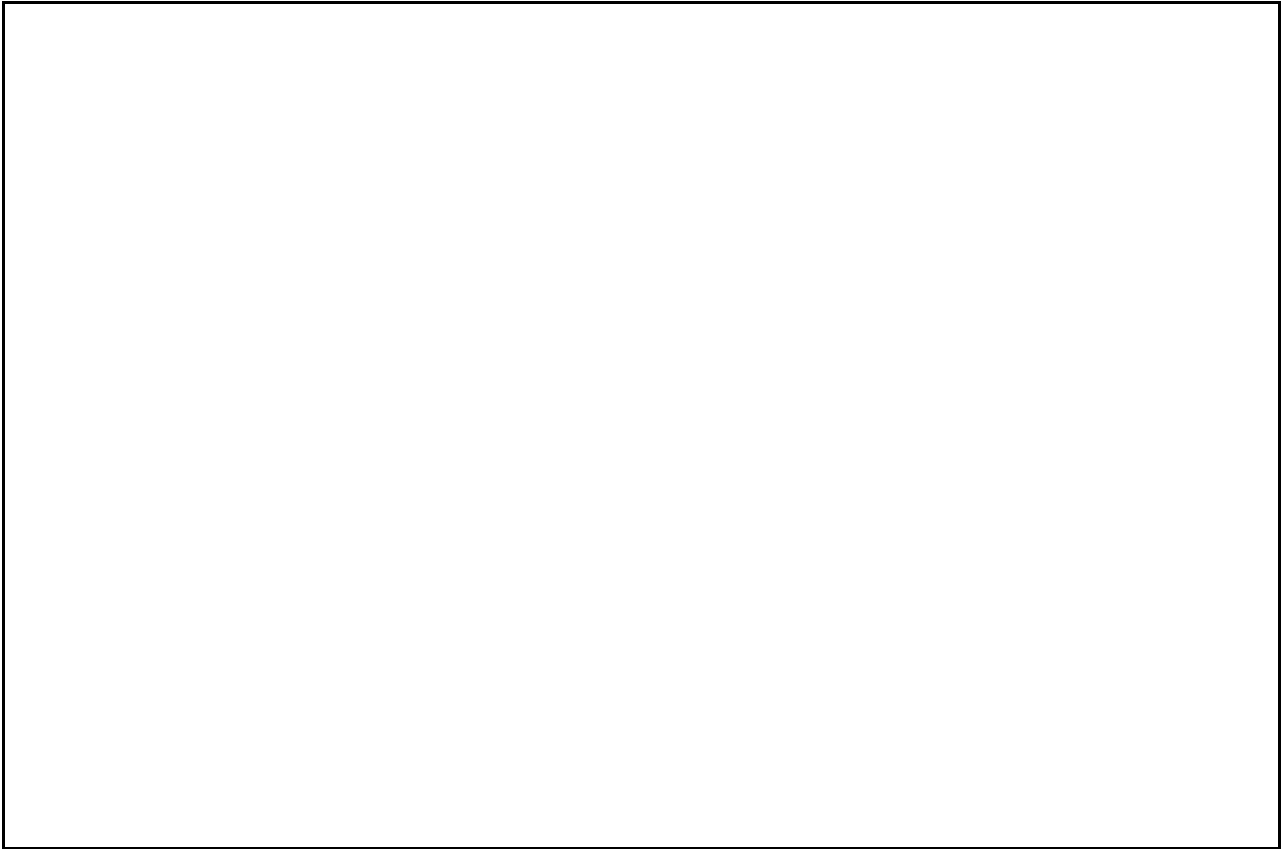
The bright and well-proportioned family accommodation includes a wonderful 39' reception room, separate dining room and kitchen/breakfast room with two pairs of French doors that lead out to an 80' mature garden.

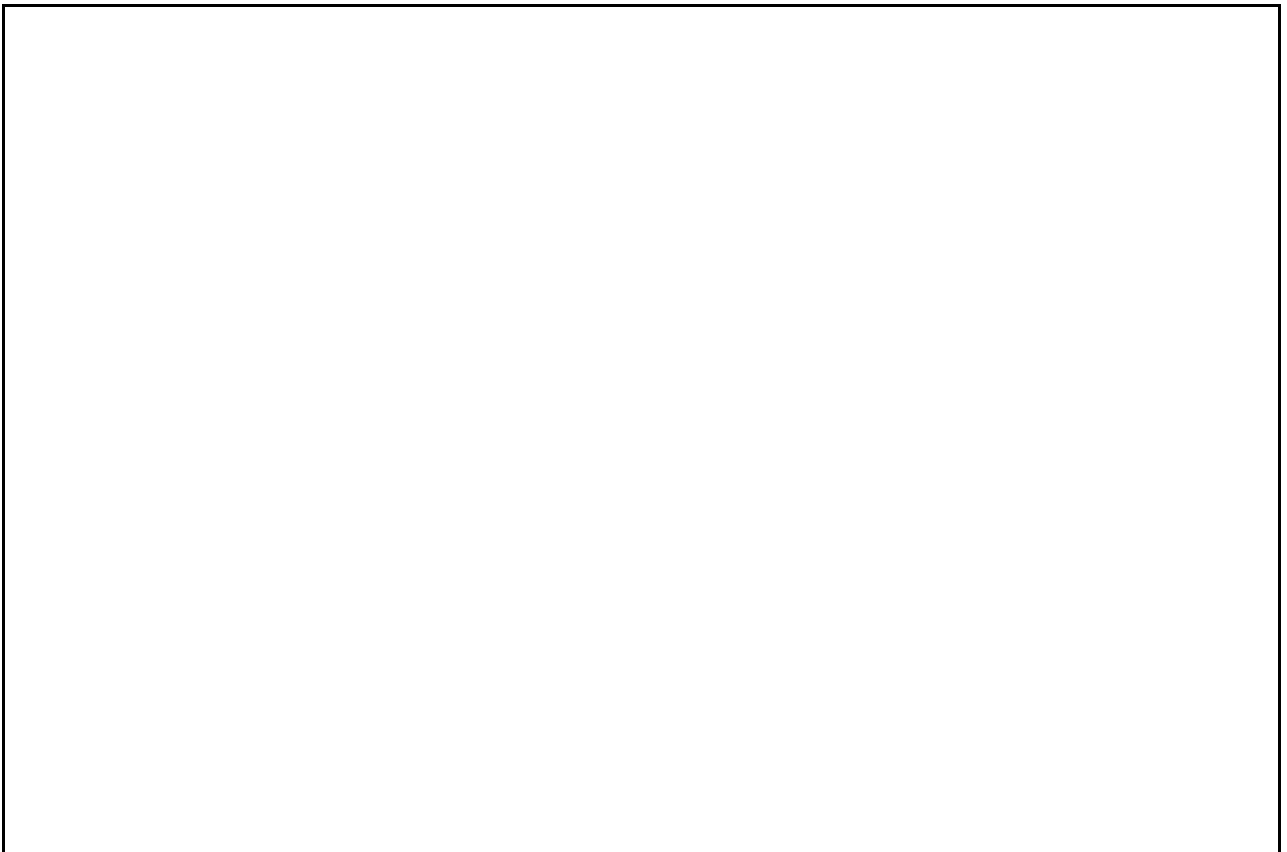
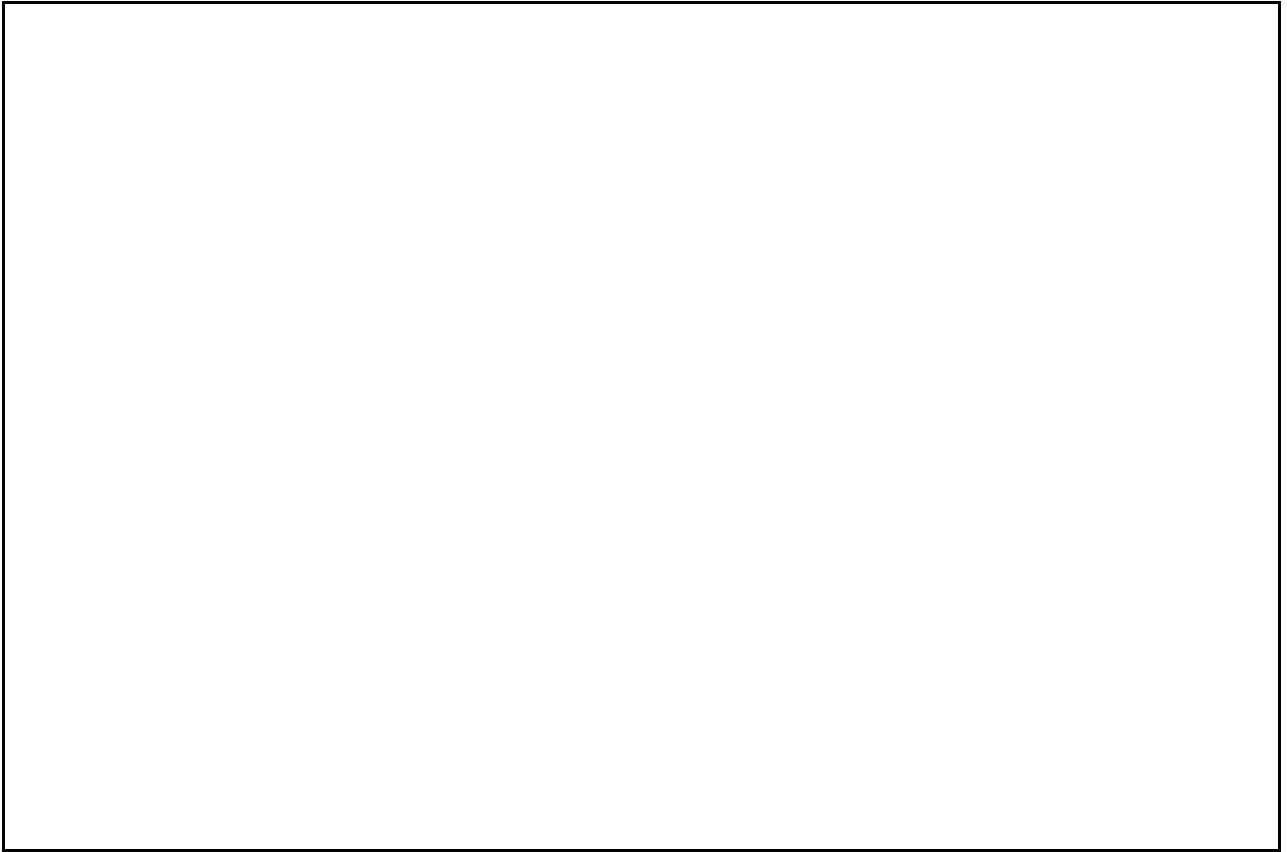
There is also the benefit of a single garage plus off street parking for one car.

**£4,250,000**

**SOLE AGENT**

**Freehold**







# Wildwood Road, London, NW11

Approximate Area = 2652 sq ft / 246.3 sq m

Limited Use Area(s) = 36 sq ft / 3.3 sq m

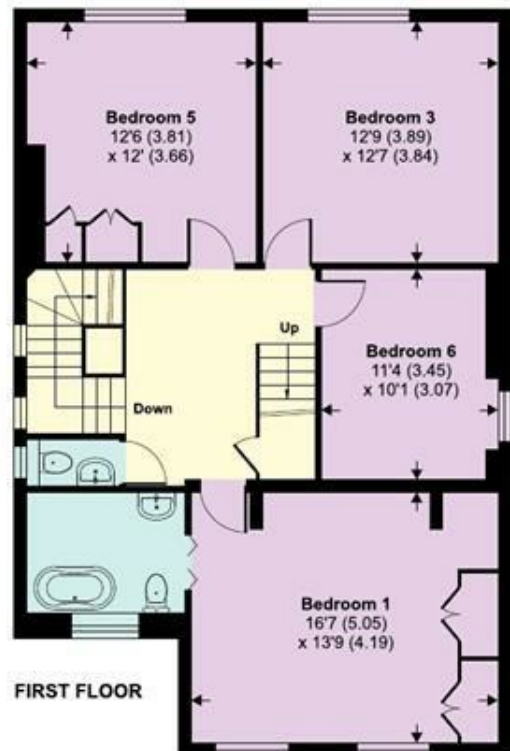
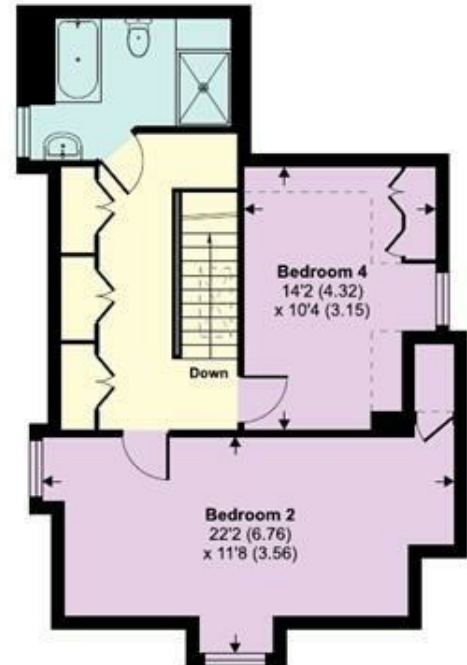
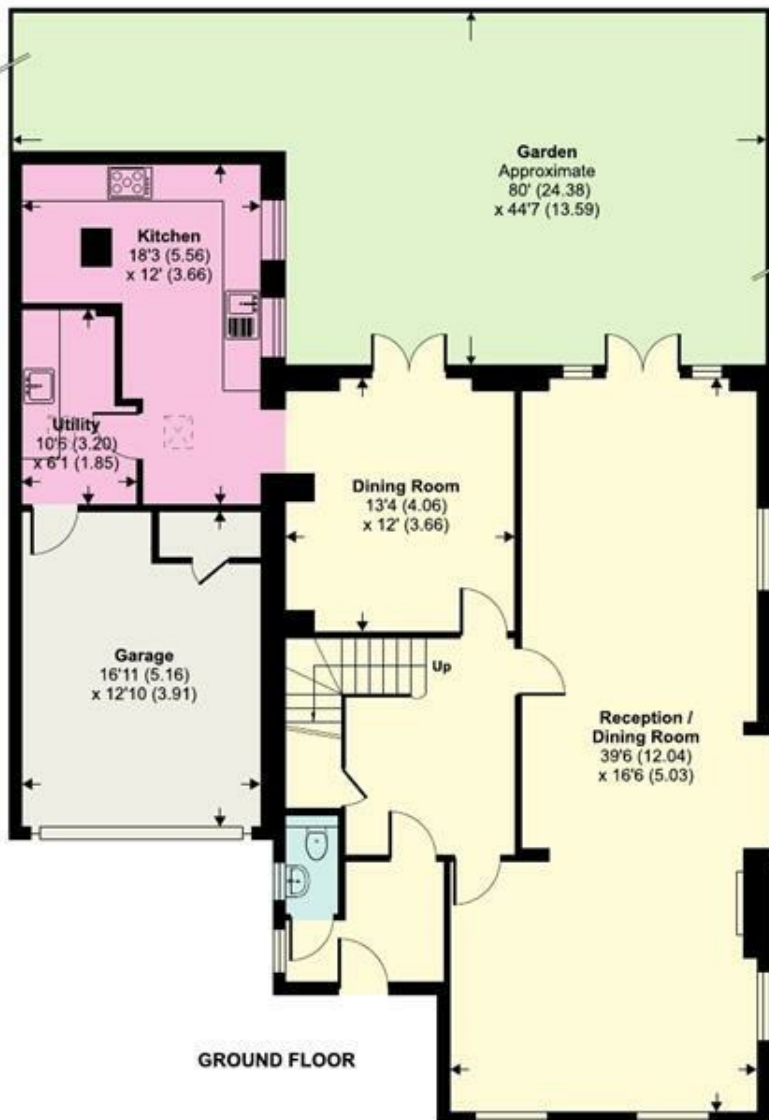
Garage = 218 sq ft / 20.2 sq m

Total = 2906 sq ft / 269.8 sq m

For identification only - Not to scale



Denotes restricted  
head height



Certified  
Property  
Measurer

Floor plan produced in accordance with RICS Property Measurement Standards incorporating International Property Measurement Standards (IPMS2 Residential). © nichecom 2024.  
Produced for TK (Hampstead) Ltd. REF: 1075941