



TK International
020 7794 8700
www.t-k.co.uk

Residential Sales
Residential Lettings
Property Management

Sales Office:
9 Heath Street
Hampstead
London NW3 6TP
E: sales@t-k.co.uk

Lettings Office:
16-18 Heath Street
Hampstead
London NW3 6TE
E: lettings@t-k.co.uk

tk.international
TK International
TK International

Est.
1998



Burgess Hill The Hocrofts NW2

On the market for the first time in nearly 25 years, an attractive double fronted six bedroom detached house in one of the most desirable of locations on The Hocroft Estate.

This impressive family home boasts 3,297 sq ft of accommodation and retains many original period features including wood paneling, plaster work, fireplaces and ceiling mouldings. The house is unmodernised but offers a great opportunity to create a charming new up-to date family home.

The ground floor features two elegant reception rooms, kitchen and dining room with access onto the west facing rear garden. There is also a guest cloakroom and a walk-in pantry.

Arranged on the first floor, the principal bedroom has a generous ensuite bathroom and there are four further bedrooms, a family bathroom and separate WC. Across the entire upper floor there is a large loft room or sixth bedroom which could be altered to create at least two further bedrooms and a bathroom.

The house also benefits from a driveway providing off street parking leading to a single garage.

Burgess Hill is ideally located with easy access to the many transport connections along the Finchley Road, the fashionable shops and restaurants of Hampstead, West Hampstead and Brent Cross and is well positioned for the many local schools in the area and only a short walk from Golders Hill.

£2,200,000

JOINT SOLE AGENT

Freehold











Burgess Hill, NW2

Approximate gross internal area

3,297 sq ft / 306.29 sq m

(Including Eaves Storage & Restricted Height Under 1.5m)
Eaves Storage & Restricted Height Under 1.5m
293 sq ft. / 27.22 sq m

Key :
CH - Ceiling Height

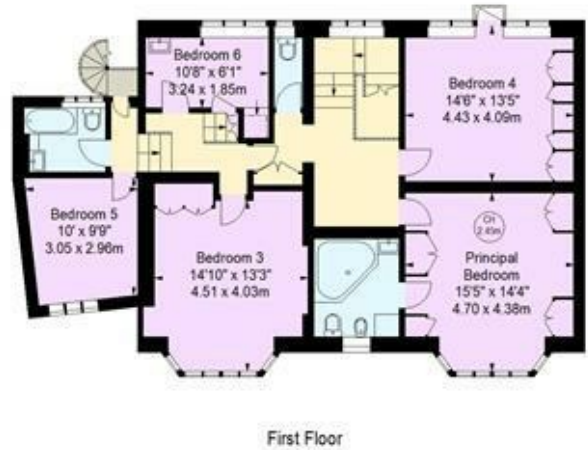
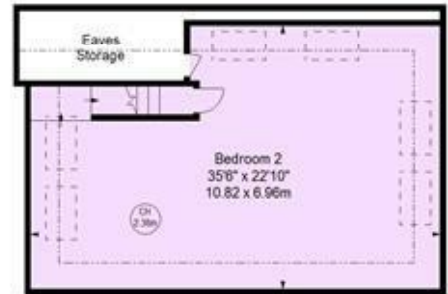


Illustration For Identification Purposes Only.
All measurements and areas are approximate, not to scale.
© Orange Tree Photography