



TK International
020 7794 8700
www.t-k.co.uk

Residential Sales
Residential Lettings
Property Management

Sales Office:
9 Heath Street
Hampstead
London NW3 6TP
E: sales@t-k.co.uk

Lettings Office:
16-18 Heath Street
Hampstead
London NW3 6TE
E: lettings@t-k.co.uk

tk.international
TK International
TK International

Est.
1998



Haversham Place Highgate N6

This wonderful six bedroom detached house provides approximate 4,529sq ft of extremely well planned family accommodation over three floors.

The ground floor is entered via a large entrance hall which leads to a 25'5 reception/dining room, second reception room, television room and study, as well as a large kitchen breakfast room with separate utility room. This floor is ideal for entertaining.

The first floor enjoys five double bedrooms and four bathrooms (three en suite), with the second floor given entirely to the principal bedroom suite.

The large surrounding garden is well screened and mainly laid to lawn with mature trees and shrubs and there is off street parking for three cars as well as a double garage.

Haversham Place is a prestigious development built by Octagon homes in the 1990's. It comprises seven individual houses, each set within their own grounds and grouped in a superb landscaped wooded setting, approached via electronically controlled security gates.

Situated off Merton Lane, which runs close to the summit of Highgate West Hill down to Hampstead Heath, Swain's Lane and the Ponds.

Highgate Village has an array of charming shops, cafes and restaurants as well as highly regarded private schools, Highgate School (mixed) and Channing School (girls). It is well served for public transport with direct bus routes to the City and to Brent Cross.

£5,950,000

JOINT SOLE AGENT

Freehold









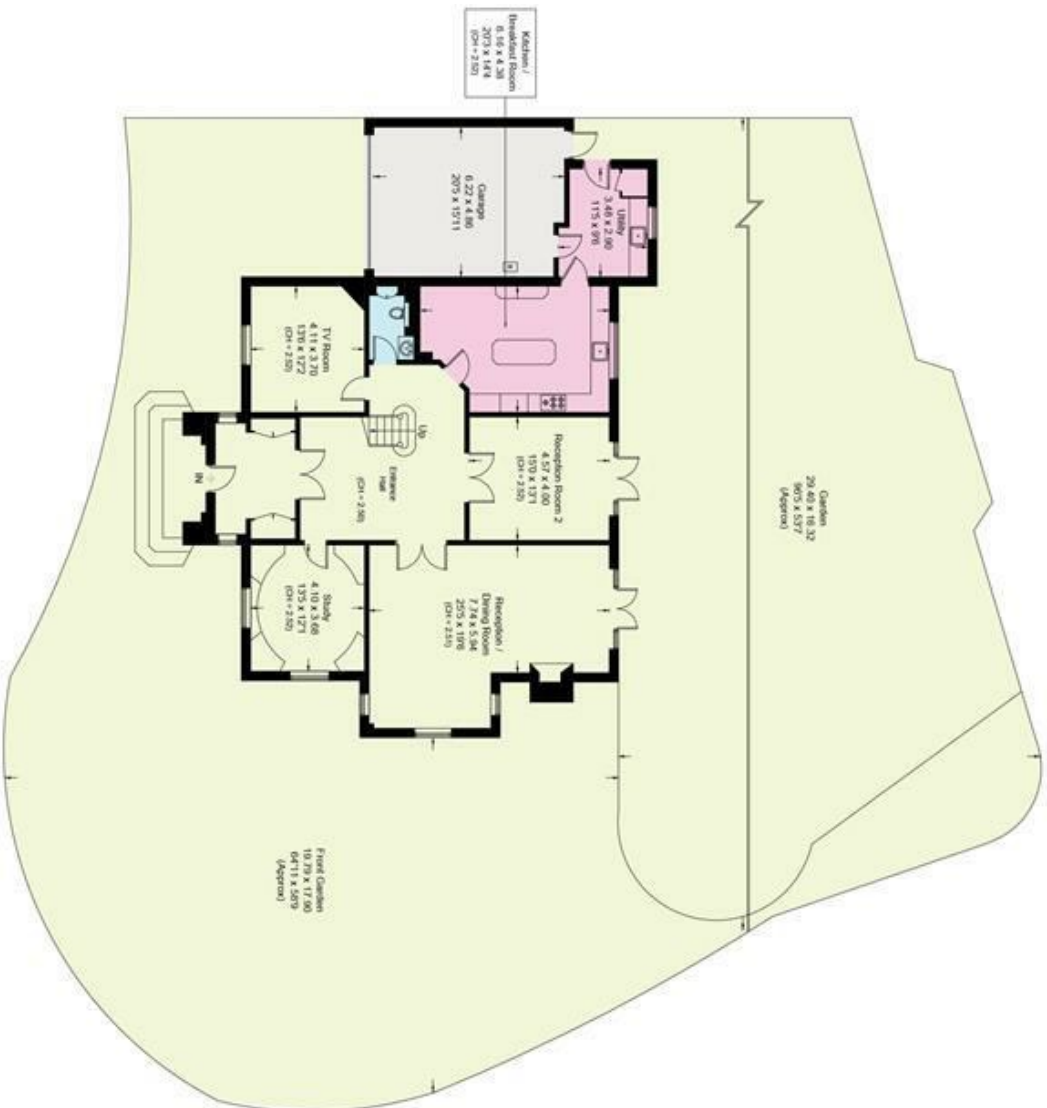




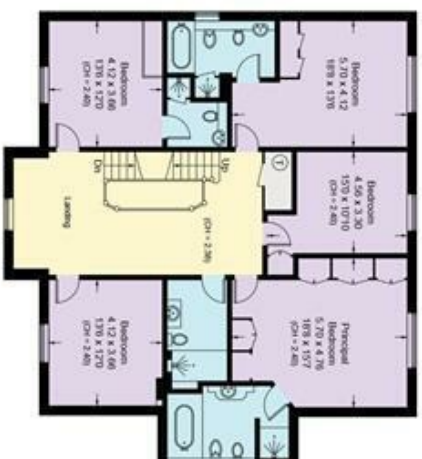
Haversham Place, N6

Approximate Area = 420.8 sq m / 4529 sq ft
(Including Garage)

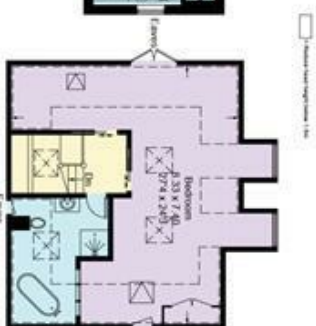
Including Limited Use Area (27.2 sq m / 293 sq ft)



Ground Floor
Approximate Area = 290.8 sq m / 3137 sq ft



First Floor
Approximate Area = 157.3 sq m / 1693 sq ft



Second Floor
Approximate Area = 33.3 sq m (379 sq ft)
Including Limited Use Area (27.2 sq m / 293 sq ft)

Surveyed and drawn in accordance with the International property measurements standards (IPMS 2: Residential). Not drawn to scale unless stated. Whilst every care is taken in the preparation of this plan, please check all dimensions, shapes and compass bearings before making any decisions reliant upon them.