



TK International  
020 7794 8700  
www.t-k.co.uk

Residential Sales  
Residential Lettings  
Property Management

Sales Office:  
9 Heath Street  
Hampstead  
London NW3 6TP  
E: sales@t-k.co.uk

Lettings Office:  
16-18 Heath Street  
Hampstead  
London NW3 6TE  
E: lettings@t-k.co.uk

tk.international  
TK International  
TK International

Est.  
1998



## Hampstead Way Hampstead Garden Suburb NW11

A recently refurbished, beautifully presented, bright and spacious semi-detached, double fronted four bedroom house, laterally arranged over two floors only, plus a large attic with skylights which could potentially be converted to a fifth bedroom and shower room.

The house offers a central lobby (with guest WC), an inter-communicating double reception and dining room on the right hand side and a 35' front to back kitchen/family room to the left with underfloor heating, a built-in pantry and a separate utility room. Access to the beautiful 63' south-west facing mature rear garden is gained from both the reception room and the kitchen/breakfast room via floor to ceiling French doors.

The first floor offers a principal bedroom with en-suite bathroom, three further double bedrooms and a family bathroom. All bathrooms enjoy underfloor heating.

The extensive shopping and public transport amenities of both Golders Green and Temple Fortune are located approximately a quarter of a mile distant and the vast open spaces of the Heath Extension is within a short walk.

**£1,850,000**

**SOLE AGENT**

**Freehold**

















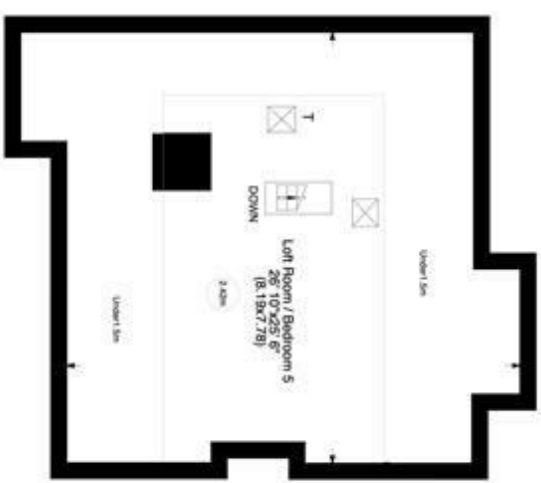
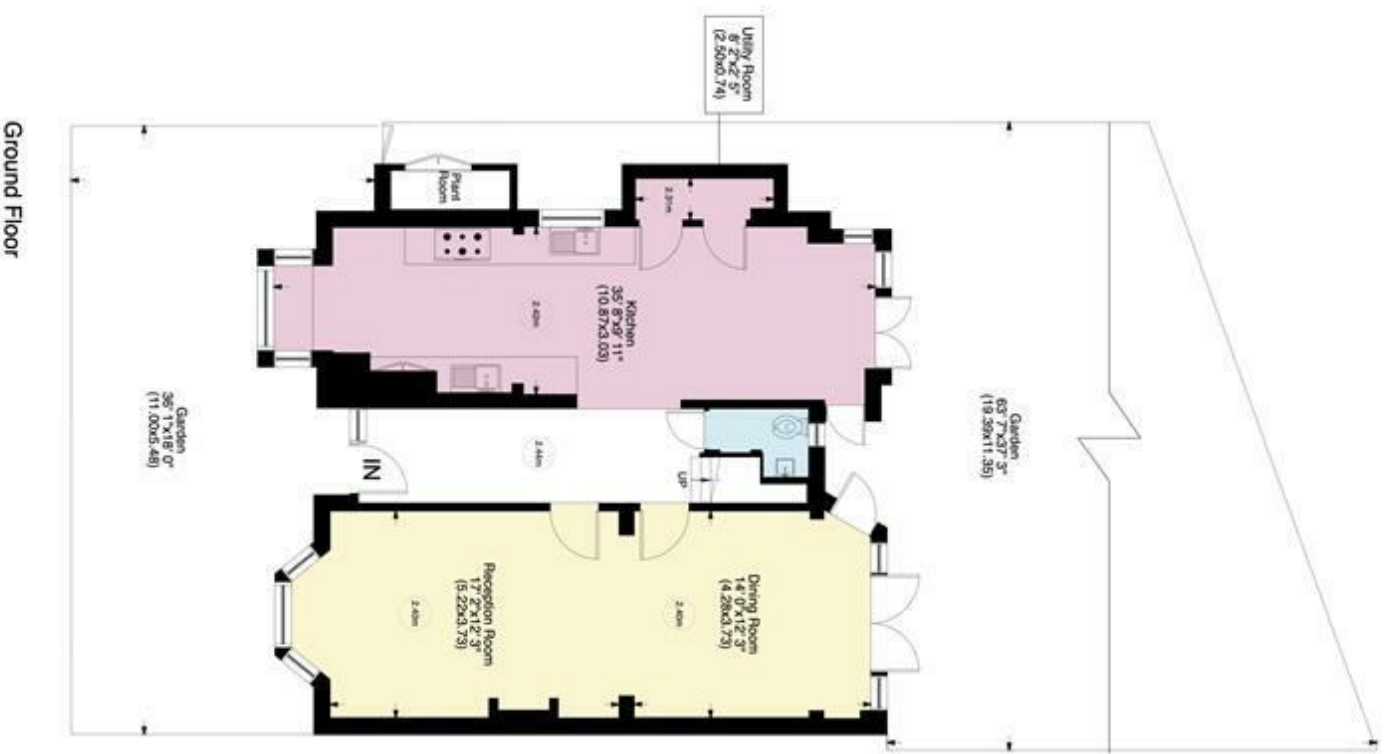


# Hampstead Way NW11

Gross internal area (approx.)

227 Sq m (2438 Sq ft) Including Plant Room, and Loft  
164 Sq m (1769 Sq ft) Excluding Plant Room, and Loft

For identification only, Not to Scale



[www.WilliamSalisbury.Photography](http://www.WilliamSalisbury.Photography)

Not to Scale, for guidance only and must not be relied upon as a statement of fact. All measurements are approximate only (and have been prepared in accordance with the current edition of the RICS Code of Measuring Practice).