



TK International
020 7794 8700
www.t-k.co.uk

Residential Sales
Residential Lettings
Property Management

Sales Office:
9 Heath Street
Hampstead
London NW3 6TP
E: sales@t-k.co.uk

Lettings Office:
16-18 Heath Street
Hampstead
London NW3 6TE
E: lettings@t-k.co.uk

tk.international
TK International
TK International

Est.
1998



Stormont Road Highgate N6

Located on one of the finest roads in Highgate and set back behind a gated carriage driveway for numerous cars on a substantial corner plot of 0.4 acre, is this double fronted detached house which was newly built in 2012, and is now offered for sale in beautiful decorative condition throughout.

The very generous accommodation of 7,885 sq ft/733 sq m (net) is arranged over three lateral footplates and provides an excellent balance of reception space and bedroom suites, with an emphasis on internal entertaining which works hand in hand with the external patio loggia with retractable roof, which in effect doubles as a wonderful extra summer 'room'.

The ground floor offers a family/TV room, formal dining room, interconnecting informal reception/dining/kitchen-breakfast room which runs across the back of the house with full height sliding doors leading on to the garden, study, gym, 2nd kitchen, guest W.C and two garages. The first floor offers a sophisticated master suite of large bedroom, dressing room and en-suite bathroom, three further bedrooms all with en-suite bathrooms, and the second floor (which is accessed via a secondary staircase) offers two further bedrooms with en-suite bathrooms, a games room/bedroom 7, a utility room/kitchenette and loft storage.

A major feature of the house is the magnificent rear garden which has been laid out formally and planted beautifully by the vendors, with a large lawn, deep flowering borders and footpath, all of which is framed by rows of mature magnolia trees.

£11,500,000

SOLE AGENT

Freehold

















Stormont Road N6

Gross internal area (approx.)

827 Sq m (8902 Sq ft) Including under eaves and under 1.5m

733 Sq m (7885 Sq ft) Excluding under eaves and under 1.5m

For identification only, Not to Scale



Ground Floor

www.WilliamSalisbury.Photography

Not to Scale, for guidance only and must not be relied upon as a statement of fact. All measurements are approximate only (and have been prepared in accordance with the current edition of the RICS Code of Measuring Practice).

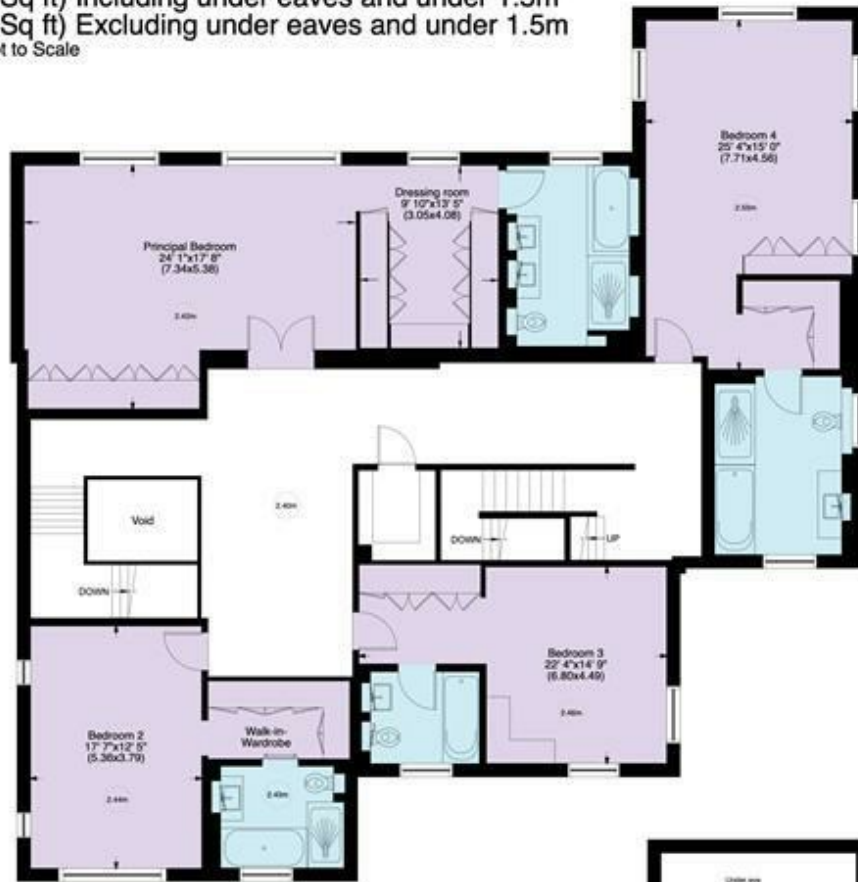
Stormont Road N6

Gross internal area (approx.)

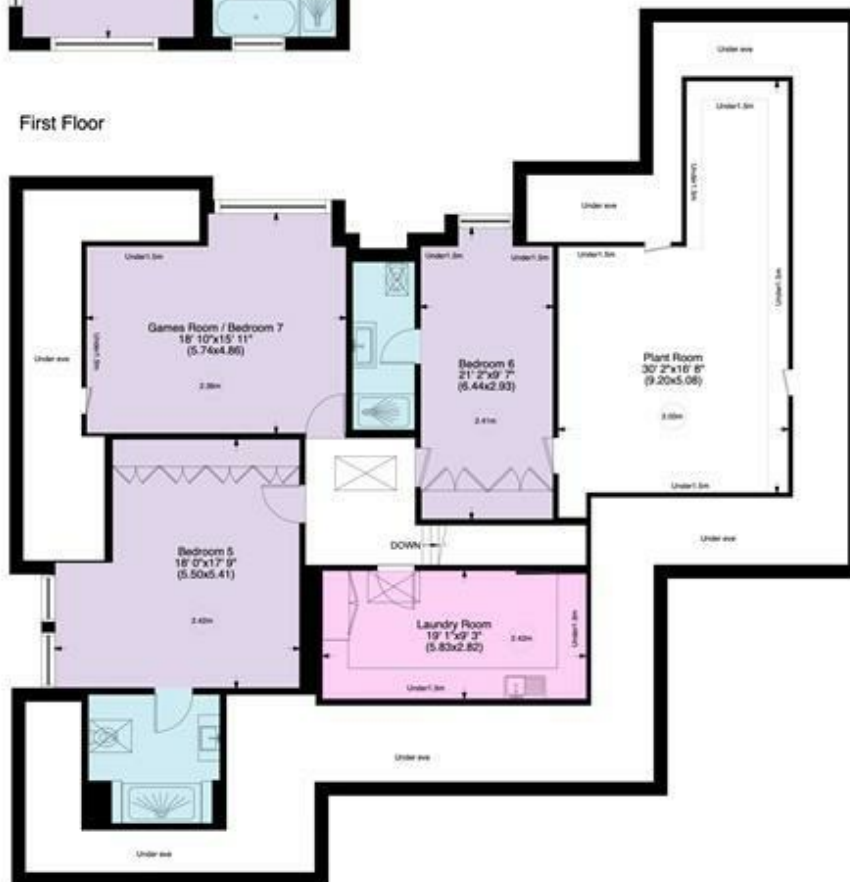
827 Sq m (8902 Sq ft) Including under eaves and under 1.5m

733 Sq m (7885 Sq ft) Excluding under eaves and under 1.5m

For identification only, Not to Scale



First Floor



Second Floor

www.WilliamSalisbury.Photography

Not to Scale, for guidance only and must not be relied upon as a statement to fact. All measurements areas are approximate only (and have been prepared in accordance with the current edition of the RICS Code of Measuring Practice).

Stormont Road N6

Acre 0.41 (approx.)

For identification only, Not to Scale



Garden
Approximately
128' 4"x80' 10"
(39.11x24.64)

Drive
Approximately
84' 4"x59' 9"
(25.71x16.70)

www.WilliamSalisbury.Photography

Not to Scale, for guidance only and must not be relied upon as a statement to fact. All measurements areas are approximate only (and have been prepared in accordance with the current edition of the RICS Code of Measuring Practice).