



TK International
020 7794 8700
www.t-k.co.uk

Residential Sales
Residential Lettings
Property Management

Sales Office:
9 Heath Street
Hampstead
London NW3 6TP
E: sales@t-k.co.uk

Lettings Office:
16-18 Heath Street
Hampstead
London NW3 6TE
E: lettings@t-k.co.uk

 tk.international
 TK International
 TK International

Est.
1998



Fitzjohns Avenue Hampstead NW3

A newly presented four bedroom first floor apartment located on the first floor of this stylish Victorian house conversion in Hampstead.

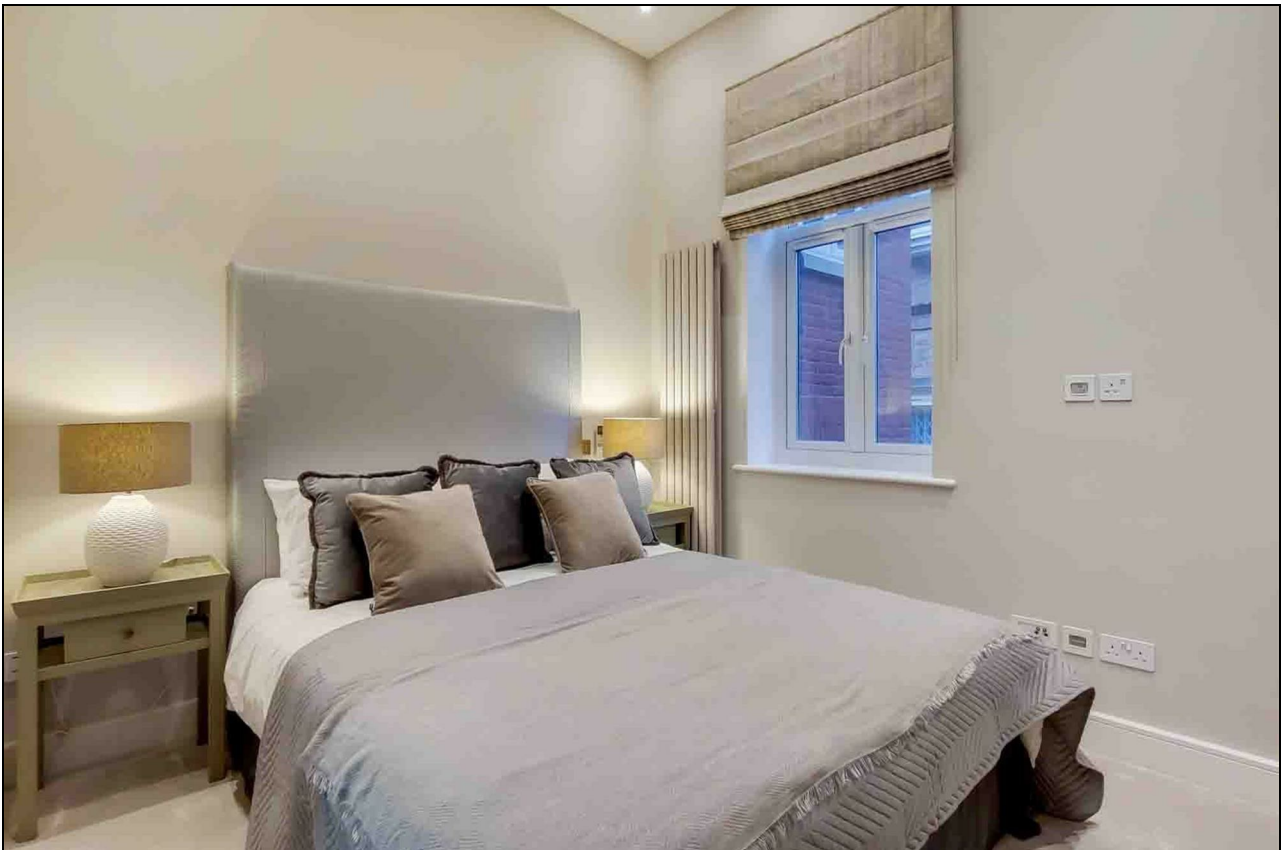
The apartment boasts a bright reception room, modern kitchen, private balcony, bedroom with en suite bathroom, a further guest WC's.

The property is situated within walking distance to Swiss Cottage and Hampstead underground stations, close to all the amenities of Hampstead Village.

EPC Rating: B

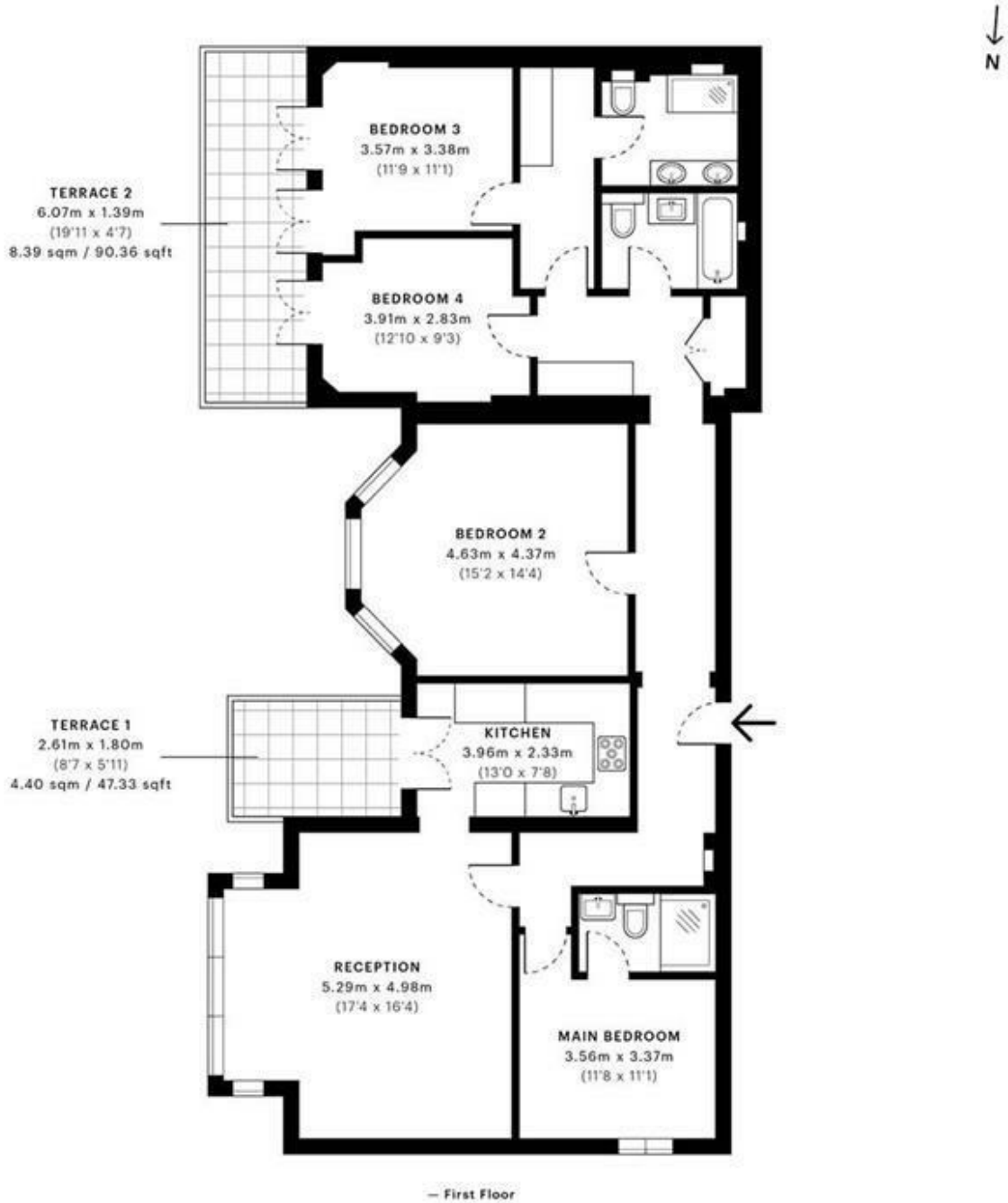
£1,795 Per Week

SOLE AGENT









GROSS INTERNAL AREA (GIA)
The footprint of the property
126.17 sqm / 1358.08 sqft

NET INTERNAL AREA (NIA)
Excludes walls and external features.
Includes washrooms, restricted head height
116.88 sqm / 1258.09 sqft

EXTERNAL STRUCTURAL FEATURES
Balconies, terraces, verandas etc.
12.79 sqm / 137.67 sqft

RESTRICTED HEAD HEIGHT
Limited use area under 1.5m
0.00 sqm / 0.00 sqft



Spec Verified floor plans are produced in accordance with Royal Institution of Chartered Surveyors' Property Measurement Standards. Plots and gardens are illustrative only and excluded from all area calculations. Due to rounding, numbers may not add up precisely. All measurements shown for the individual room lengths and widths are the maximum points of measurements captured in the scan.

IPMS 3B RESIDENTIAL 140.09 sqm / 1507.92 sqft
IPMS 3C RESIDENTIAL 131.40 sqm / 1414.38 sqft

spec id: 5f352c7b352000dbc977968