



TK International
020 7794 8700
www.t-k.co.uk

Residential Sales
Residential Lettings
Property Management

Sales Office:
9 Heath Street
Hampstead
London NW3 6TP
E: sales@t-k.co.uk

Lettings Office:
16-18 Heath Street
Hampstead
London NW3 6TE
E: lettings@t-k.co.uk

tk.international
TK International
TK International

Est.
1998



West Heath Gardens Hampstead NW3

Situated on this discrete and peaceful cul-de-sac, a bright, lateral and beautifully remodelled and extended detached five bedroom house offered in good decorative condition throughout, with landscaping to the rear and front gardens to finish off this striking home.

The interior finish, particularly to the kitchen and bathrooms, is to a very high standard, with intelligent house systems including Lutron lighting and Sonos.

The house provides accommodation over three floors, including an impressive 33' x 25' kitchen/dining/family room (leading directly out onto the rear 46'7 x 45' south-west facing garden), reception room, study, utility room and guest WC on the ground floor. A large principal bedroom suite with en-suite bathroom & dressing room plus two further bedroom suites on the first floor and another two double bedrooms and a family bathroom on the second floor.

The house is set back from the road behind a driveway which can comfortably accommodate three/four cars.

West Heath Gardens is located close to Finchley Road with its excellent transport connections, bus routes and convenience shopping. In addition, the vast and beautiful open spaces of both Golders Hill Park and West Heath are but a five minute walk away.

NB: The front & rear exteriors are computer generated images.

EPC Rating: C
Council Tax Band: G

£3,000 Per Week

SOLE AGENT







West Heath Gardens, NW3

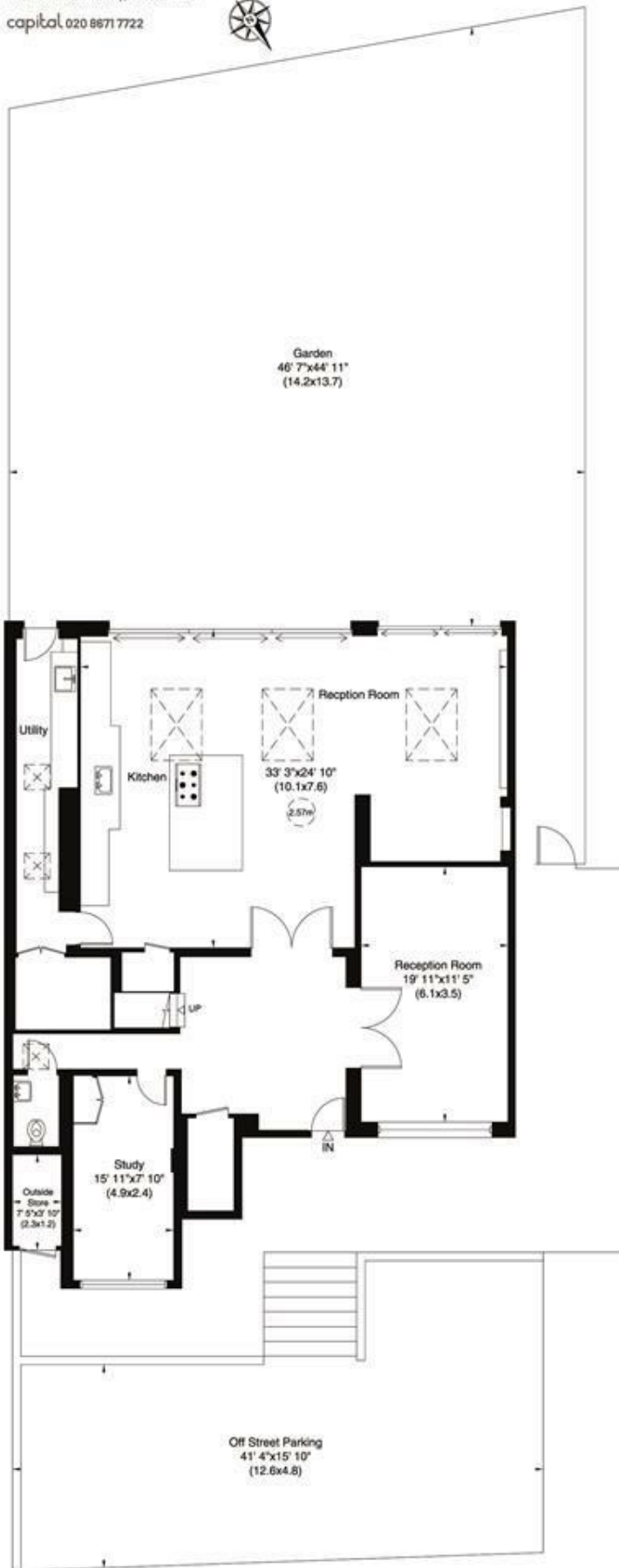
Gross internal area (approx.)

303 Sq m (3265 Sq ft) Including Under 1.5m, Under Eaves and Outside Store

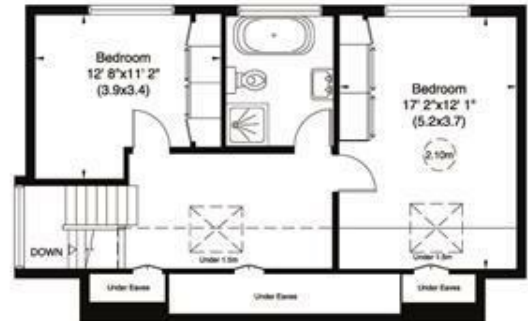
287 Sq m (3089 Sq ft) Excluding Under 1.5m, Under Eaves and Outside Store

For identification only, Not to Scale

capital 020 8871 7722



Ground Floor



Second Floor



First Floor