



TK International  
020 7794 8700  
www.t-k.co.uk

Residential Sales  
Residential Lettings  
Property Management

Sales Office:  
9 Heath Street  
Hampstead  
London NW3 6TP  
E: sales@t-k.co.uk

Lettings Office:  
16-18 Heath Street  
Hampstead  
London NW3 6TE  
E: lettings@t-k.co.uk

 tk.international  
 TK International  
 TK International



## **Redington Gardens Hampstead NW3**

This stunning end-of-terrace house boasts five bedrooms and is offered in excellent condition. Situated at the end of the terrace, it offers privacy and ample space. The highlight of this property is its private wrap-around garden, featuring a luxurious swimming pool and a charming summer house, perfect for relaxing and entertaining.

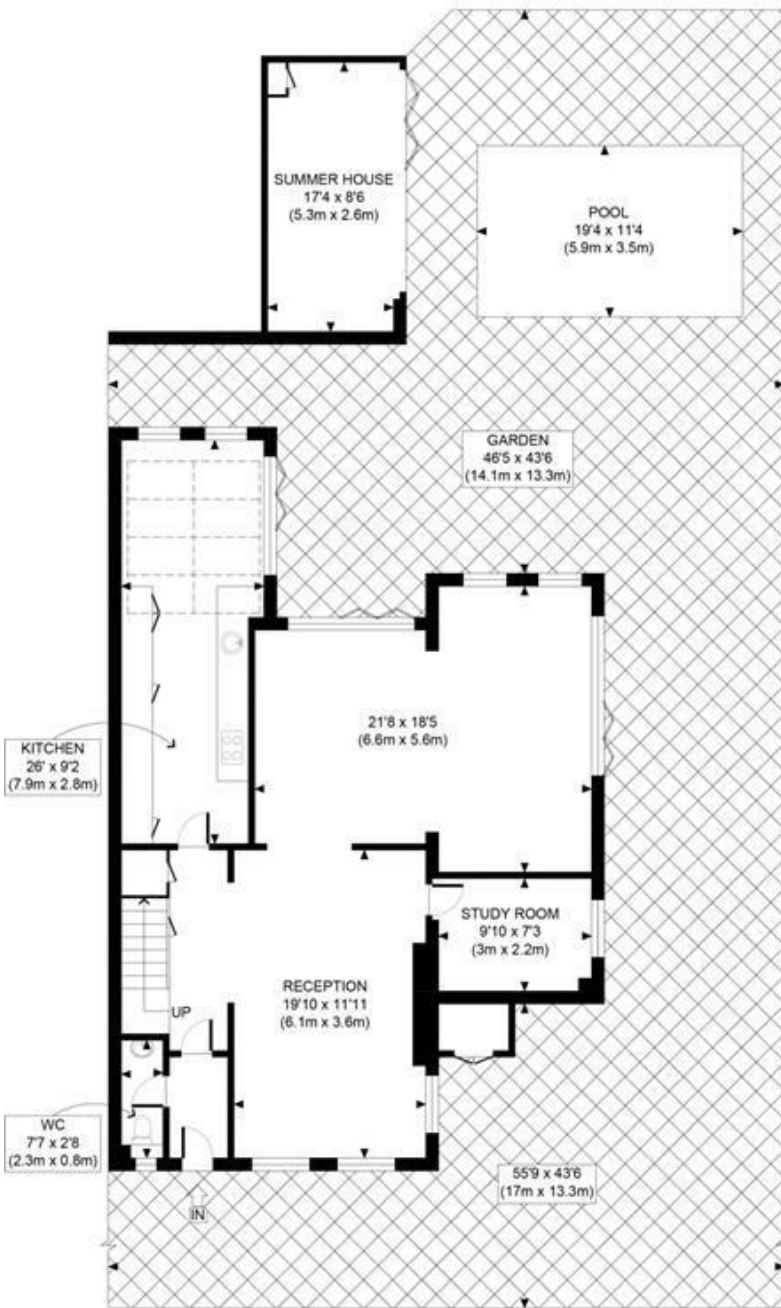
Inside, the house features a state-of-the-art German kitchen, complete with sleek quartz worktops. Bi-folding doors seamlessly connect the kitchen and living area to the outdoor space, blurring the lines between indoor and outdoor living and allowing for plenty of natural light to flood the interiors.

Council Tax Band: Camden (G)

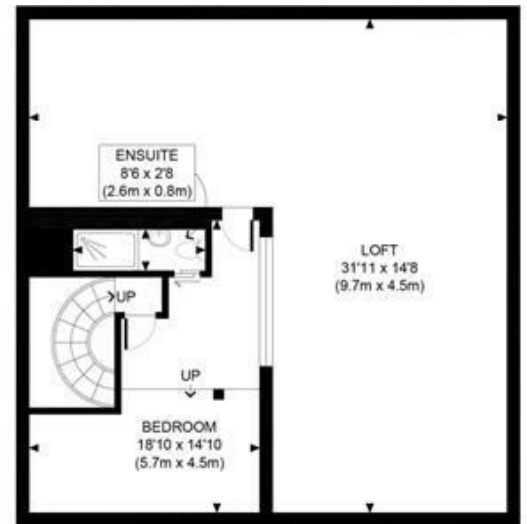
EPC Rating: D

**£16,500 Per Month**





GROUND FLOOR  
GROSS INTERNAL  
FLOOR AREA 1054 SQ FT



SECOND FLOOR  
GROSS INTERNAL  
FLOOR AREA 981 SQ FT



FIRST FLOOR  
GROSS INTERNAL  
FLOOR AREA 961 SQ FT

APPROX. GROSS INTERNAL FLOOR AREA WITH LOFT 2996 SQ FT / 278 SQM  
 APPROX. GROSS INTERNAL FLOOR AREA WITHOUT LOFT 2294 SQ FT / 213 SQM  
 APPROX. GROSS INTERNAL FLOOR AREA WITH SUMMER HOUSE 3143 SQ FT / 292 SQM  
 APPROX. GROSS INTERNAL FLOOR AREA WITHOUT SUMMER HOUSE 2996 SQ FT / 278 SQM  
 Ref. Copyright photoption

Disclaimer: Floor plan measurements are approximate and are for illustrative purposes only.  
 While we do not doubt the floor plan accuracy and completeness, you or your advisors should  
 conduct a careful, independent investigation of the property in respect of monetary valuation.