



TK International  
020 7794 8700  
www.t-k.co.uk

Residential Sales  
Residential Lettings  
Property Management

Sales Office:  
9 Heath Street  
Hampstead  
London NW3 6TP  
E: sales@t-k.co.uk

Lettings Office:  
16-18 Heath Street  
Hampstead  
London NW3 6TE  
E: lettings@t-k.co.uk

tk.international  
 TK International  
 TK International

Est.  
1998



## Netherhall Gardens Hampstead NW3

A superb three/four bedroom garden maisonette occupying the raised and garden level of this Victorian red brick house, located on a quiet and desirable tree lined road just south of Hampstead Village.

The property features stunning interiors including a Poggenpohl kitchen, partial under-floor heating and bespoke design features whilst retaining outstanding period cornicing and fireplaces.

The bright accommodation includes 42 ft double length reception room with direct access to the private west facing garden (56 ft), master bedroom with en-suite bathroom, two further bedrooms, family bathroom, study/4th bedroom and utility room.

Netherhall Gardens is ideally situated for the many reputable schools in the area, and provides convenience for Hampstead Village (Northern Line) and the extensive shopping facilities and public transport connections of Finchley Road (Jubilee & Metropolitan Lines).

**£2,750,000**

**Leasehold**











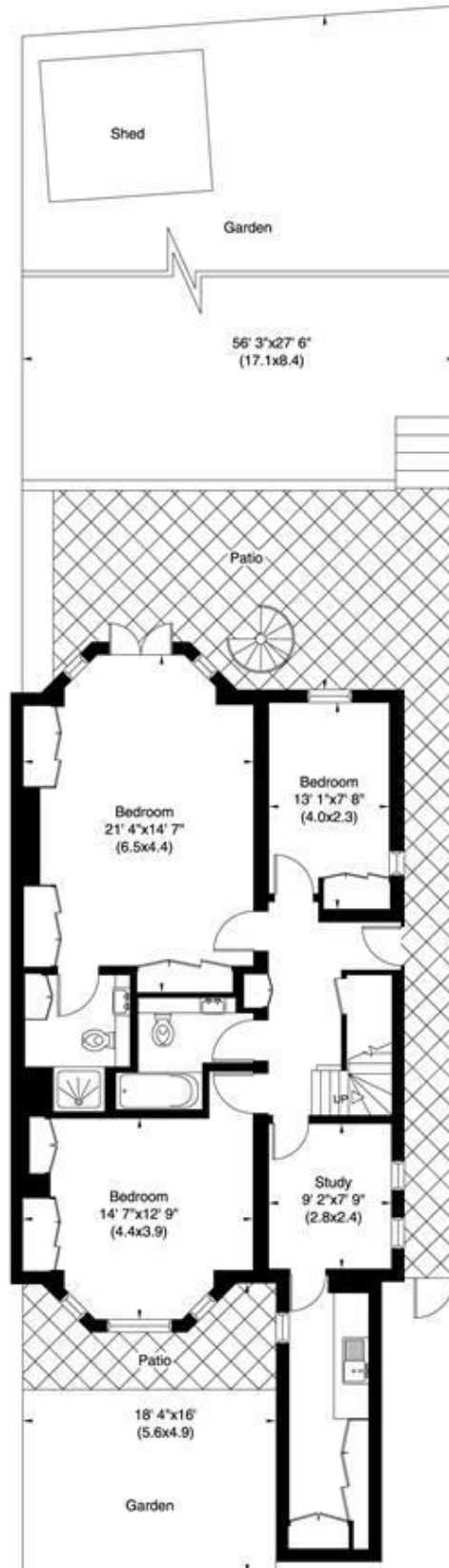






# NETHERHALL GARDENS LONDON NW3

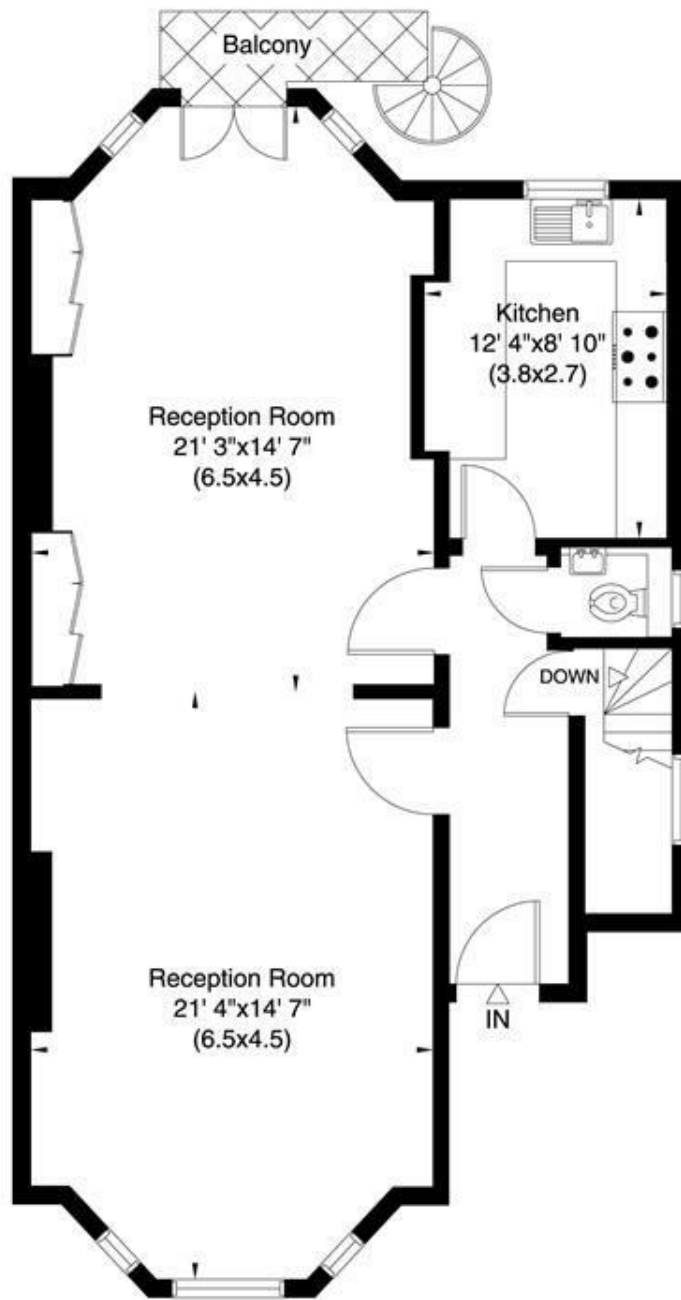
Gross Internal Area: 166 Sq. metres  
1792 Sq.feet



Garden Level  
(Not to scale)

# NETHERHALL GARDENS LONDON NW3

Gross Internal Area: 166 Sq. metres  
1792 Sq. feet



Upper Ground Floor  
(Not to scale)