



TK International
020 7794 8700
www.t-k.co.uk

Residential Sales
Residential Lettings
Property Management

Sales Office:
9 Heath Street
Hampstead
London NW3 6TP
E: sales@t-k.co.uk

Lettings Office:
16-18 Heath Street
Hampstead
London NW3 6TE
E: lettings@t-k.co.uk

tk.international
TK International
TK International



Fitzjohns Avenue Hampstead NW3

A stunning two bedroom, newly refurbished apartment in excellent condition with new ceramic tiles throughout the kitchen and reception, wooden flooring in the bedrooms and access to a large communal garden. The apartment is ideally located near Hampstead Village & close access to the Northern & Jubilee Line.

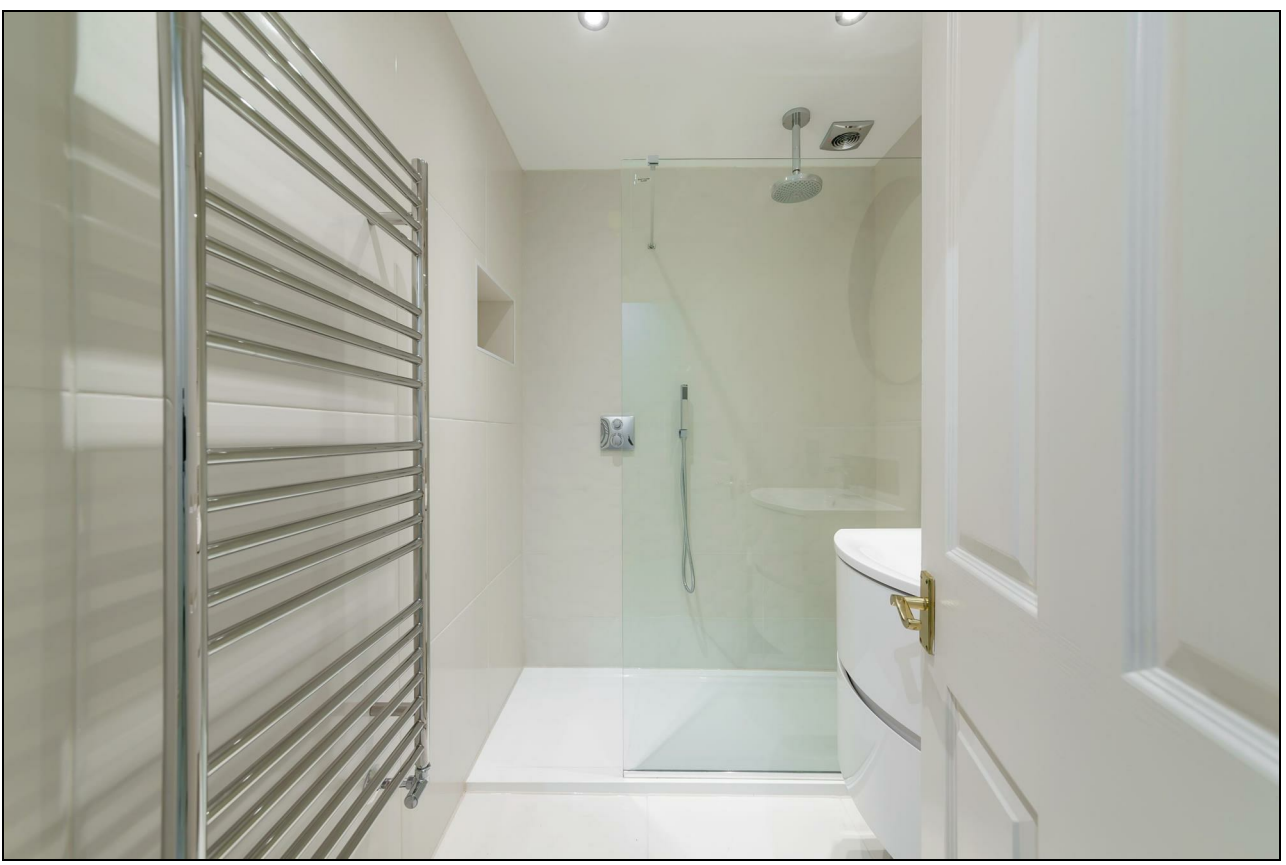
EPC Rating: C

£692 Per Week

SOLE AGENT

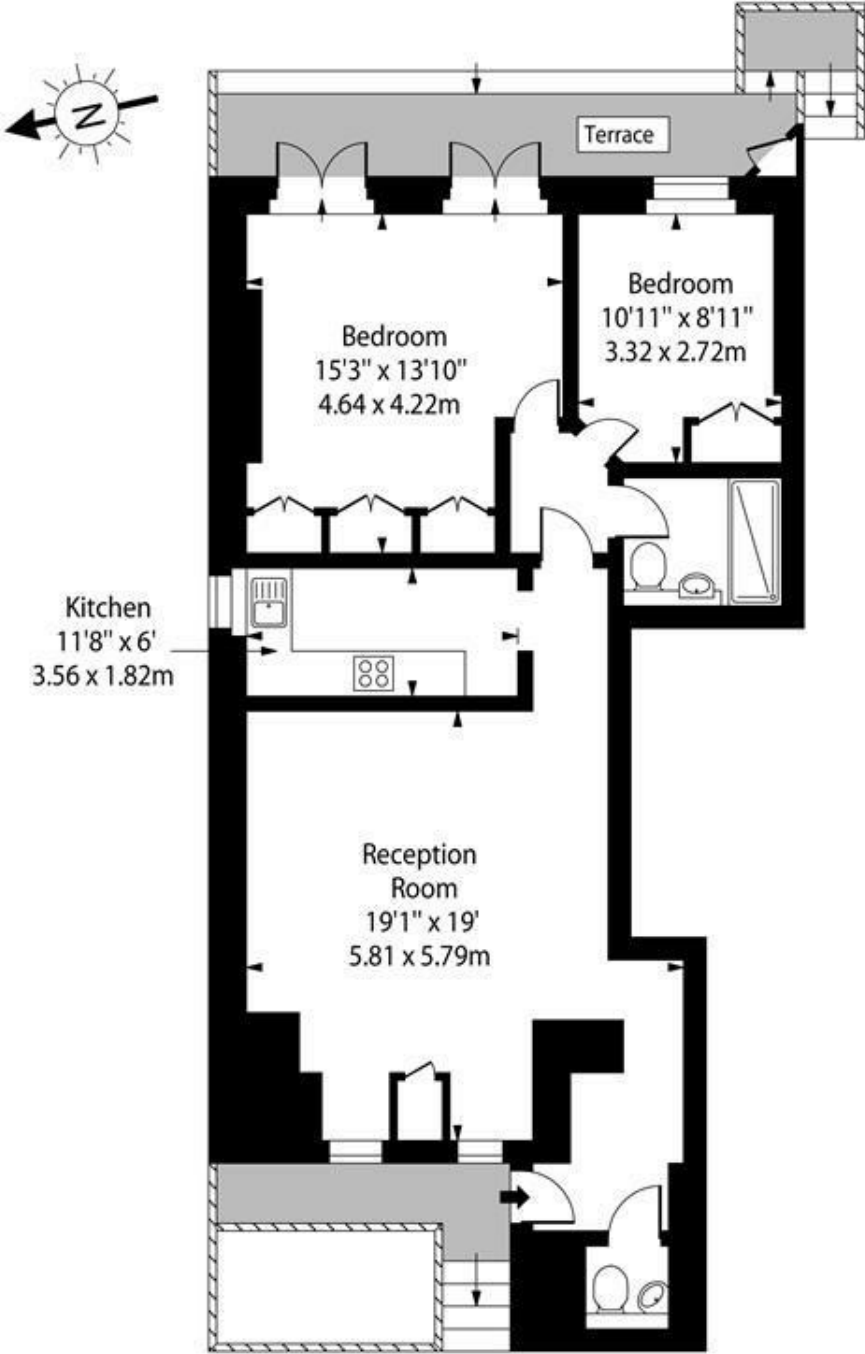








Fitzjohns Avenue, NW3



Lower Ground Floor

Approx Gross Internal Area 811 Sq Ft - 75.35 Sq M

For Illustration Purposes Only - Not To Scale Floor Plan by www.nogaphotostudio.com Ref: No.40891

This floor plan should be used as a general outline for guidance only. Any intending purchaser or lessee should satisfy themselves by inspection, searches, enquiries and full survey as to the correctness of each statement. Any areas, measurements or distances quoted are approximate and should not be used to value a property or be the basis of any sale or let.