



TK International
020 7794 8700
www.t-k.co.uk

Residential Sales
Residential Lettings
Property Management

Sales Office:
9 Heath Street
Hampstead
London NW3 6TP
E: sales@t-k.co.uk

Lettings Office:
16-18 Heath Street
Hampstead
London NW3 6TE
E: lettings@t-k.co.uk

 tk.international
 TK International
 TK International

Est.
1998



Pattison Road Hampstead NW2

Forming one of a terrace of three newly built, strikingly contemporary houses, discretely located within a gated mews off Pattison Road on the lower western slopes of Hampstead, is this bright four storey four bedroom, mid-terrace family home which has been built and finished to an exacting standard.

This house offers 2,183 sq ft of internal accommodation arranged over four floors. The lower ground provides a 23'7"x14'5" master suite including sitting area, walk in wardrobe and en-suite bathroom, plus a separate utility/plant room. The ground floor offers a large open-plan kitchen/dining family room with doors onto a south facing secluded private patio garden. This floor also offers a cloaks cupboard and guest WC.

The first floor has a double bedroom, separate family bathroom and sitting room, and the top floor provides a further large guest bedroom with en-suite bathroom, plus an informal roof terrace. There is also a sun-trap balcony located at first floor level.

Each house has a dedicated parking space and there is a bin store area. All the public transport amenities, convenience shopping and cafes of the Finchley Road are located 100 meters around the corner.

£6,500 Per Month

SOLE AGENT



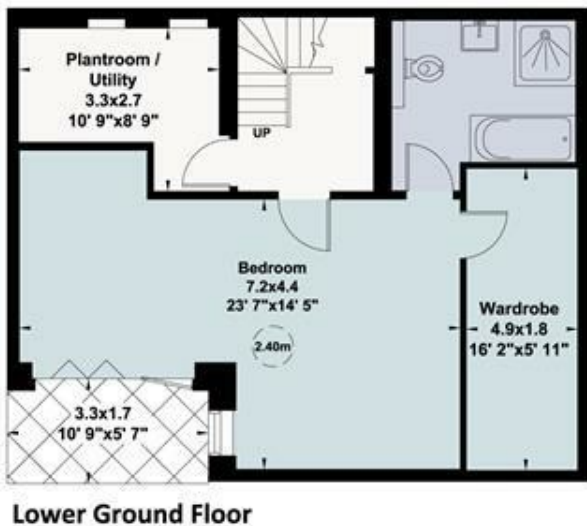
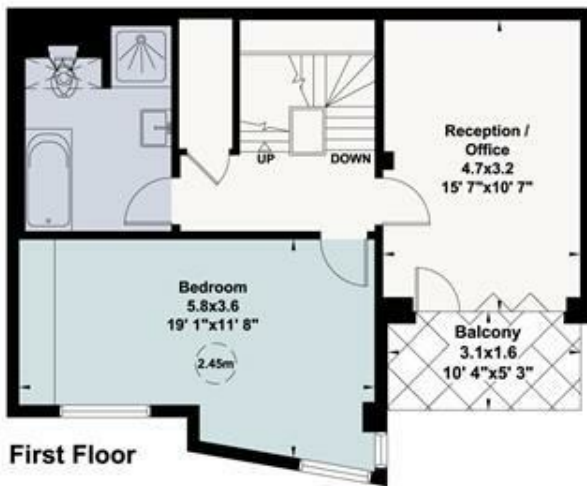




Coachworks Mews, NW2

Gross internal area (approx.)
 203 Sq m (2183 Sq ft) Including Under Eaves
 199 Sq m (2138 Sq ft) Excluding Under Eaves
 Outside Space (approx.)
 48 Sq m (522 Sq ft)
 For identification only, Not to Scale

capital 020 8671 7722



Not to scale, for guidance only and must not be relied upon as a statement of fact. All measurements and areas are approximate only (and have been prepared in accordance with the current edition of the RICS Code of Measuring Practice).