



TK International
020 7794 8700
www.t-k.co.uk

Residential Sales
Residential Lettings
Property Management

Sales Office:
9 Heath Street
Hampstead
London NW3 6TP
E: sales@t-k.co.uk

Lettings Office:
16-18 Heath Street
Hampstead
London NW3 6TE
E: lettings@t-k.co.uk

tk.international
TK International
TK International

Est.
1998



West Heath Avenue Golders Green NW11

Entered via a private front facing entrance of a well regarded portered mansion block, a three bedroom, two bathroom lateral apartment with a private patio garden, and the benefit of off street parking.

The apartment spans 1,121 sq ft (104 sq m) and comprises generously proportioned accommodation throughout, including a 25'7 x 20'9 semi open-plan kitchen/reception room and a spacious conservatory, which provides direct access to the private garden.

West Heath Avenue is a desirable tree lined residential road, enviably located, just moments from Golders Hill Park and Golders Green Underground Station (Northern Line), in addition to the many popular shops and restaurants in the area.

OIEO £800,000

Joint Sole Agent

Leasehold





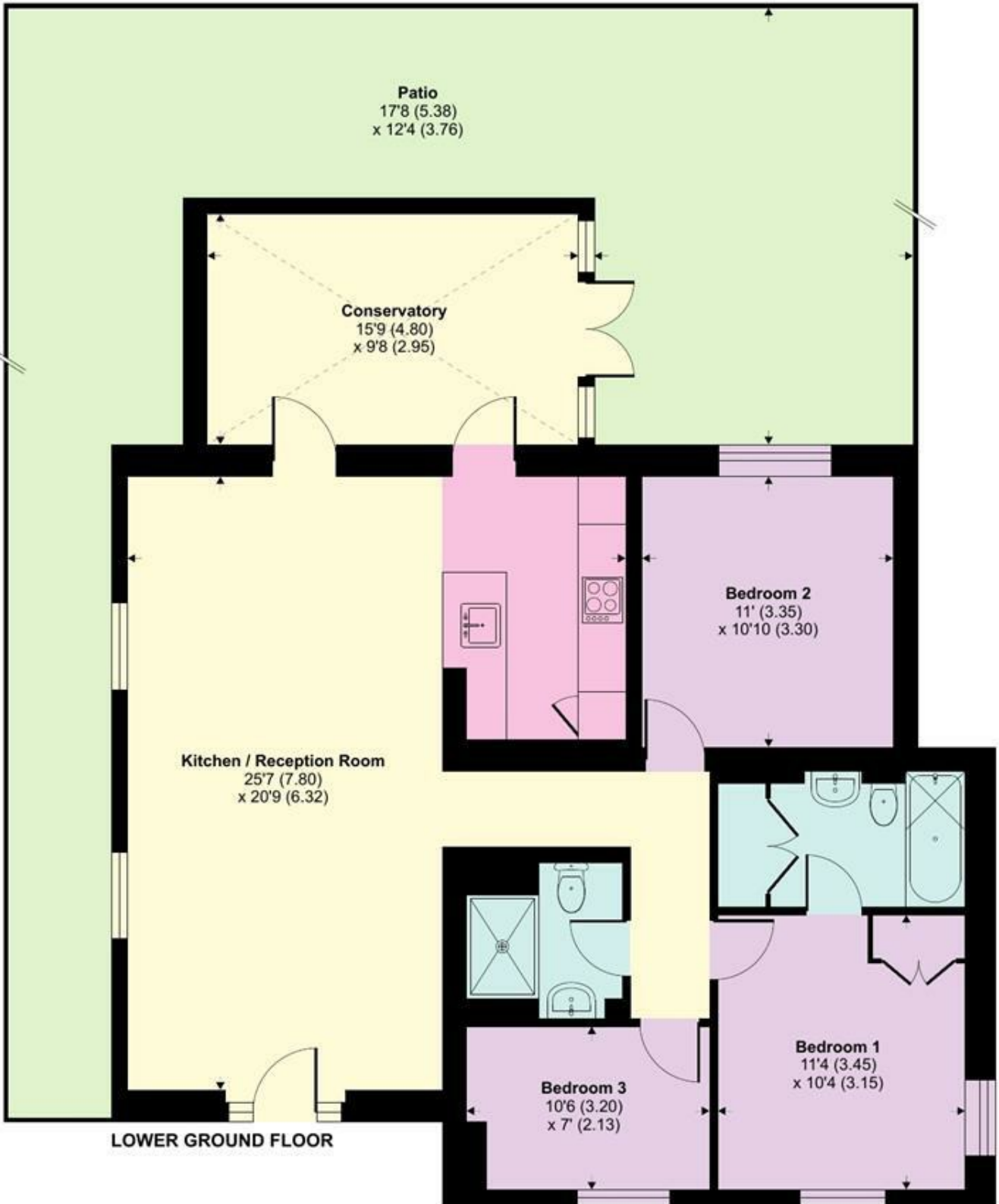




West Heath Avenue, Golders Green, NW11

Approximate Area = 1121 sq ft / 104.1 sq m

For identification only - Not to scale



LOWER GROUND FLOOR



Floor plan produced in accordance with RICS Property Measurement Standards incorporating International Property Measurement Standards (IPMS2 Residential). © nichecom 2024. Produced for TK (Hampstead) Ltd. REF: 1080337