



TK International  
020 7794 8700  
www.t-k.co.uk

Residential Sales  
Residential Lettings  
Property Management

Sales Office:  
9 Heath Street  
Hampstead  
London NW3 6TP  
E: sales@t-k.co.uk

Lettings Office:  
16-18 Heath Street  
Hampstead  
London NW3 6TE  
E: lettings@t-k.co.uk

tk.international  
TK International  
TK International

Est.  
1998



## West Heath Avenue Golders Green NW11

Entered via a private front facing entrance of a well regarded portered mansion block, a three bedroom, two bathroom lateral apartment with a private patio garden, and the benefit of off street parking.

The apartment spans 1,121 sq ft (104 sq m) and comprises generously proportioned accommodation throughout, including a 25'7 x 20'9 semi open-plan kitchen/reception room and a spacious conservatory, which provides direct access to the private garden.

West Heath Avenue is a desirable tree lined residential road, enviably located, just moments from Golders Hill Park and Golders Green Underground Station (Northern Line), in addition to the many popular shops and restaurants in the area.

**£850,000**

**Joint Sole Agent**

**Leasehold**





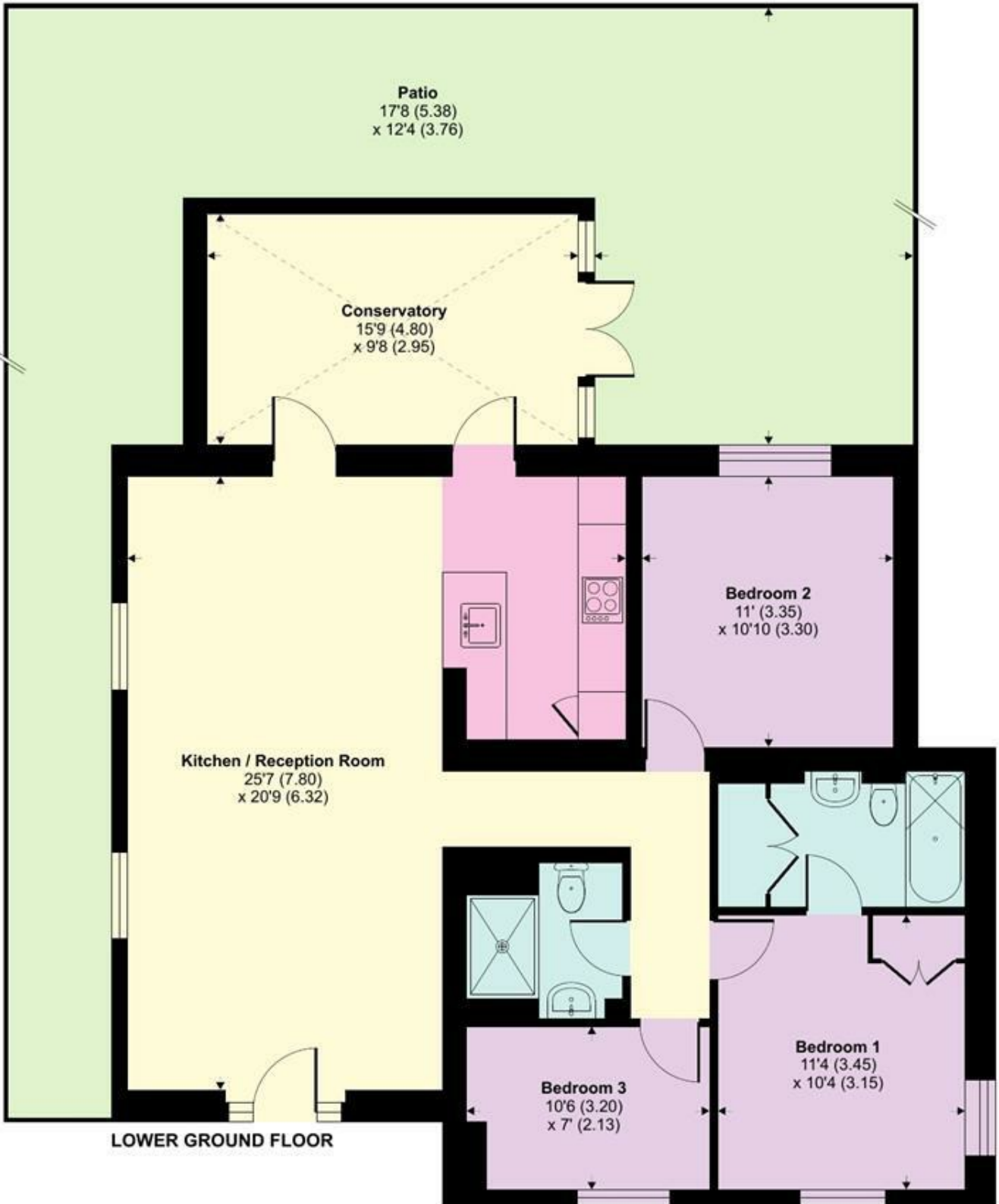




# West Heath Avenue, Golders Green, NW11

Approximate Area = 1121 sq ft / 104.1 sq m

For identification only - Not to scale



LOWER GROUND FLOOR



Floor plan produced in accordance with RICS Property Measurement Standards incorporating International Property Measurement Standards (IPMS2 Residential). © nichecom 2024. Produced for TK (Hampstead) Ltd. REF: 1080337