



TK International
020 7794 8700
www.t-k.co.uk

Residential Sales
Residential Lettings
Property Management

Sales Office:
9 Heath Street
Hampstead
London NW3 6TP
E: sales@t-k.co.uk

Lettings Office:
16-18 Heath Street
Hampstead
London NW3 6TE
E: lettings@t-k.co.uk

tk.international
TK International
TK International

Est.
1998



West Heath Drive Golders Hill Park NW11

A beautifully presented semi-detached four/five bedroom family house, situated in this sought-after road and with the benefit of off street parking for two/three cars.

The ground floor accommodation is ideal for entertaining and provides a large bay fronted reception room and a 25' x 22'11 open-plan kitchen/dining room with a separate family room to the rear with bi-fold doors leading to a 61' west facing rear garden.

The first floor boasts a wonderful 21' principal bedroom with dressing area & en-suite bathroom, a large second double bedroom, playroom/bedroom 3 and a family bathroom. The second floor offers two further double bedrooms, a second family bathroom and a large utility room.

The house is conveniently located within a short walk of the vast green acres of Golders Hill Park as well as the shops, restaurants and cafes of Golders Green. The Northern Line underground station and wide choice of buses are also within walking distance.

£2,950,000

SOLE AGENT

Freehold













West Heath Drive NW11

Gross internal area (approx.)

294 Sq m (3163 Sq ft) Including Under eaves and under 1.5m

284 Sq m (3059 Sq ft) Excluding Under eaves and under 1.5m

For identification only, Not to Scale



Ground Floor



First Floor



Second Floor

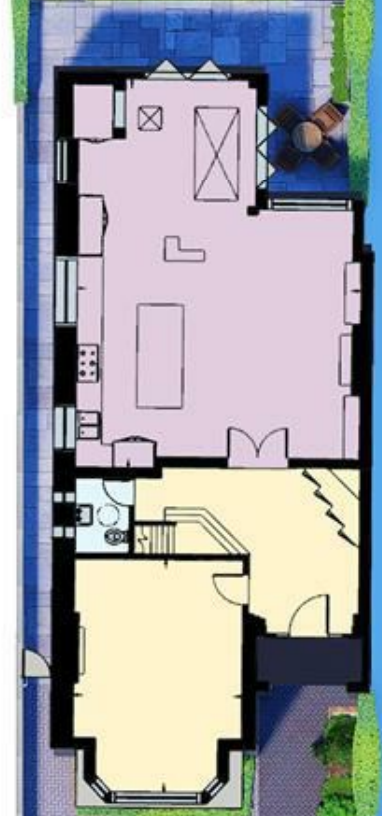
Not to scale, for guidance only and must not be relied upon as a statement of fact. All measurements and areas are approximate only (and have been prepared in accordance with the current edition of the RICS Code of Measuring Practice).

www.virtuallours.london

West Heath Drive NW11



Garden
61' 8" x 30' 5"
(18.8 x 9.26)



Drive
18' 7" x 30' 5"
(5.66 x 9.26)



www.virtualtours.london

Not to scale, for guidance only and must not be relied upon as a statement of fact. All measurements and areas are approximate only (and have been prepared in accordance with the current edition of the RICS Code of Measuring Practice).