



TK International
020 7794 8700
www.t-k.co.uk

Residential Sales
Residential Lettings
Property Management

Sales Office:
9 Heath Street
Hampstead
London NW3 6TP
E: sales@t-k.co.uk

Lettings Office:
16-18 Heath Street
Hampstead
London NW3 6TE
E: lettings@t-k.co.uk

tk.international
TK International
TK International

Est.
1998



West Heath Road Hampstead NW3

This very charming three bedroom, two bathroom ground floor apartment offers approx. 1,050 sq ft of wonderfully spacious living and entertaining space with generously proportioned rooms throughout, and forms part of a beautifully maintained Mock-Tudor style double-fronted detached residence.

One of the property's main highlights is its vast private terrace, which provides an idyllic spot to relax and enjoy the view of the impressive landscaped communal garden. The property also enjoys the added convenience of off-street parking.

Upon entering the apartment, you'll be greeted with a spacious and central hallway that serves as a separate reception area, primarily used as a dining room. The apartment further comprises a 16' master bedroom with ensuite bathroom, two further bedrooms, a family shower room, a separate modern kitchen and a wonderful 18'10" x 16'9" family room with a large bay, which provides direct access to the substantial terrace.

West Heath Road is a sought after residential address, ideally situated for the expansive green areas of Hampstead Heath and Golders Hill Park and within easy reach of a plethora of trendy boutiques, restaurants and cafes in neighboring Hampstead Village and Golders Green. There are several bus routes conveniently located on Finchley Road and Golders Green Underground Station (Northern Line) is within walking distance.

£1,095,000

SOLE AGENT

Leasehold









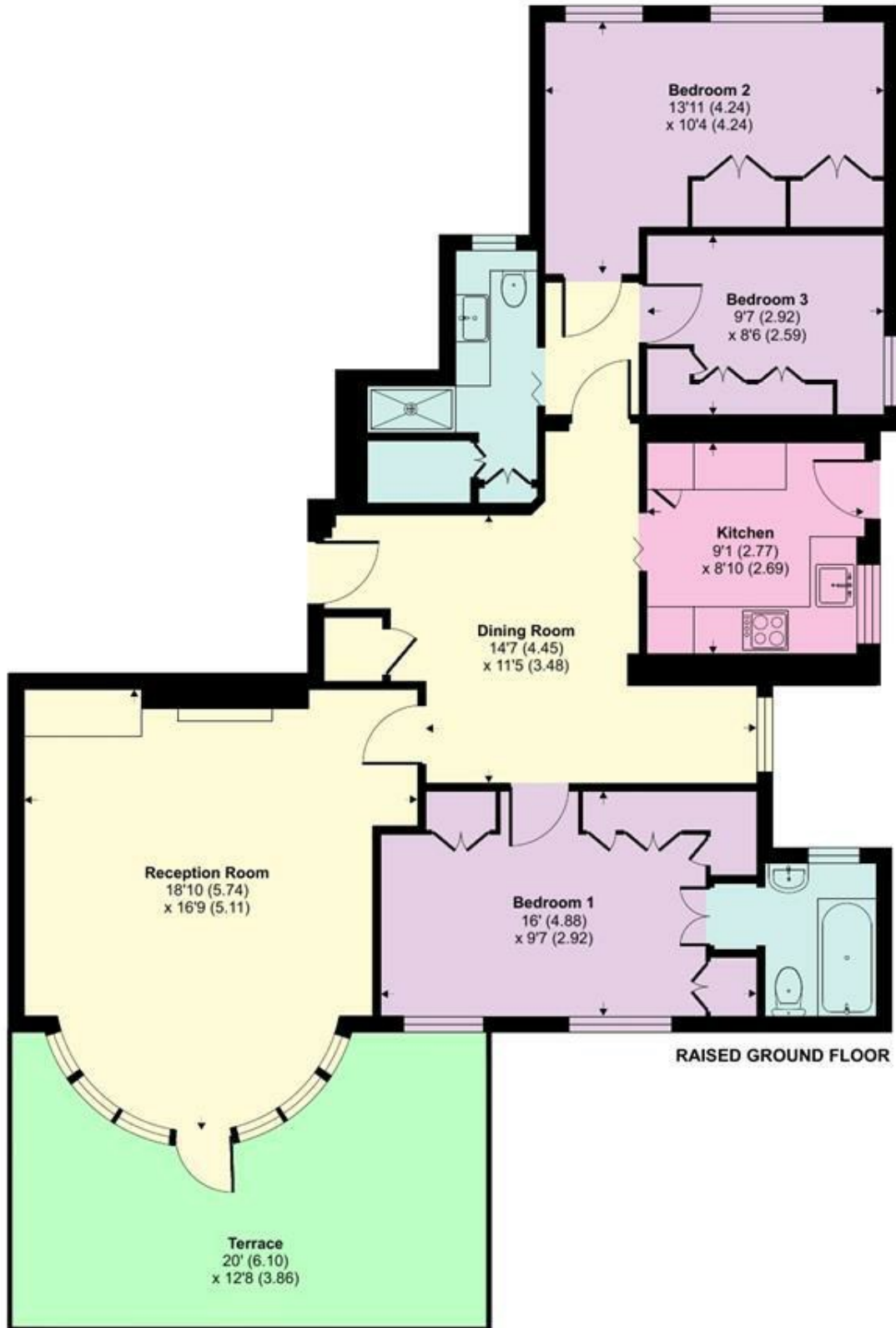




West Heath Road, Hampstead, NW3

Approximate Area = 1044 sq ft / 96.9 sq m

For identification only - Not to scale



RAISED GROUND FLOOR



Floor plan produced in accordance with RICS Property Measurement Standards incorporating International Property Measurement Standards (IPMS2 Residential). © nichecom 2023. Produced for TK (Hampstead) Ltd. REF: 955489