



TK International
020 7794 8700
www.t-k.co.uk

Residential Sales
Residential Lettings
Property Management

Sales Office:
9 Heath Street
Hampstead
London NW3 6TP
E: sales@t-k.co.uk

Lettings Office:
16-18 Heath Street
Hampstead
London NW3 6TE
E: lettings@t-k.co.uk

 tk.international
 TK International
 TK International

Est.
1998



Lindfield Gardens London NW3

A magnificent 3/4 bedroom duplex apartment with a lovely private terrace and garden set in this Edwardian period conversion on the ground and lower ground floors, situated in an excellent location, a short walk to the shops and restaurants of Hampstead Village (Northern Line) and walking distance to Finchley Road & Frognal Overground Station.

The property benefits from a magnificent terrace and garden, balcony high ceilings, wood floors throughout and off street parking for 3 cars. Accommodation comprises ground: magnificent drawing room with original ornamental fireplace and French doors leading to the balcony, 2nd formal reception room also with original features, fully fitted eat in kitchen with direct access to the balcony, study/4th bedroom mezzanine: guest cloakroom, utility room, cloaks cupboard lower ground: master bedroom with doors leading to the private garden with fitted wardrobes and en-suite bathroom, 2nd large double bedroom with en-suite shower room, 3rd double bedroom, family bathroom.

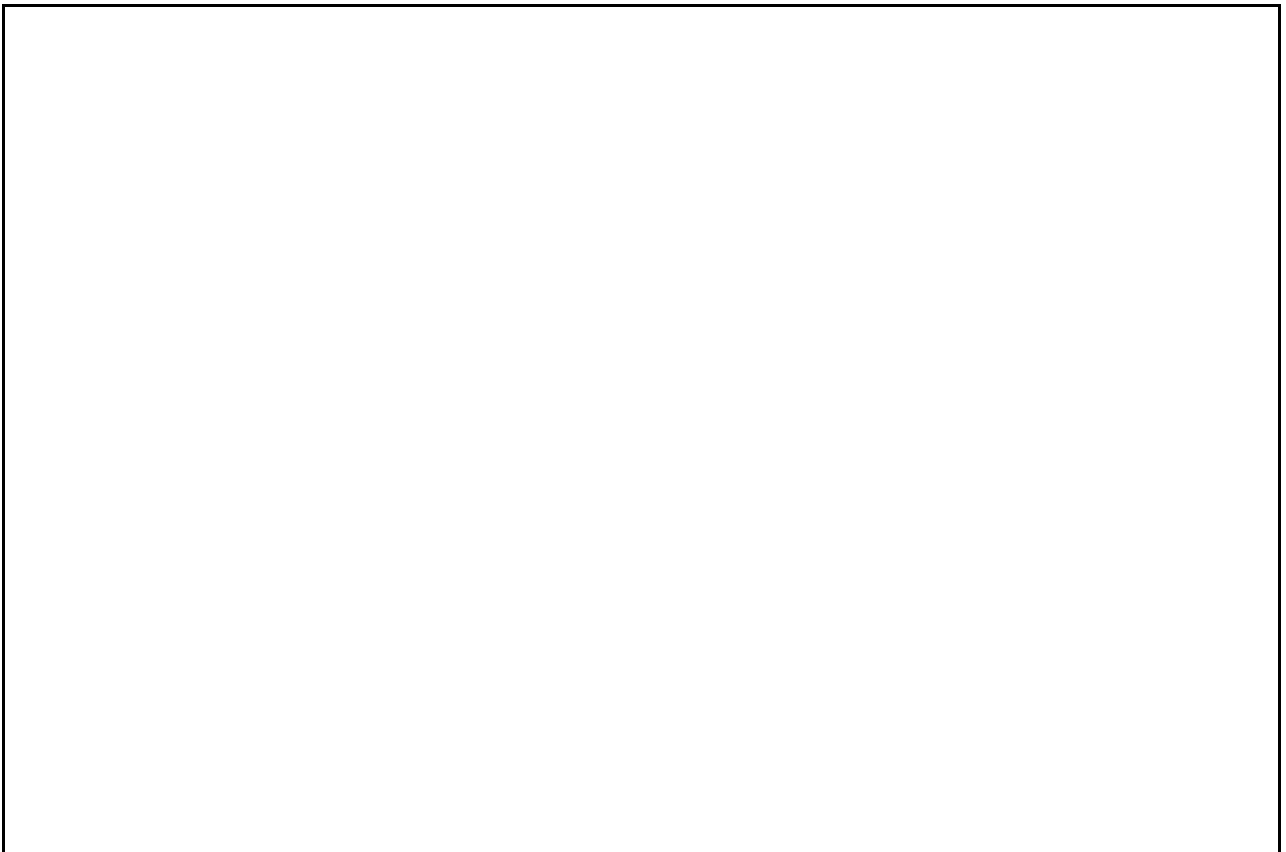
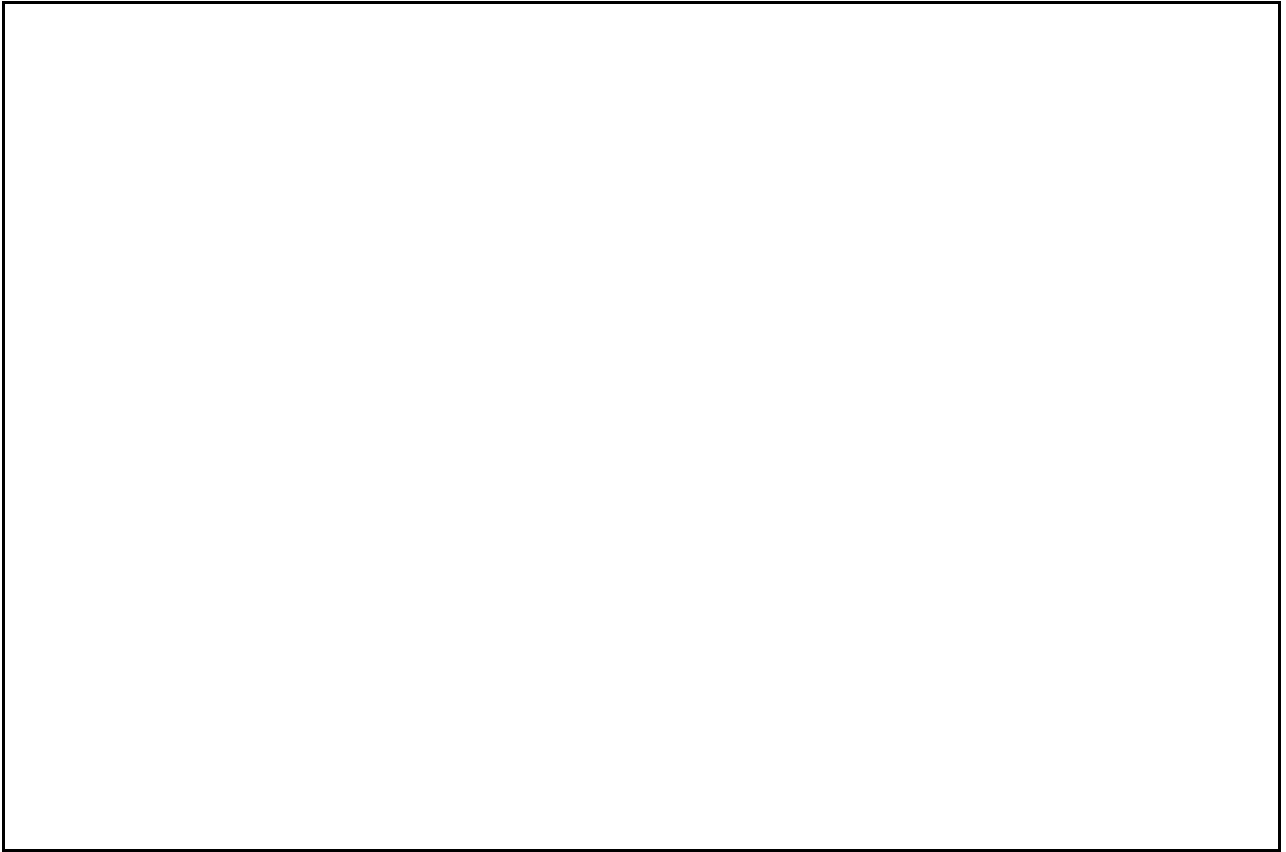
EPC: D

Council Tax Band: G

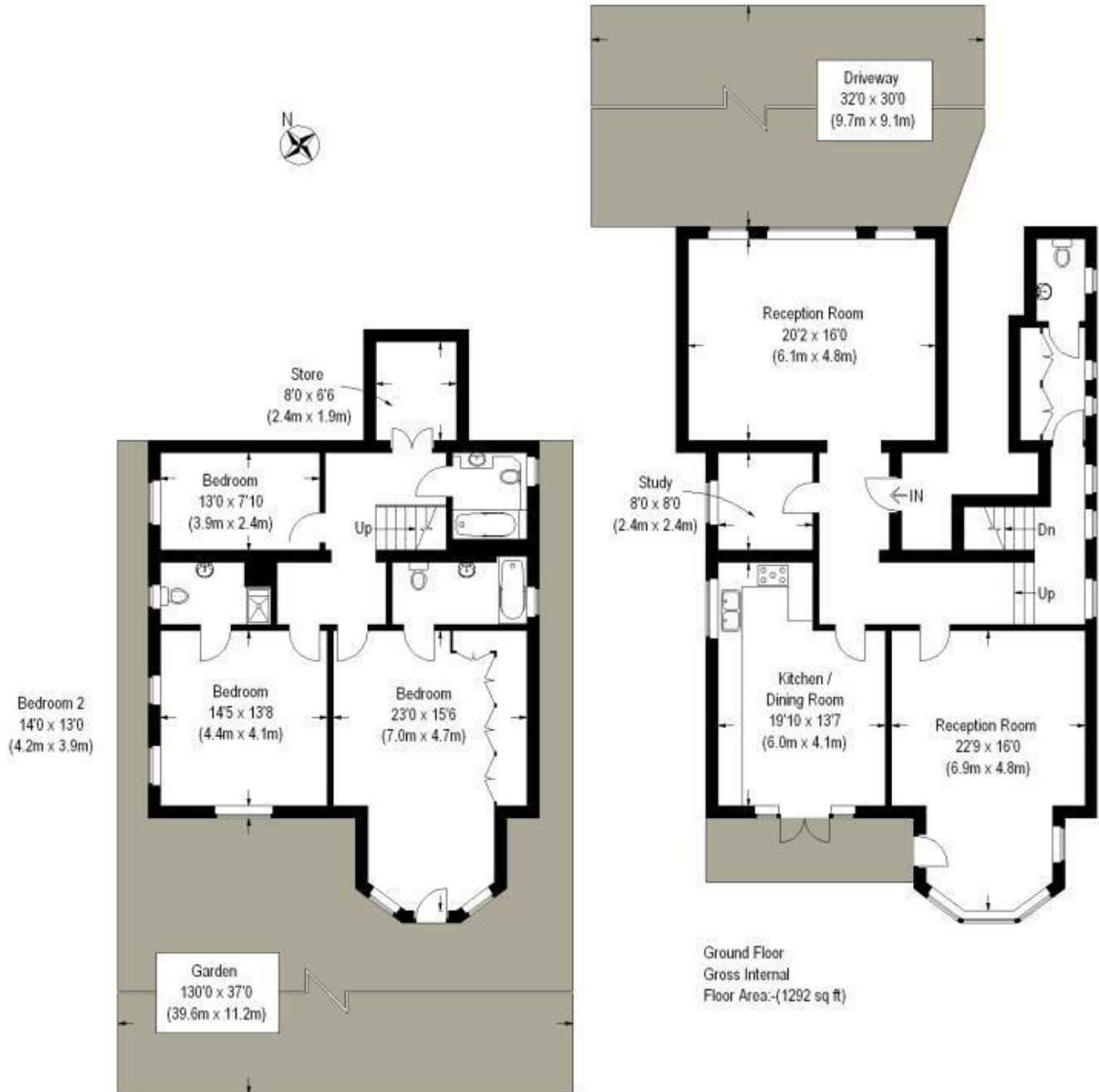
£8,000 Per Month

SOLE AGENT





Approximate Gross Internal Area :-
2293 sq ft / 213 sq m



Lower Ground Floor
Gross Internal
Floor Area:-(1001 sq ft)

For illustrative purposes only.
Not to scale.