



St. Johns Wood Park St John's Wood NW8

An immaculately presented bright and spacious three double bedroom penthouse duplex apartment situated within a gated development offering 24-hour portage.

The apartment comprises a large open plan kitchen/reception room and dining area, two double bedrooms with en suite bathrooms (including 'his and hers' sinks), a further double bedroom, separate shower room, conservatory area and terrace. Further benefits include air conditioning, fitted wardrobes and wooden flooring throughout.

Boydell Court is located within close proximity to the local amenities and underground stations of both Swiss Cottage and St Johns Wood (Jubilee and Metropolitan Lines).

EPC Rating: C

£1,950 Per Week











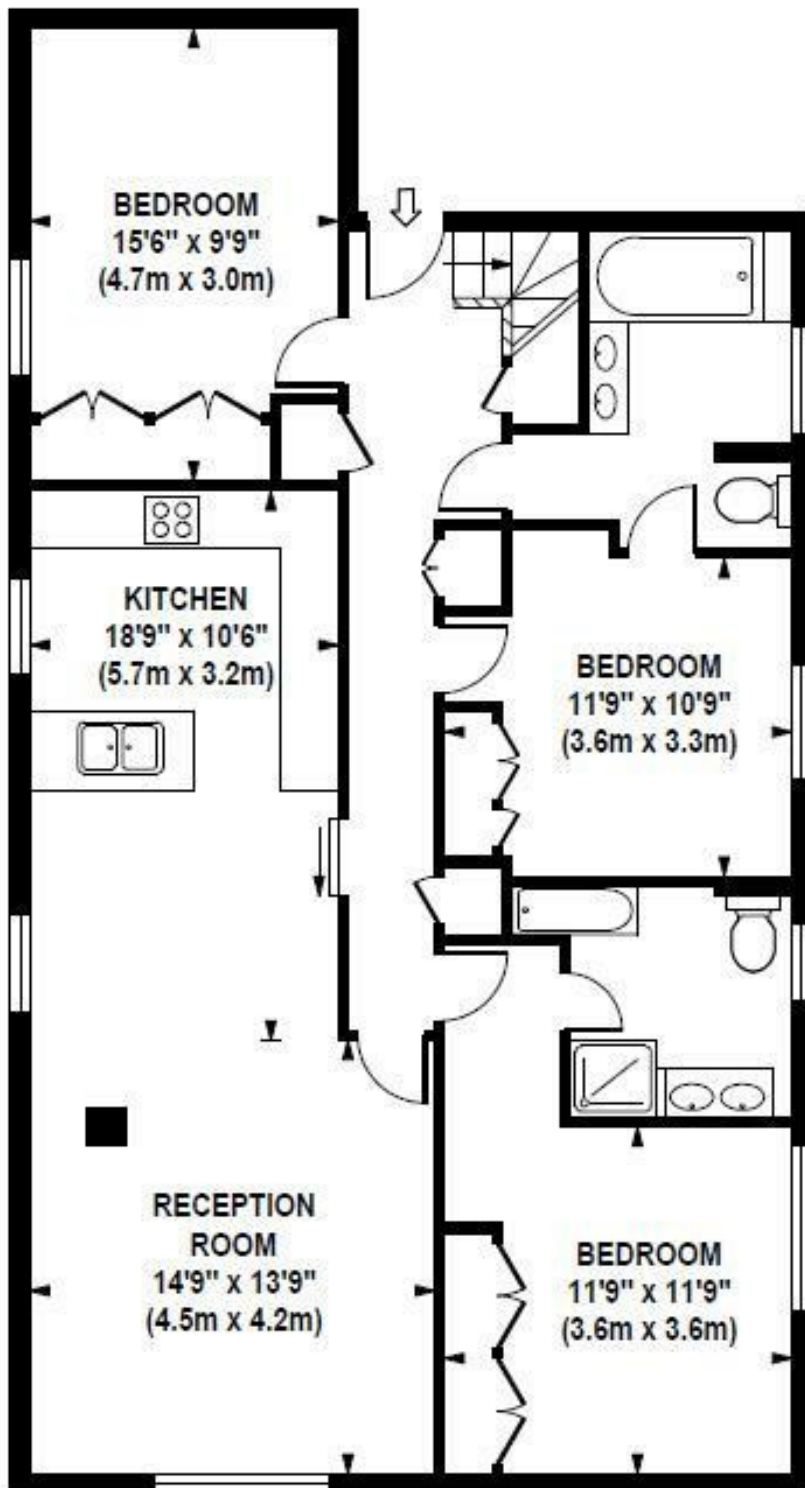




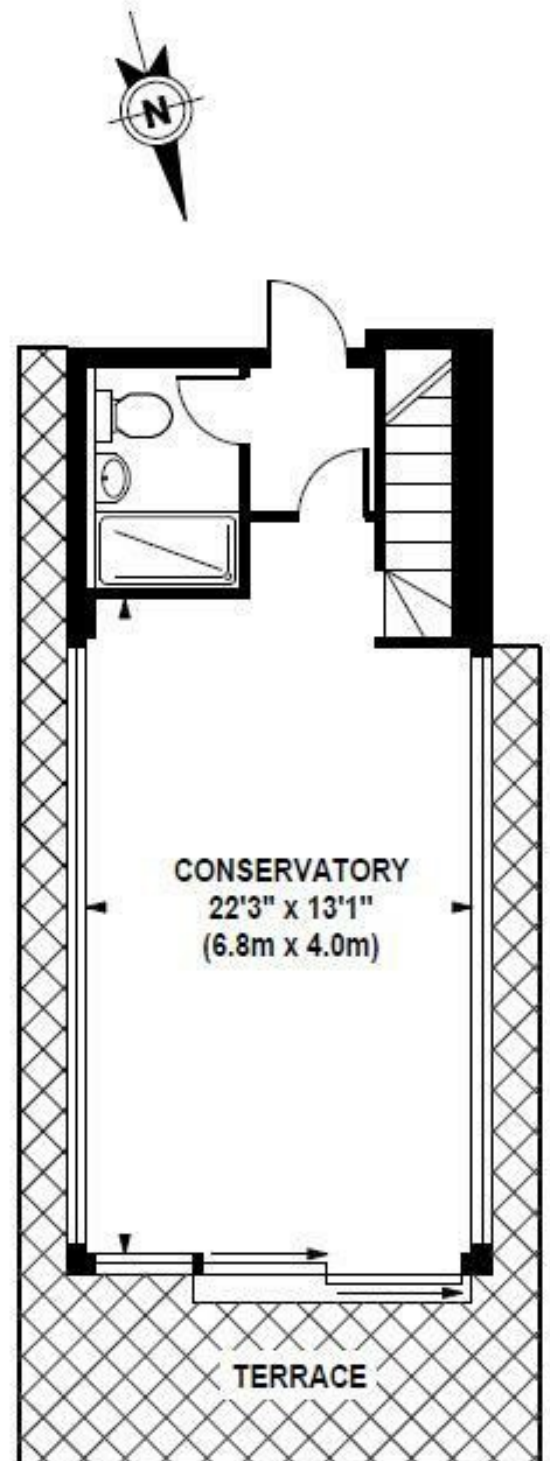


BOYDELL COURT

Approximate Gross Internal Area 1560 sq ft / 144.9 sq m



**TENTH FLOOR
GROSS INTERNAL
FLOOR AREA 1170 SQ FT**



**ELEVENTH FLOOR
GROSS INTERNAL
FLOOR AREA 390 SQ FT**

Although every attempt has been made to ensure accuracy, all measurements are approximate. The floor plan's for illustrative purposes only and not to scale. Measured in accordance to RICS standards.