



TK International  
020 7794 8700  
www.t-k.co.uk

Residential Sales  
Residential Lettings  
Property Management

Sales Office:  
9 Heath Street  
Hampstead  
London NW3 6TP  
E: sales@t-k.co.uk

Lettings Office:  
16-18 Heath Street  
Hampstead  
London NW3 6TE  
E: lettings@t-k.co.uk

tk.international  
TK International  
TK International

Est.  
1998



## Westover Hill Hampstead NW3

An impressive detached six double bedroom house (5,520sq ft / 512sq m), located within this highly desirable gated development on the west side of Hampstead within walking distance to the Heath.

This well proportioned family house offers flexible accommodation and is predominantly arranged over three floors with two large reception rooms, a conservatory, kitchen and study on the ground floor.

The first floor boasts a principal bedroom with a dressing room & en-suite bathroom and four further bedrooms each with an en-suite. The entire second floor also provides one large bedroom with en-suite bathroom.

The lower ground floor enjoys a swimming pool, gymnasium, sauna plus a utility room.

The property is further enhanced by an integral double width garage, additional secure parking for 2/3 cars behind electric gates and a lawned westerly facing garden and terrace to the rear.

The extensive facilities of Hampstead Village (Northern Line) and Golders Green (Northern Line) are both within a mile.

**£4,950,000**

**SOLE AGENT**

**Freehold**



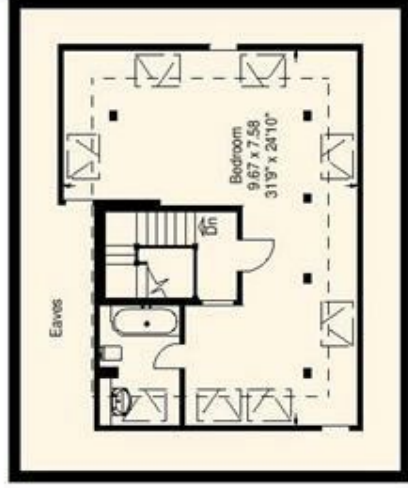






# Westover Hill, Hampstead NW3

Gross internal area (approx):  
512 sq.mts. (5520 sq.ft.) (including garage)  
For identification purposes only. Not to scale.  
Proplan.uk ©



Second floor



First floor