

HJC

HIGHER VALUES



Chadwick Place

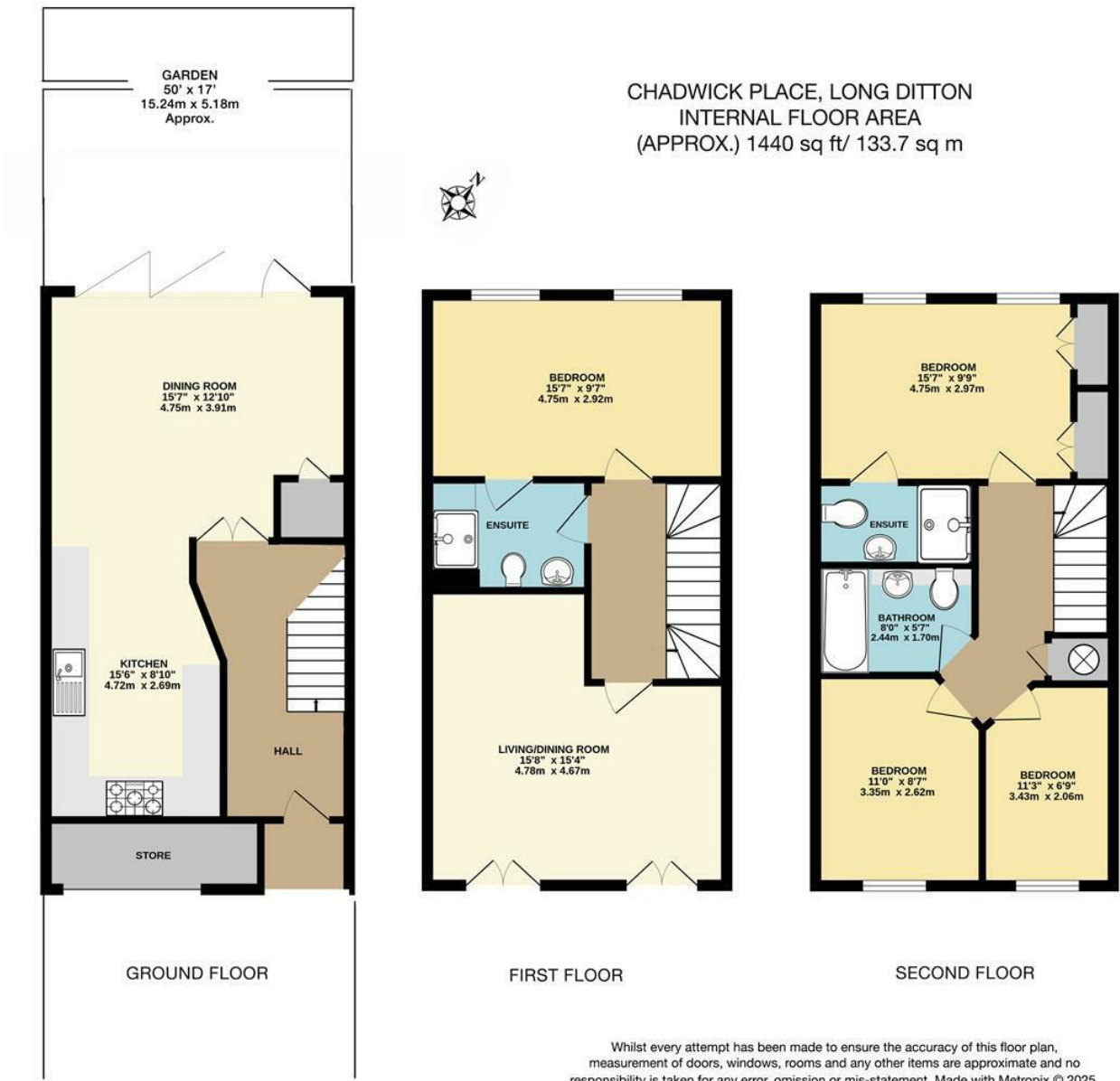
Surbiton, KT6 5RZ

Guide Price £995,000

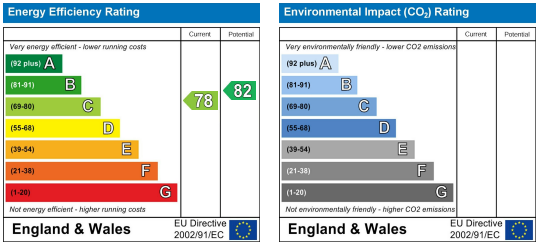
A beautifully presented and unique four bedroom house on the sought after St James development. This wonderful family home has been cleverly arranged with the kitchen off-set from the dining / living room with bi-fold doors opening onto the pretty rear garden. There is also a delightful raised seating area at the rear. Onto the first floor there is a large reception room with double Juliette balcony along with a double bedroom with jack and jill en-suite shower room. The second floor has a further three bedrooms, two of which are doubles and one has an en-suite-shower room and family bathroom. Located in an extremely quiet yet convenient position on the development within close walking distance of Surbiton town centre, mainline train station and the River Thames.

- Sought After St James Development
- Downstairs Kitchen / Dining / Living Room
- Large Reception Room
- Three Bathrooms
- Walking Distance to Surbiton Town Centre
- Quiet Location
- Pretty Garden
- Four Bedrooms
- Off Street Parking
- River Thames and Main Line Station Nearby

Floor Plan



Energy Efficiency Graph



These particulars, whilst believed to be accurate are set out as a general outline only for guidance and do not constitute any part of an offer or contract. Intending purchasers should not rely on them as statements of representation of fact, but must satisfy themselves by inspection or otherwise as to their accuracy. No person in this firms employment has the authority to make or give any representation or warranty in respect of the property.