

HJC

HIGHER VALUES



Flat 3 14 Lovelace Gardens

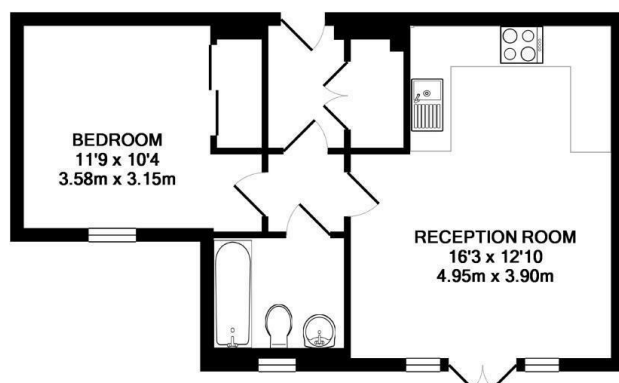
, Surbiton, KT6 6SD

£1,350 Per Calendar Month

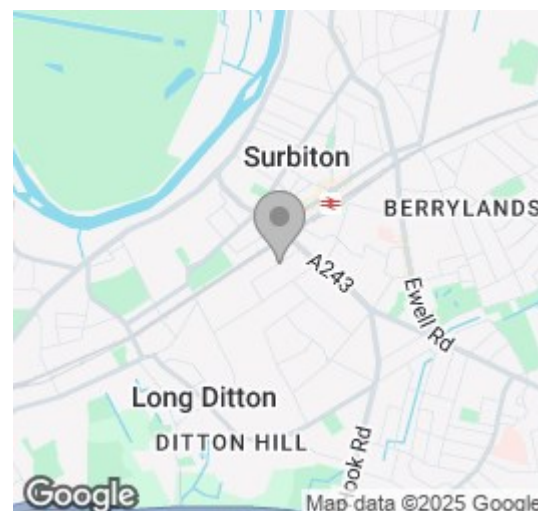


1 1 1 c

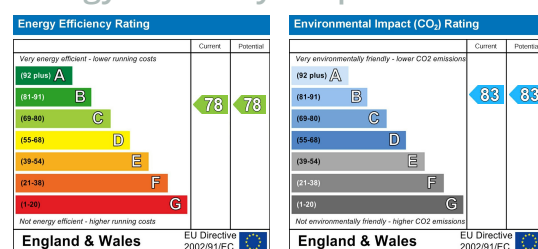
Floor Plan



Area Map



Energy Efficiency Graph



Viewing

Please contact our HJC Surbiton Office on 020 8390 0404 if you wish to arrange a viewing appointment for this property or require further information.

- Ground floor apartment
- Access on to private patio
- Open plan living
- Underfloor heating
- Built in storage
- Off-street parking



Beautifully presented, modern ground floor flat with doors on to a private patio, less than 10 minutes walk from Surbiton station. The property boasts an open kitchen / diner and double bedroom with built-in storage. Both the kitchen and bathroom are fully fitted and finished to an excellent standard. There is temperature controlled under-floor heating throughout the property and parking for one car. Available 1st August. Council Tax Band D.



These particulars, whilst believed to be accurate are set out as a general outline only for guidance and do not constitute any part of an offer or contract. Intending purchasers should not rely on them as statements of representation of fact, but must satisfy themselves by inspection or otherwise as to their accuracy. No person in this firm's employment has the authority to make or give any representation or warranty in respect of the property.