

HJC

HIGHER VALUES



Williams Grove

Surbiton, KT6 5RP

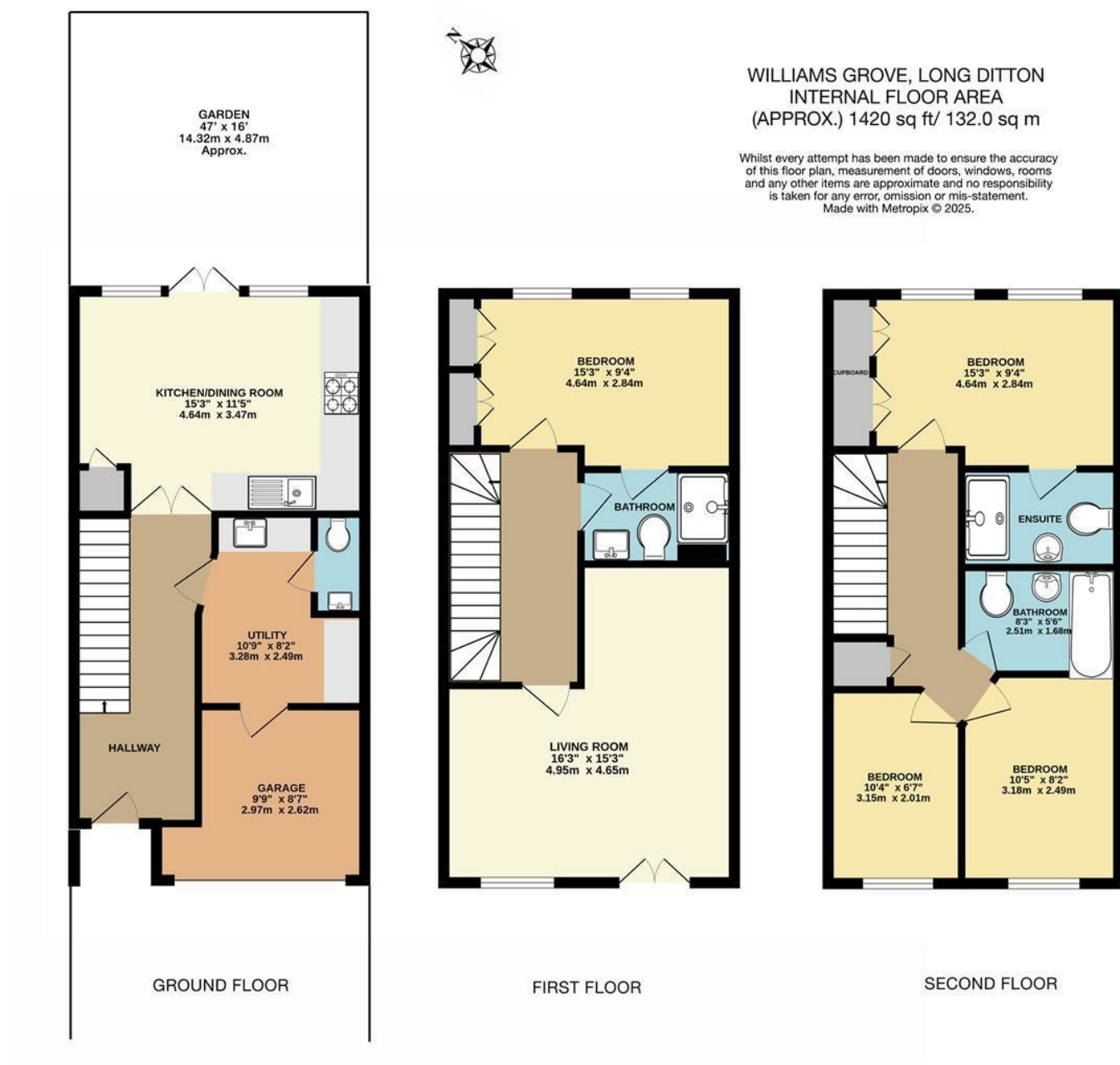
Guide Price £995,000

An immaculately presented four bedroom townhouse located in a quiet cul de sac of the sought after St James development. This beautiful family home offers a modern kitchen with underfloor heating and bi-fold doors opening onto a pretty rear garden. The ground floor is completed with W/C and an essential utility room. Onto the first floor is a generously proportioned family room and double bedroom with an updated ensuite. On the second floor is the primary double bedroom with updated ensuite, a further two bedrooms and a modernised family bathroom. Further advantages include off street parking and additional storage in the garage. The property is located within walking distance of Surbiton town centre, the mainline train station with its fast services to Waterloo and the River Thames.

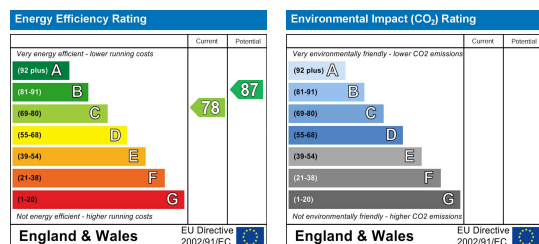
Material Info: Water / Electricity / Sewerage: Mains. Heating: Gas Mains. Broadband: Fibre (FTTC). Mobile Coverage: Indoor: Likely Outdoor: Likely

- Beautifully presented Townhouse
- Kitchen with Bifold Doors
- Utility Room
- Four Bedrooms
- Off Street Parking
- St James Development
- Underfloor Heating
- Downstairs W/C
- Three Updated Bathrooms
- Close to Surbiton Town Centre and Train Station

Floor Plan



Energy Efficiency Graph



These particulars, whilst believed to be accurate are set out as a general outline only for guidance and do not constitute any part of an offer or contract. Intending purchasers should not rely on them as statements of representation of fact, but must satisfy themselves by inspection or otherwise as to their accuracy. No person in this firm's employment has the authority to make or give any representation or warranty in respect of the property.