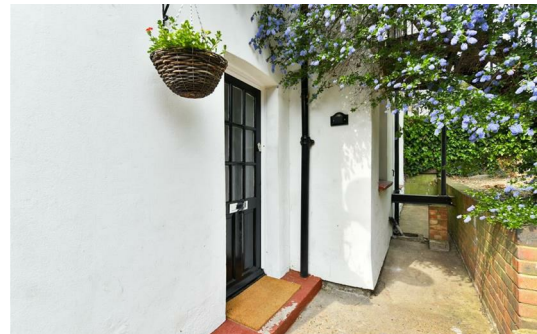


HJC

HIGHER VALUES



St James Road

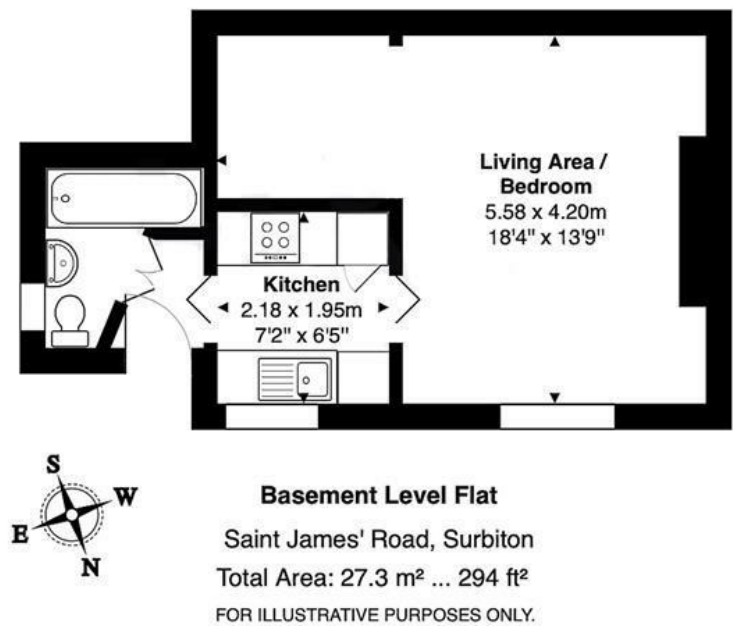
Surbiton, KT6 4QN

£1,175 Per Month

ALL VIEWING SLOTS NOW BOOKED! A wonderful studio apartment, situated in a fantastic location close to Surbiton shops, station and sought after Maple Road. The property benefits from it's own door, small but functional modern kitchen, bathroom and large L-shape room. Steps up to the communal garden. Unfurnished and available mid June! Single occupants only.

- Larger than average studio apartment
- Fantastic location
- Communal garden
- Council tax band B
- Modern kitchen
- Close to Surbiton station
- Available Mid June

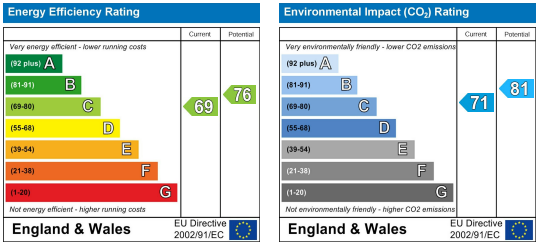
Floor Plan



Whilst every attempt has been made to ensure the accuracy of the floor plan shown, all measurements, positioning, fixtures, features, fittings and any other data shown are an approximate interpretation for illustrative purposes only and are not to scale.

No responsibility is taken for any error, omission, miss-statement or use of data shown.

Energy Efficiency Graph



These particulars, whilst believed to be accurate are set out as a general outline only for guidance and do not constitute any part of an offer or contract. Intending purchasers should not rely on them as statements of representation of fact, but must satisfy themselves by inspection or otherwise as to their accuracy. No person in this firms employment has the authority to make or give any representation or warranty in respect of the property.