

HJC

HIGHER VALUES



2 Lovelace Road

Surbiton, KT6 6NJ

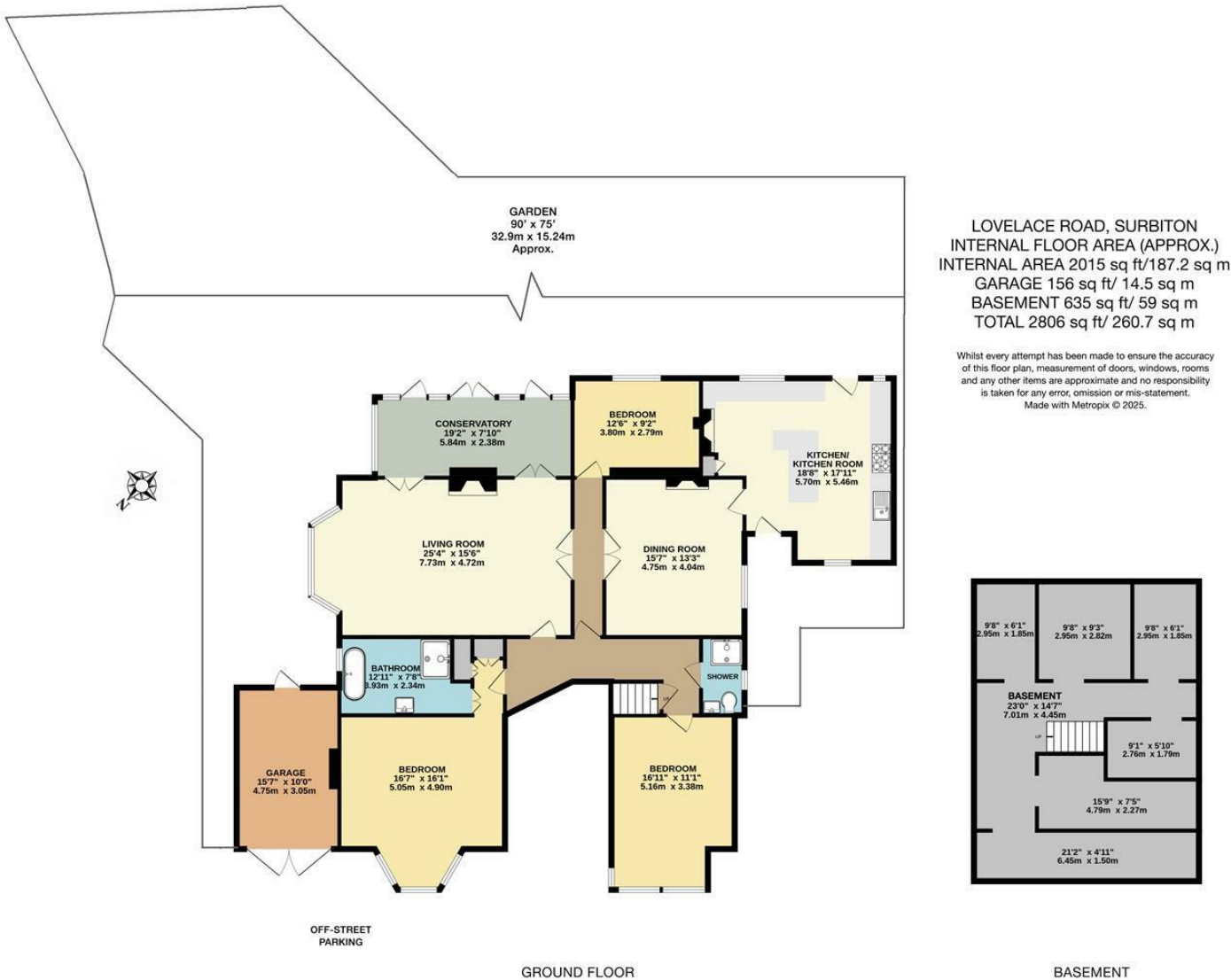
Guide Price

£1,150,000

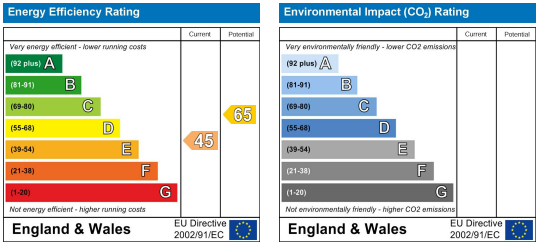
This exceptional three-bedroom Victorian conversion apartment offers a rare combination of grandeur, charm, and practicality. Occupying the entire ground floor of a distinguished period building, it has character throughout including high ceilings, ornate detailing, and generously proportioned rooms. The property is beautifully presented, featuring two elegant reception rooms that provide versatile living spaces, ideal for entertaining. A bright conservatory opening on to a beautiful private garden. The inclusion of cellar adds valuable storage, while a garage ensures convenience for parking or additional space. Located within the heart of Surbiton and close walking distance to excellent schools, Surbiton mainline Station and the River Thames.

- Stunning Character Apartment
- Dining Room
- Three Bedrooms
- Conservatory
- Garage and Parking
- Kitchen Breakfast Room
- Living Room
- Ensuite to Main Bedroom
- Private Rear Garden
- Share Of Freehold

Floor Plan



Energy Efficiency Graph



These particulars, whilst believed to be accurate are set out as a general outline only for guidance and do not constitute any part of an offer or contract. Intending purchasers should not rely on them as statements of representation of fact, but must satisfy themselves by inspection or otherwise as to their accuracy. No person in this firms employment has the authority to make or give any representation or warranty in respect of the property.