

HJC

HIGHER VALUES



Williams Grove

Surbiton, KT6 5RN

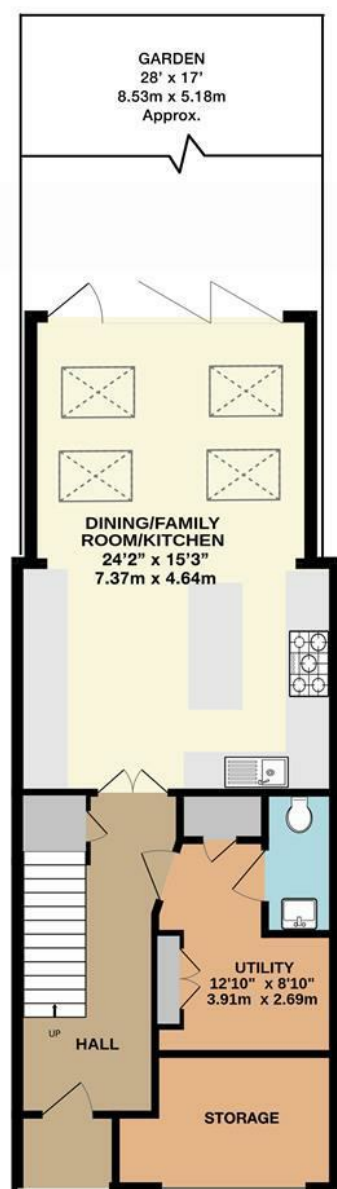
Guide Price

£1,100,000

This stunning and spacious extended town house, situated in the sought-after St James Development, features a fabulous open plan kitchen/breakfast family room with underfloor heating. The bi-fold doors open onto the pretty landscaped rear garden. This space is perfect for family gatherings and entertaining. Additional features include a beautiful first floor reception room, utility room, downstairs wc and storage space, providing practicality and versatility. The property offers multiple bedrooms: a main bedroom with an en-suite, a second double bedroom also with an en-suite, and two further bedrooms. Also, a well-appointed family bathroom on the top floor. The property also benefits from a private driveway, providing convenient parking right at your doorstep. Located within walking distance to the Nuffield Gym, River Thames, and Surbiton Station. Council Tax Band F.

- Prestigious St James Development
- Stunning kitchen/breakfast/family room
- En-suites to both Double Bedrooms
- Utility room
- Close To Surbiton Station
- Extended terrace town house
- Four bedrooms
- Family bathroom
- Downstairs wc
- Off street parking

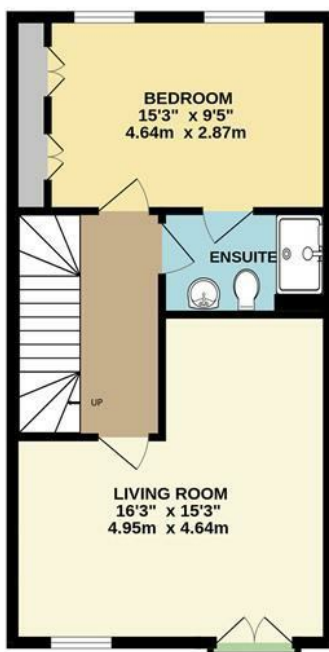
Floor Plan



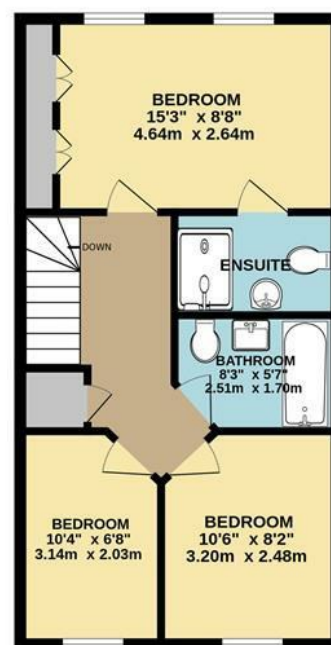
GROUND FLOOR

WILLIAMS GROVE, LONG DITTON
INTERNAL FLOOR AREA (APPROX.) 1605 sq ft/ 149.0 sq m

Whilst every attempt has been made to ensure the accuracy of this floor plan, measurement of doors, windows, rooms and any other items are approximate and no responsibility is taken for any error, omission or mis-statement. Made with Metropix © 2025.

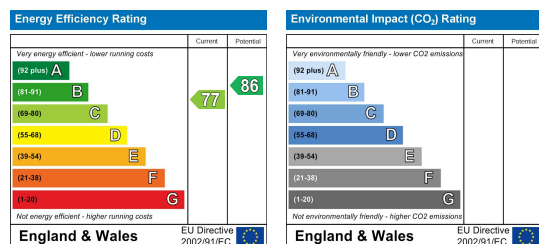


FIRST FLOOR



SECOND FLOOR

Energy Efficiency Graph



These particulars, whilst believed to be accurate are set out as a general outline only for guidance and do not constitute any part of an offer or contract. Intending purchasers should not rely on them as statements of representation of fact, but must satisfy themselves by inspection or otherwise as to their accuracy. No person in this firm's employment has the authority to make or give any representation or warranty in respect of the property.