

HJC

HIGHER VALUES



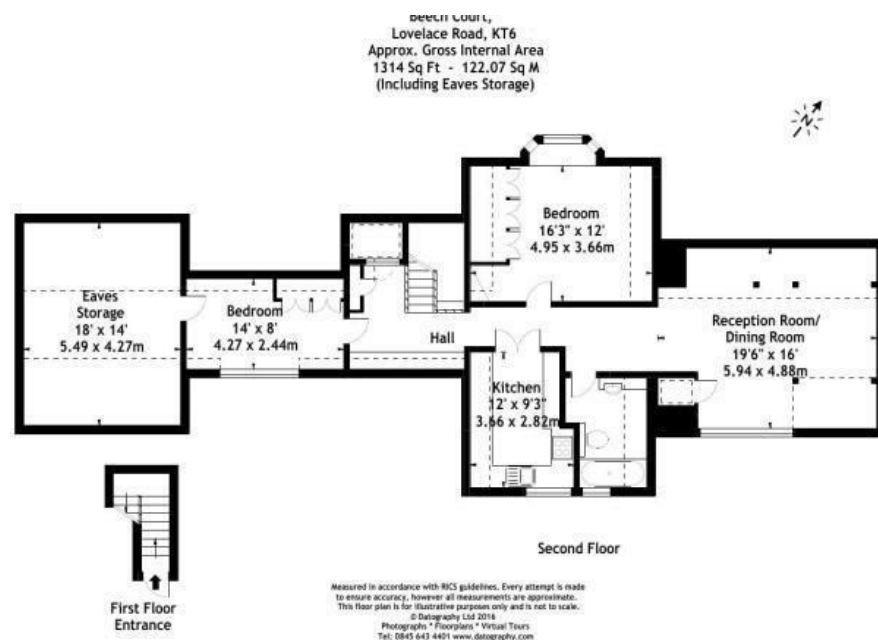
Flat 7 Beech Court 12 Lovelace Road

Surbiton, KT6 6NL

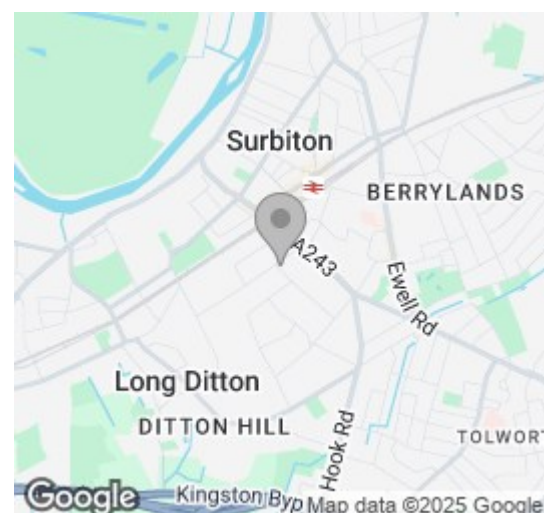
£1,695 PCM

2 1 1 E

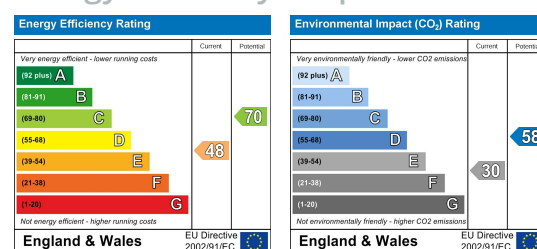
Floor Plan



Area Map



Energy Efficiency Graph



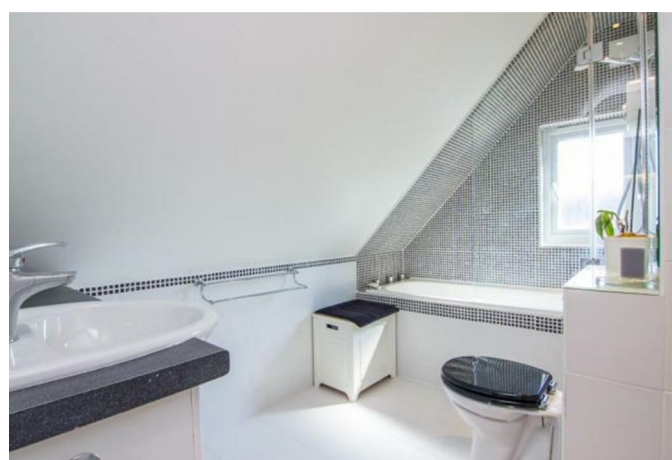
Viewing

Please contact our HJC Surbiton Office on 020 8390 0404 if you wish to arrange a viewing appointment for this property or require further information.

- Conversion apartment
- Modern bathroom
- Great location
- Sorry no students
- Large kitchen
- 2 double bedrooms
- Available end of June
- Council tax band D



Situated within this imposing detached Edwardian building in the popular Lovelace area, close to the train station, is this quirky top floor apartment. Boasting a large living space, the property compromises a stunning living room and dining area, a modern eat-in kitchen with integrated appliances, luxury bathroom and two bedrooms with good storage space. Offered unfurnished, available end of June. Sorry no students.



These particulars, whilst believed to be accurate are set out as a general outline only for guidance and do not constitute any part of an offer or contract. Intending purchasers should not rely on them as statements of representation of fact, but must satisfy themselves by inspection or otherwise as to their accuracy. No person in this firm's employment has the authority to make or give any representation or warranty in respect of the property.