

HJC

HIGHER VALUES



55 Balaclava Road

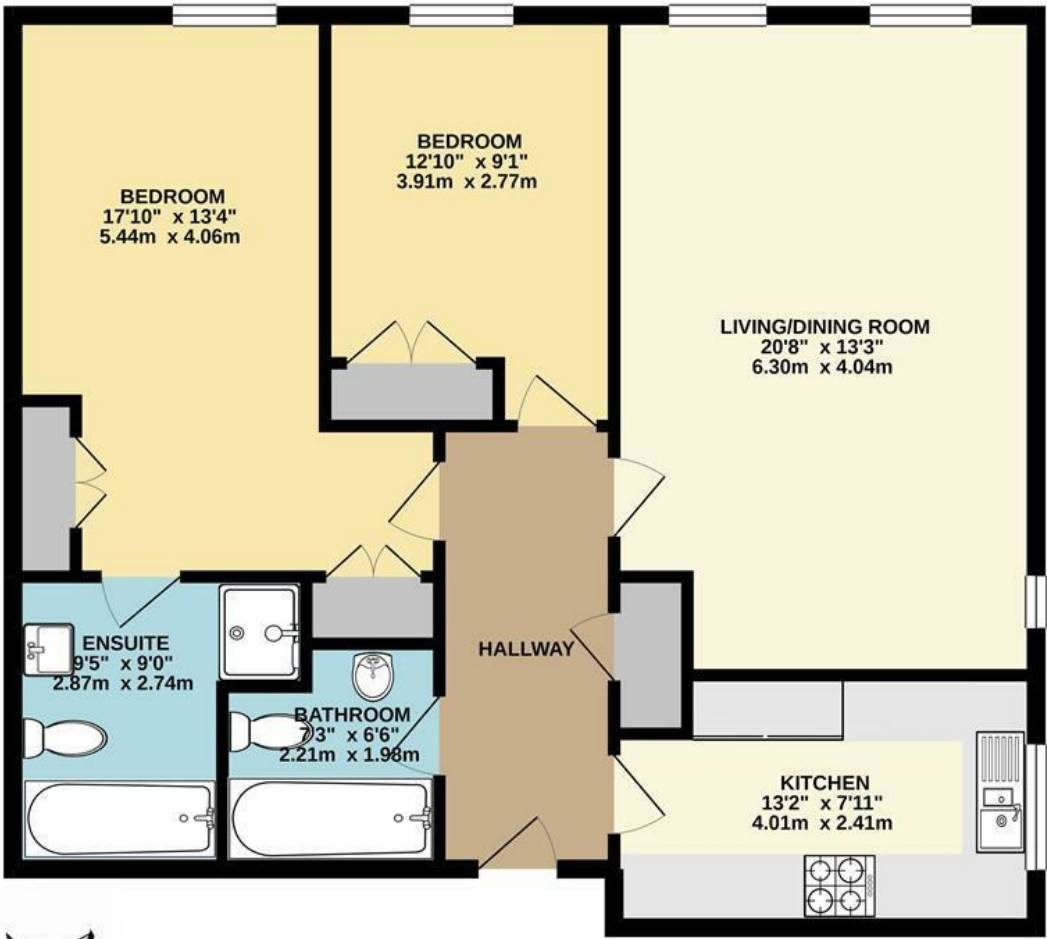
Surbiton, KT6 5RT

Guide Price £550,000

An extremely spacious two double bedroom, two bathroom, ground floor purpose built apartment forming part of the prestigious St James Park development. This great flat offers lots of natural light, generous room sizes and is in good decorative order throughout with a recently updated modern kitchen fitted. There is also allocated underground car parking, surrounded by lovely gardens and positioned opposite Victoria Park. The property is located within a short walk of Surbiton town centre and main line station. Council Tax Band E.

- Purpose Built St James Development
- Bright and Spacious Apartment
- Two Bathrooms
- Stunning Fitted Kitchen
- Close to Surbiton Station and Town Centre
- Ground Floor
- Two Double Bedrooms
- Large Reception / Dining Room
- Allocated Secure Underground Parking
- No Onward Chain

Floor Plan



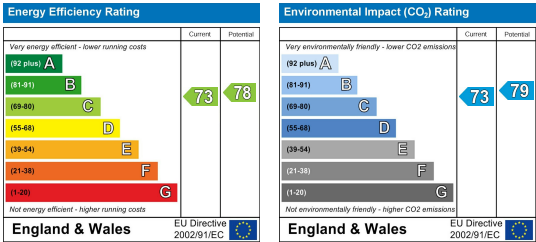
GROUND FLOOR FLAT

BALACLAVA ROAD, SURBITON

INTERNAL FLOOR AREA (APPROX.) 885 sq ft/ 82.1 sq m

Whilst every attempt has been made to ensure the accuracy of this floor plan, measurement of doors, windows, rooms and any other items are approximate and no responsibility is taken for any error, omission or mis-statement. Made with Metropix © 2025.

Energy Efficiency Graph



These particulars, whilst believed to be accurate are set out as a general outline only for guidance and do not constitute any part of an offer or contract. Intending purchasers should not rely on them as statements of representation of fact, but must satisfy themselves by inspection or otherwise as to their accuracy. No person in this firms employment has the authority to make or give any representation or warranty in respect of the property.