

HJC

HIGHER VALUES



Tolworth Road

Surbiton, KT6 7SZ

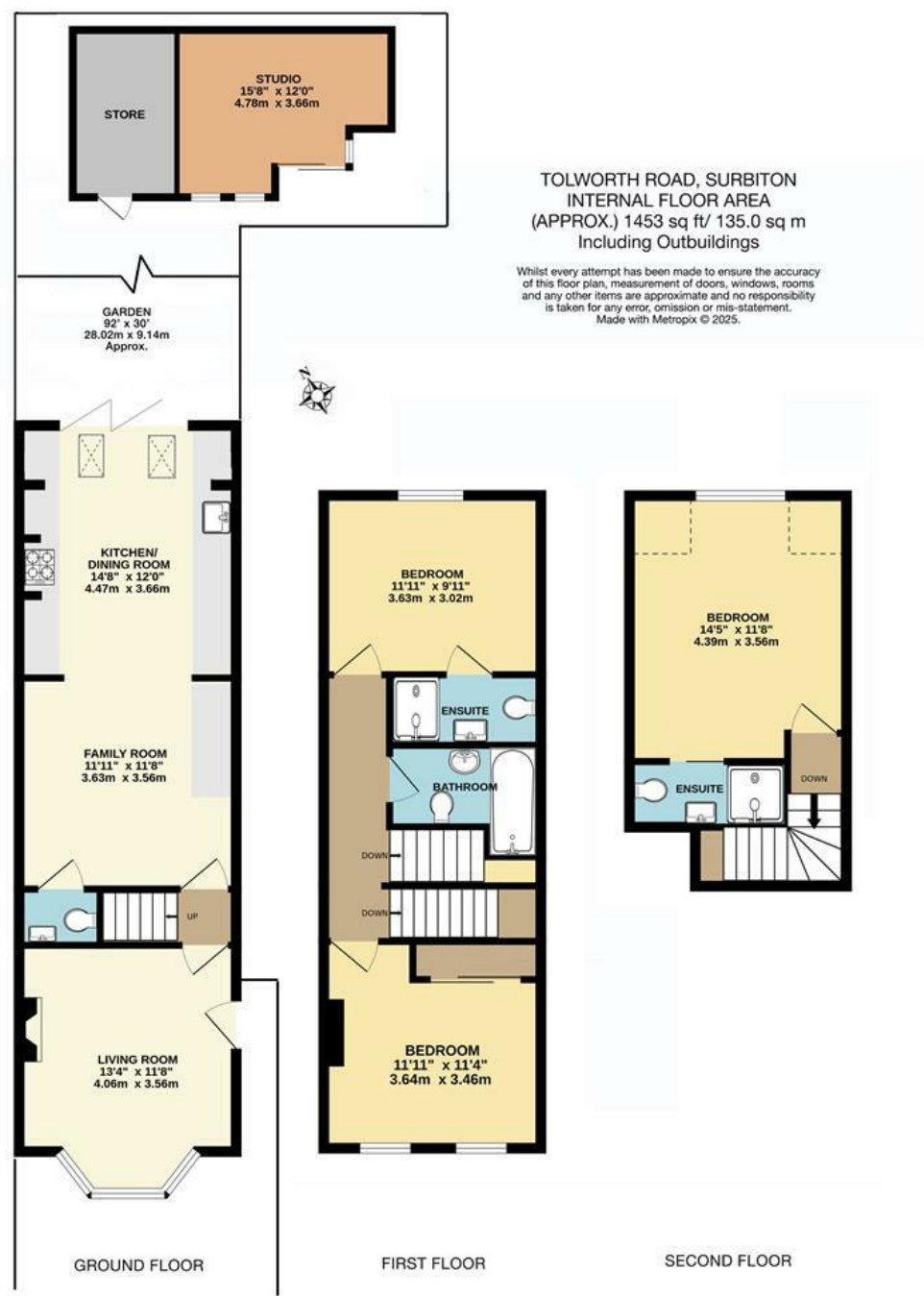
Guide Price £715,000

A stunning renovated three double bedroom period property in Surbiton. This property has been fully renovated to create a sizeable family home offering a reception room to the front leading onto a large kitchen and dining / family room with W/C and bi-fold doors opening out onto the rear garden with garden cabin with power and A/C. The first floor offers a double bedroom with built in storage, a luxury family bathroom and second double bedroom with ensuite. Located on the second floor is the primary double bedroom with ensuite. The property is situated in a popular residential location close to Surbiton town centre, mainline train station along with the vast array of local amenities. Offered to market with no onward chain and 10 year guarantee from Build Zone.

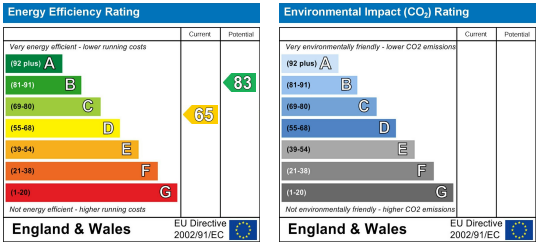
Material Info: Brick Walls & Roof Slates. Water / Electricity / Sewerage: Mains. Heating: Gas Mains.

- Charming Period Property
- Fully Renovated
- Large Kitchen / Dining Room
- Two Ensuited and Family Bathroom
- Chain Free
- Semi-Detached
- Garden Cabin
- Three Double Bedrooms
- 10 Year Guarantee from Build Zone
- Close to Local Amenities and Transport Links

Floor Plan



Energy Efficiency Graph



These particulars, whilst believed to be accurate are set out as a general outline only for guidance and do not constitute any part of an offer or contract. Intending purchasers should not rely on them as statements of representation of fact, but must satisfy themselves by inspection or otherwise as to their accuracy. No person in this firms employment has the authority to make or give any representation or warranty in respect of the property.