

# HJC

HIGHER VALUES



## Tolworth Road

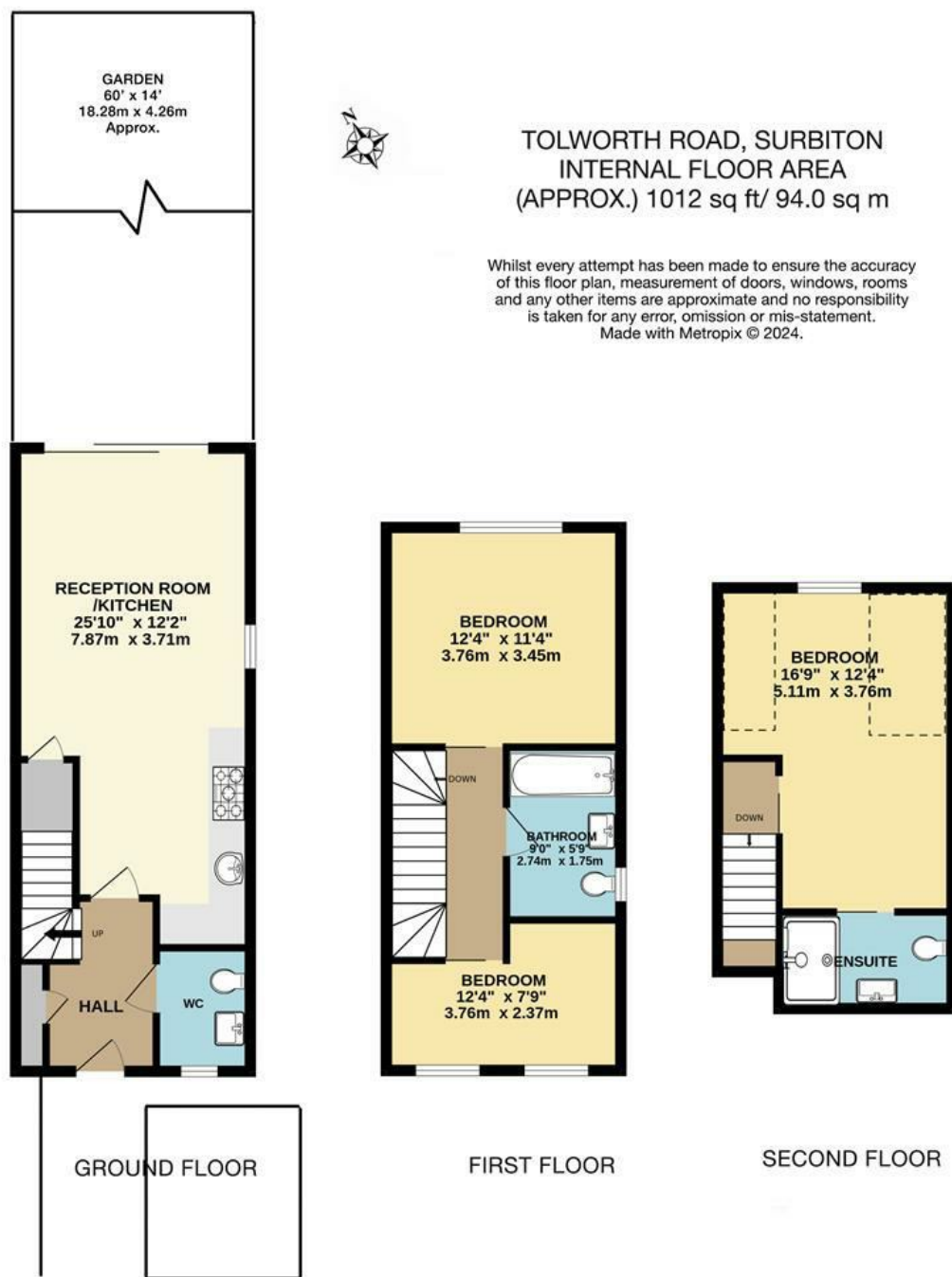
Surbiton, KT6 7SZ

Guide Price £699,950

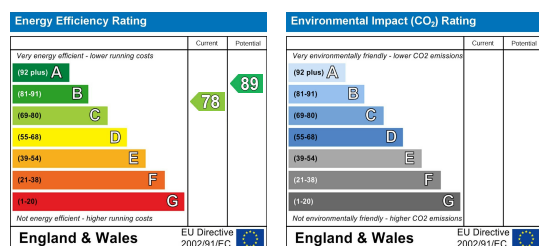
A brilliant 3 bedroom family home in a popular residential location. This new build property has been finished to a high standard and offers the ideal family set up. Downstairs there is a wonderful open plan kitchen / living / dining room with sliding glass doors opening onto the rear garden. The first floor offers 2 bedrooms and a lovely family bathroom with a third bedroom with ensuite located on the 2nd floor. Further benefits include off-street parking and EV charging point and A/C, Nu-Heat heat pump system and a 10 year warranty. A viewing is strongly recommended.

- New Build With 10 Year Warranty
- Three Bedrooms
- Open Plan Kitchen / Living / Dining Room
- EV Charging Point
- Close to Local Amenities
- Semi-Detached
- Two Bathrooms
- Off Street Parking
- Large Garden
- Close to Local Transport Links

## Floor Plan



## Energy Efficiency Graph



These particulars, whilst believed to be accurate are set out as a general outline only for guidance and do not constitute any part of an offer or contract. Intending purchasers should not rely on them as statements of representation of fact, but must satisfy themselves by inspection or otherwise as to their accuracy. No person in this firm's employment has the authority to make or give any representation or warranty in respect of the property.