

# HJC

HIGHER VALUES



## Fullers Way North

Surbiton, KT6 7LH

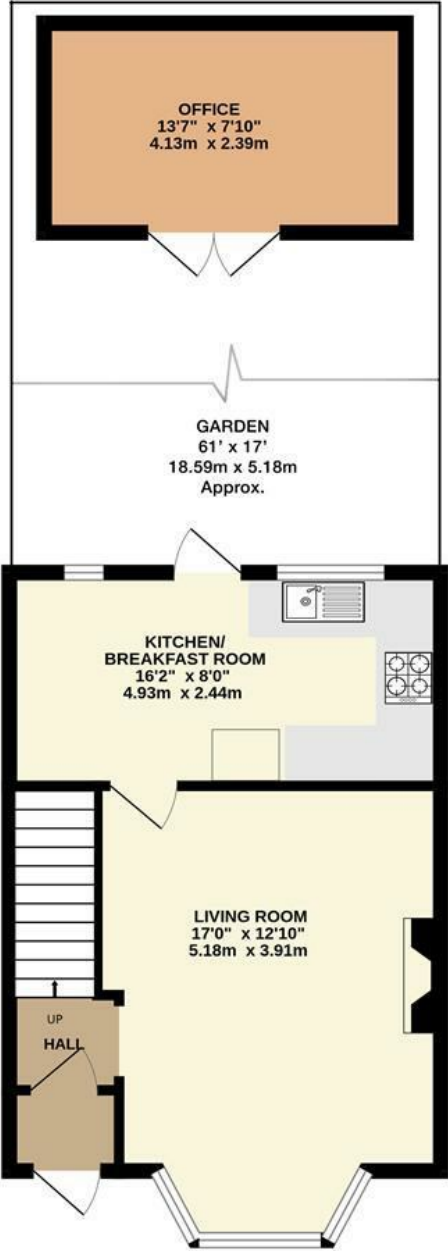
Guide Price £525,000

A pretty and beautifully presented two double bedroom end of terrace house with off street parking. This wonderful house offers a spacious living / dining room complete with log burner and bay window. The generously proportioned kitchen with its tiled floor opens onto a pretty garden with a home office located to the rear and useful side access. The recently updated hard wood stairs lead up to two double bedrooms and a family bathroom. This is an ideal first home and a viewing is highly recommended. Council Tax Band D.

Material Info: Brick Walls & Roof Slate Tiles. Water / Electricity / Sewerage: Mains. Heating: Gas Mains. Broadband: Fibre Mobile Coverage Indoor Likely Outdoor Likely.

- End of Terrace House
- Family Bathroom
- Garden
- Side Access
- New Boiler
- Two Double Bedrooms
- Generous Reception Room with Log Burner
- Garden Studio / Office
- Off-Street Parking
- Close to Transport Links and Local Schools

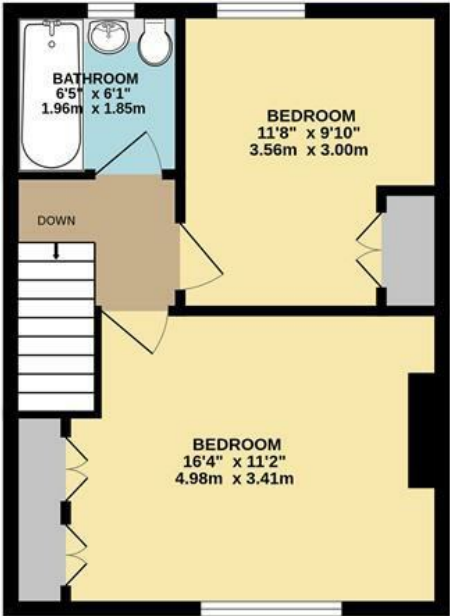
Floor Plan



GROUND FLOOR

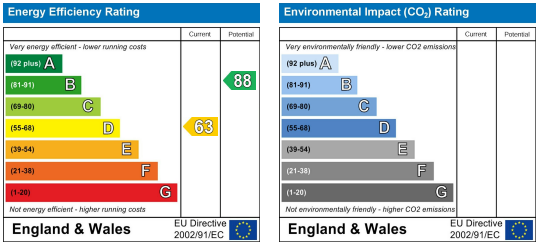
FULLERS WAY NORTH, SURBITON  
INTERNAL FLOOR AREA  
(APPROX.) 765 sq ft/ 71.0 sq m  
Excluding Exterior Office

Whilst every attempt has been made to ensure the accuracy of this floor plan, measurement of doors, windows, rooms and any other items are approximate and no responsibility is taken for any error, omission or mis-statement. Made with Metropix © 2025.



FIRST FLOOR

Energy Efficiency Graph



These particulars, whilst believed to be accurate are set out as a general outline only for guidance and do not constitute any part of an offer or contract. Intending purchasers should not rely on them as statements of representation of fact, but must satisfy themselves by inspection or otherwise as to their accuracy. No person in this firm's employment has the authority to make or give any representation or warranty in respect of the property.