

HJC

HIGHER VALUES



Effingham Road

Surbiton, KT6 5JY

Guide Price

£1,595,000

An imposing and charming 5 bedroom detached character home close to Surbiton town centre. This wonderful family home offers charming period features alongside generous room sizes to create an ideal family home. The accommodation upon entering offers two large reception rooms, a sizeable kitchen / breakfast room and W/C. Onto the first floor there are two double bedrooms, one with access to a large jack and jill bathroom and utility room. The second floor offers a further three double bedrooms and bathroom. The property benefits from off street parking whilst being located a short walk from Surbiton town centre, mainline train station, a plethora of local amenities and the River Thames. Elmbridge Borough Council Tax Band G.

Material Info: Water / Electricity / Sewerage: Mains. Heating: Gas Mains. Broadband: Fibre (FTTC). Mobile Coverage: Indoor: Likely Outdoor: Likely.

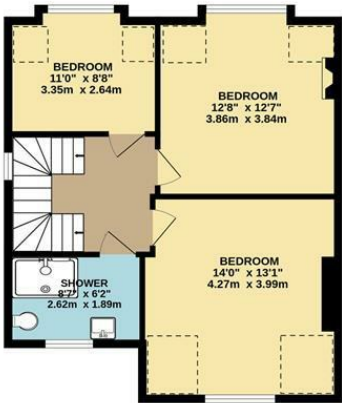
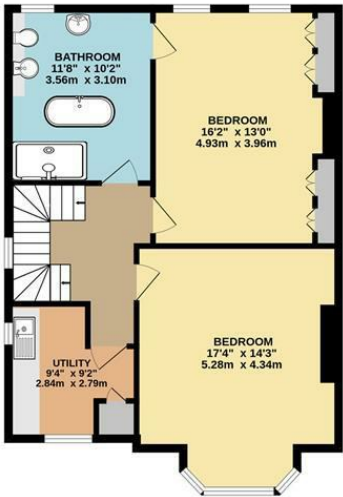
- Character property
- Five Double Bedrooms
- Utility Room
- Off Street Parking
- Close to Surbiton Town Centre
- Detached
- Two Bathrooms
- Generous Garden
- Potential to extend subject to the usual consents
- Chain Free

Floor Plan

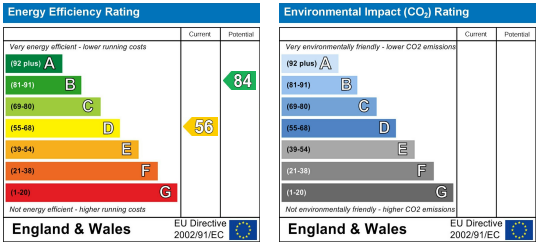


EFFINGHAM ROAD, SURBITON
INTERNAL FLOOR AREA
(APPROX.) 2228 sq ft/ 207.0 sq m

Whilst every attempt has been made to ensure the accuracy of this floor plan, measurement of doors, windows, rooms and any other items are approximate and no responsibility is taken for any error, omission or mis-statement.
Made with Metropix © 2024.



Energy Efficiency Graph



These particulars, whilst believed to be accurate are set out as a general outline only for guidance and do not constitute any part of an offer or contract. Intending purchasers should not rely on them as statements of representation of fact, but must satisfy themselves by inspection or otherwise as to their accuracy. No person in this firm's employment has the authority to make or give any representation or warranty in respect of the property.