

# HJC

HIGHER VALUES



## Savery Drive

Surbiton, KT6 5RJ

Guide Price

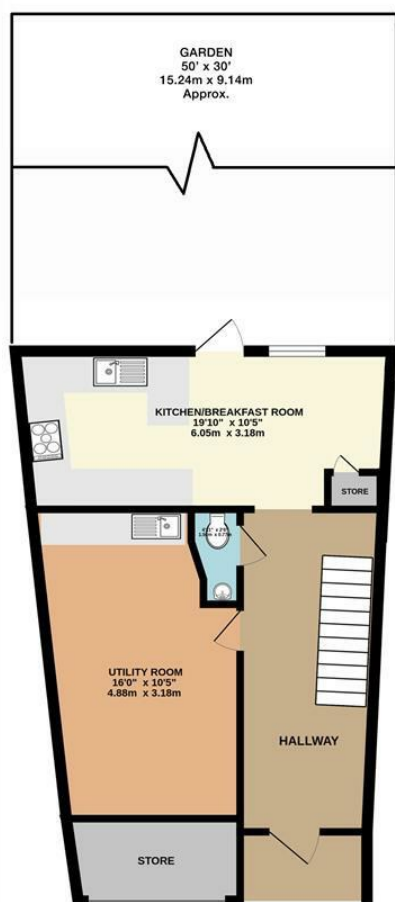
£1,050,000

An attractive larger townhouse situated on the end of St James prestigious development overlooking pretty communal gardens. The property downstairs offers a modern kitchen/breakfast room with wonderful views onto the pretty well-maintained southerly facing rear garden along with downstairs w/c and utility room. Onto the first floor there is large reception room with double doors opening onto the balcony and a double bedroom with ensuite. The second floor offers three further bedrooms one of which boasts an ensuite and family bathroom. There is also the benefit of off-street parking and offered to the market chain free. Elmbridge Borough Council Tax Band G.

Material Info: Brick Walls Water / Electricity / Sewerage: Mains. Heating: Gas Mains. Broadband: Fibre (FTTC). Mobile Coverage: Indoor: Likely Outdoor: Likely.

- St James Larger Townhouse
- Two Ensuites
- Reception Room with Balcony
- Pretty Southerly Facing Rear Garden
- Close to Surbiton Town Centre and Train Station
- 4 Double Bedrooms
- Family Bathroom
- Utility Room
- Off Street Parking
- Chain Free

## Floor Plan

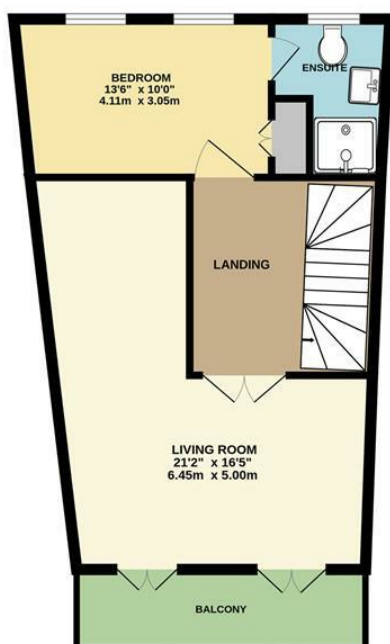


### GROUND FLOOR

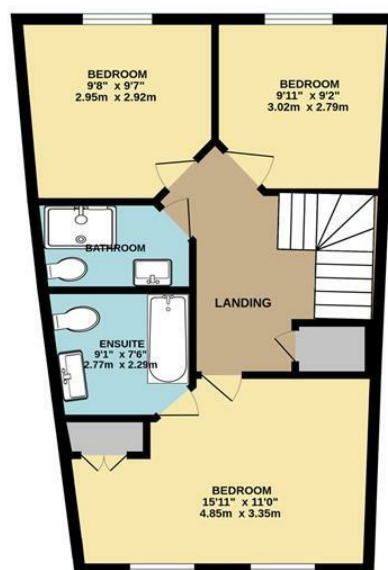


SAVERY DRIVE, LONG DITTON  
INTERNAL FLOOR AREA  
(APPROX.) 1680 sq ft/ 156.0 sq m

Whilst every attempt has been made to ensure the accuracy of this floor plan, measurement of doors, windows, rooms and any other items are approximate and no responsibility is taken for any error, omission or mis-statement.  
Made with Metropix © 2024.

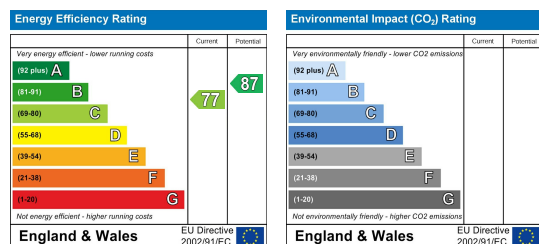


FIRST FLOOR



## SECOND FLOOR

## Energy Efficiency Graph



These particulars, whilst believed to be accurate are set out as a general outline only for guidance and do not constitute any part of an offer or contract. Intending purchasers should not rely on them as statements of representation of fact, but must satisfy themselves by inspection or otherwise as to their accuracy. No person in this firm's employment has the authority to make or give any representation or warranty in respect of the property.